

## 試驗報告

## Test Report

號碼(No.) : KA/2018/91854 日期(Date) : 2018/10/03

頁數 (Page) : 1 of 7

台灣塑膠工業股份有限公司  
FORMOSA PLASTICS CORPORATION

高雄市仁武區水管路100號

NO. 100, SHUI-GUAN RD., JEN-WU DIST., KAOHSIUNG CITY, TAIWAN (R. O. C.)

以下測試樣品係由申請廠商所提供及確認 (The following sample(s) was/were submitted and identified by/on behalf of the applicant as) :

樣品名稱(Sample Description) : 碳纖維短纖(CARBON FIBER CHOPPED STRAND)  
樣品型號(Style/Item No.) : CS-2516  
收件日期(Sample Receiving Date) : 2018/9/27  
測試期間(Testing Period) : 2018/9/27 TO 2018/10/03  
送樣廠商(Sample Submitted By) : 台灣塑膠工業股份有限公司 (FORMOSA PLASTICS CORPORATION)

測試需求(Test Requested) : 依據客戶指定, 參考RoHS 2011/65/EU Annex II及其修訂指令(EU) 2015/863測試鎘、鉛、汞、六價鉻、多溴聯苯、多溴聯苯醚, DBP, BBP, DEHP, DIBP. (As specified by client, with reference to RoHS 2011/65/EU Annex II and amending Directive (EU) 2015/863 to determine Cadmium, Lead, Mercury, Cr(VI), PBBs, PBDEs, DBP, BBP, DEHP, DIBP contents in the submitted sample(s).)

測試方法(Test Method) : 請參閱下一頁 (Please refer to following pages).

測試結果(Test Results) : 請參閱下一頁 (Please refer to following pages).

結論(Conclusion) : 根據客戶所提供的樣品, 其鎘、鉛、汞、六價鉻、多溴聯苯、多溴聯苯醚, DBP, BBP, DEHP, DIBP的測試結果符合RoHS指令暨(EU) 2015/863之限值要求. (Based on the performed tests on submitted sample(s), the test results of Cadmium, Lead, Mercury, Cr(VI), PBBs, PBDEs, DBP, BBP, DEHP, DIBP comply with the limits as set by RoHS and amending Directive (EU) 2015/863.)

*Ray Chang*

報告簽署人/Ray Chang, Ph.D./Manager-Tech

Signed for and on behalf of

SGS Taiwan Limited



# 試驗報告

號碼(No.) : KA/2018/91854 日期(Date) : 2018/10/03

頁數 (Page) : 2 of 7

# Test Report

台灣塑膠工業股份有限公司  
FORMOSA PLASTICS CORPORATION

高雄市仁武區水管路100號  
NO. 100, SHUI-GUAN RD., JEN-WU DIST., KAOHSIUNG CITY, TAIWAN (R. O. C.)

## 測試結果(Test Results)

測試部位(PART NAME)No. 1 : 黑色碳纖維 (BLACK CARBON FIBER)

測試項目 (Test Items)	單位 (Unit)	測試方法 (Method)	方法偵測 極限值 (MDL)	結果 (Result)	限值 (Limit)
				No. 1	
鎘 / Cadmium (Cd)	mg/kg	參考 IEC 62321-5: 2013 方法, 以感應耦合電漿原子發射光譜儀檢測. / With reference to IEC 62321-5: 2013 and performed by ICP-AES.	2	n. d.	100
鉛 / Lead (Pb)	mg/kg	參考 IEC 62321-5: 2013 方法, 以感應耦合電漿原子發射光譜儀檢測. / With reference to IEC 62321-5: 2013 and performed by ICP-AES.	2	n. d.	1000
汞 / Mercury (Hg)	mg/kg	參考 IEC 62321-4: 2013 方法, 以感應耦合電漿原子發射光譜儀檢測. / With reference to IEC 62321-4: 2013 and performed by ICP-AES.	2	n. d.	1000
六價鉻 / Hexavalent Chromium Cr(VI)	mg/kg	參考 IEC 62321-7-2:2017, 以 UV-VIS 檢測. / With reference to IEC 62321-7-2:2017 and performed by UV-VIS.	8	n. d.	1000
<b>多溴聯苯總和 / Sum of PBBs</b>	mg/kg	參考 IEC 62321-6: 2015 方法, 以氣相層析/質譜儀檢測. / With reference to IEC 62321-6: 2015 and performed by GC/MS.	-	n. d.	1000
一溴聯苯 / Monobromobiphenyl			5	n. d.	-
二溴聯苯 / Dibromobiphenyl			5	n. d.	-
三溴聯苯 / Tribromobiphenyl			5	n. d.	-
四溴聯苯 / Tetrabromobiphenyl			5	n. d.	-
五溴聯苯 / Pentabromobiphenyl			5	n. d.	-
六溴聯苯 / Hexabromobiphenyl			5	n. d.	-
七溴聯苯 / Heptabromobiphenyl			5	n. d.	-
八溴聯苯 / Octabromobiphenyl			5	n. d.	-
九溴聯苯 / Nonabromobiphenyl			5	n. d.	-
十溴聯苯 / Decabromobiphenyl	5	n. d.	-		

Unless otherwise stated the results shown in this test report refer only to the sample(s) tested. This test report cannot be reproduced, except in full, without prior written permission of the Company. 除非另有說明, 此報告結果僅對測試之樣品負責。本報告未經本公司書面許可, 不可部分複製。  
This document is issued by the Company subject to its General Conditions of Service printed overleaf, available on request or accessible at [www.sgs.com/terms\\_and\\_conditions.htm](http://www.sgs.com/terms_and_conditions.htm) and, for electronic format documents, subject to Terms and Conditions for Electronic Documents at [www.sgs.com/terms\\_e-document.htm](http://www.sgs.com/terms_e-document.htm). Attention is drawn to the limitation of liability, indemnification and jurisdiction issues defined therein. Any holder of this document is advised that information contained hereon reflects the Company's findings at the time of its intervention only and within the limits of Client's instructions, if any. The Company's sole responsibility is to its Client and this document does not exonerate parties to a transaction from exercising all their rights and obligations under the transaction documents. This document cannot be reproduced except in full, without prior written approval of the Company. Any unauthorized alteration, forgery or falsification of the content or appearance of this document is unlawful and offenders may be prosecuted to the fullest extent of the law.

# 試驗報告

號碼(No.) : KA/2018/91854 日期(Date) : 2018/10/03

頁數 (Page) : 3 of 7

## Test Report

台灣塑膠工業股份有限公司

FORMOSA PLASTICS CORPORATION

高雄市仁武區水管路100號

NO. 100, SHUI-GUAN RD., JEN-WU DIST., KAOHSIUNG CITY, TAIWAN (R. O. C.)

測試項目 (Test Items)	單位 (Unit)	測試方法 (Method)	方法偵測 極限值 (MDL)	結果 (Result) No. 1	限值 (Limit)
多溴聯苯醚總和 / Sum of PBDEs	mg/kg	參考IEC 62321-6: 2015方法, 以氣相層析/質譜儀檢測. / With reference to IEC 62321-6: 2015 and performed by GC/MS.	-	n. d.	1000
一溴聯苯醚 / Monobromodiphenyl ether			5	n. d.	-
二溴聯苯醚 / Dibromodiphenyl ether			5	n. d.	-
三溴聯苯醚 / Tribromodiphenyl ether			5	n. d.	-
四溴聯苯醚 / Tetrabromodiphenyl ether			5	n. d.	-
五溴聯苯醚 / Pentabromodiphenyl ether			5	n. d.	-
六溴聯苯醚 / Hexabromodiphenyl ether			5	n. d.	-
七溴聯苯醚 / Heptabromodiphenyl ether			5	n. d.	-
八溴聯苯醚 / Octabromodiphenyl ether			5	n. d.	-
九溴聯苯醚 / Nonabromodiphenyl ether			5	n. d.	-
十溴聯苯醚 / Decabromodiphenyl ether	5	n. d.	-		
鄰苯二甲酸二異丁酯 / DIBP (Di-isobutyl phthalate) (CAS No. : 84-69-5)	mg/kg	參考IEC 62321-8:2017, 以氣相層析儀/質譜儀檢測. / With reference to IEC 62321-8:2017. Analysis was performed by GC/MS.	50	n. d.	1000
鄰苯二甲酸二丁酯 / DBP (Dibutyl phthalate) (CAS No. : 84-74-2)	mg/kg		50	n. d.	1000
鄰苯二甲酸丁苯甲酯 / BBP (Butyl Benzyl phthalate) (CAS No. : 85-68-7)	mg/kg		50	n. d.	1000
鄰苯二甲酸二(2-乙基己基)酯 / DEHP (Di-(2-ethylhexyl) phthalate) (CAS No. : 117-81-7)	mg/kg		50	n. d.	1000

### 備註(Note) :

1. mg/kg = ppm ; 0.1wt% = 1000ppm
2. n. d. = Not Detected (未檢出)
3. MDL = Method Detection Limit (方法偵測極限值)
4. "-" = Not Regulated (無規格值)

## 試驗報告

## Test Report

號碼(No.) : KA/2018/91854 日期(Date) : 2018/10/03

頁數 (Page) : 4 of 7

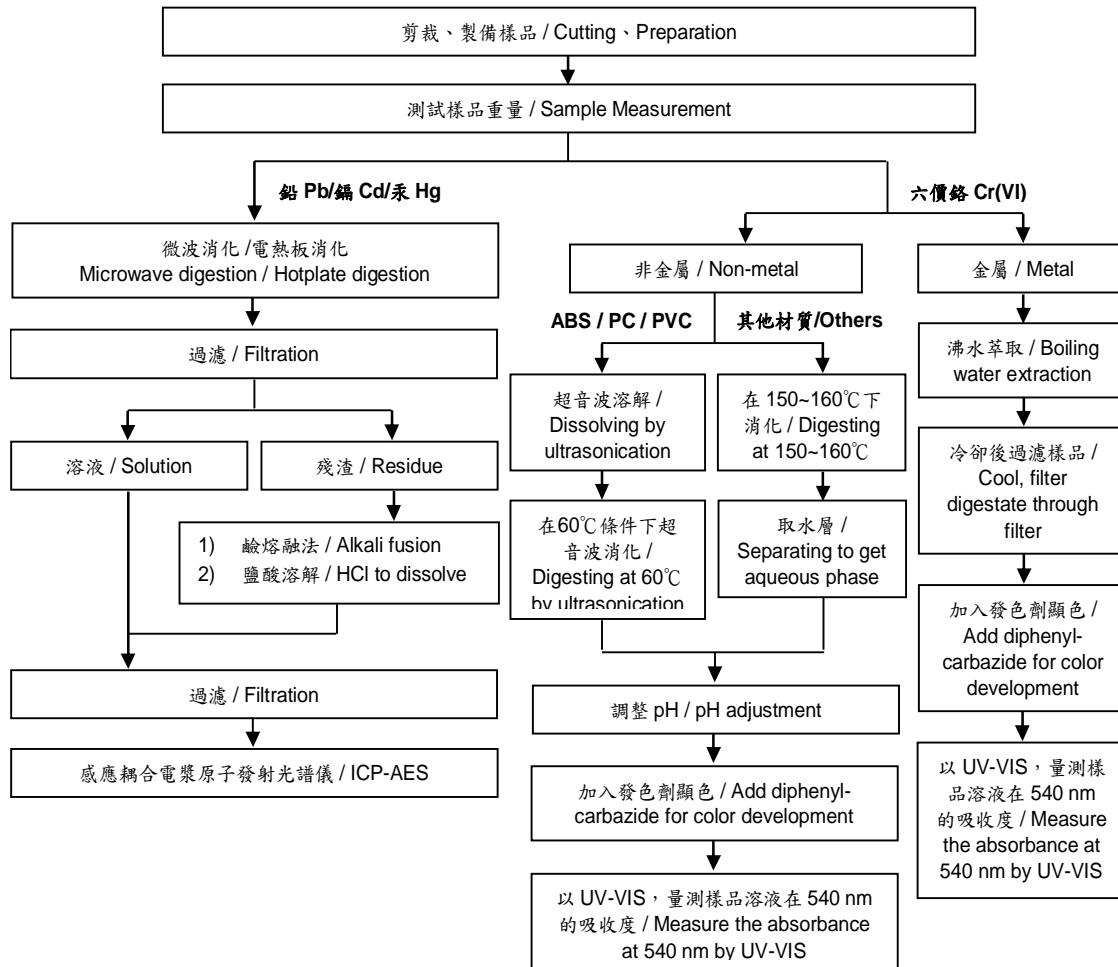
台灣塑膠工業股份有限公司  
FORMOSA PLASTICS CORPORATION  
高雄市仁武區水管路100號  
NO. 100, SHUI-GUAN RD., JEN-WU DIST., KAOHSIUNG CITY, TAIWAN (R. O. C.)

### 重金屬流程圖 / Analytical flow chart of Heavy Metal

根據以下的流程圖之條件，樣品已完全溶解。(六價鉻測試方法除外)

These samples were dissolved totally by pre-conditioning method according to below flow chart. (Cr<sup>6+</sup> test method excluded)

- 測試人員：劉俊宏 / Technician : Jony Liu
- 測試負責人：張伯睿 / Supervisor: Ray Chang



Unless otherwise stated the results shown in this test report refer only to the sample(s) tested. This test report cannot be reproduced, except in full, without prior written permission of the Company. 除非另有說明，此報告結果僅對測試之樣品負責。本報告未經本公司書面許可，不可部分複製。 This document is issued by the Company subject to its General Conditions of Service printed overleaf, available on request or accessible at [www.sgs.com/terms\\_and\\_conditions.htm](http://www.sgs.com/terms_and_conditions.htm) and, for electronic format documents, subject to Terms and Conditions for Electronic Documents at [www.sgs.com/terms\\_e-document.htm](http://www.sgs.com/terms_e-document.htm). Attention is drawn to the limitation of liability, indemnification and jurisdiction issues defined therein. Any holder of this document is advised that information contained hereon reflects the Company's findings at the time of its intervention only and within the limits of Client's instructions, if any. The Company's sole responsibility is to its Client and this document does not exonerate parties to a transaction from exercising all their rights and obligations under the transaction documents. This document cannot be reproduced in full, without prior written approval of the Company. Any unauthorized alteration, forgery or falsification of the content or appearance of this document is unlawful and offenders may be prosecuted to the fullest extent of the law.

## 試驗報告

## Test Report

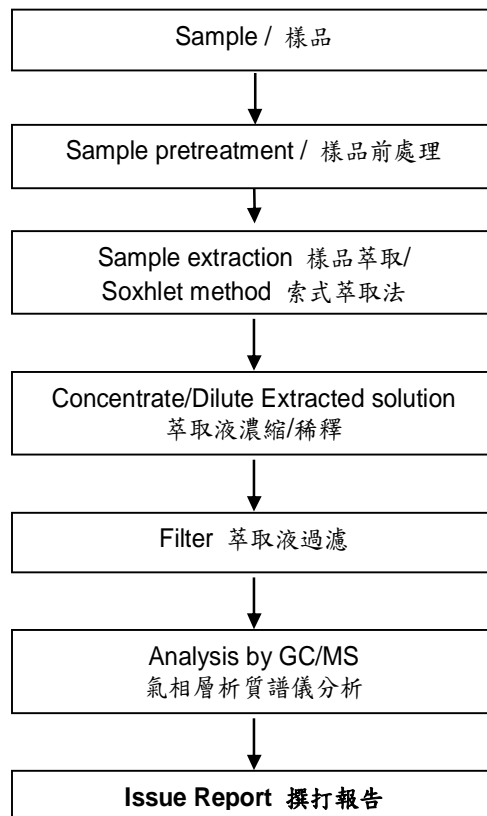
號碼(No.) : KA/2018/91854 日期(Date) : 2018/10/03

頁數 (Page) : 5 of 7

台灣塑膠工業股份有限公司  
FORMOSA PLASTICS CORPORATION  
高雄市仁武區水管路100號  
NO. 100, SHUI-GUAN RD., JEN-WU DIST., KAOHSIUNG CITY, TAIWAN (R. O. C.)

### 多溴聯苯/多溴聯苯醚 分析流程圖 / PBB/PBDE analytical FLOW CHART

- 測試人員：陳威錚 / Technician : Dorothy Chen
- 測試負責人：張伯睿 / Supervisor: Ray Chang



Unless otherwise stated the results shown in this test report refer only to the sample(s) tested. This test report cannot be reproduced, except in full, without prior written permission of the Company. 除非另有說明，此報告結果僅對測試之樣品負責。本報告未經本公司書面許可，不可部分複製。  
This document is issued by the Company subject to its General Conditions of Service printed overleaf, available on request or accessible at [www.sgs.com/terms\\_and\\_conditions.htm](http://www.sgs.com/terms_and_conditions.htm) and, for electronic format documents, subject to Terms and Conditions for Electronic Documents at [www.sgs.com/terms\\_e-document.htm](http://www.sgs.com/terms_e-document.htm). Attention is drawn to the limitation of liability, indemnification and jurisdiction issues defined therein. Any holder of this document is advised that information contained hereon reflects the Company's findings at the time of its intervention only and within the limits of Client's instructions, if any. The Company's sole responsibility is to its Client and this document does not exonerate parties to a transaction from exercising all their rights and obligations under the transaction documents. This document cannot be reproduced except in full, without prior written approval of the Company. Any unauthorized alteration, forgery or falsification of the content or appearance of this document is unlawful and offenders may be prosecuted to the fullest extent of the law.

## 試驗報告

## Test Report

號碼(No.) : KA/2018/91854 日期(Date) : 2018/10/03

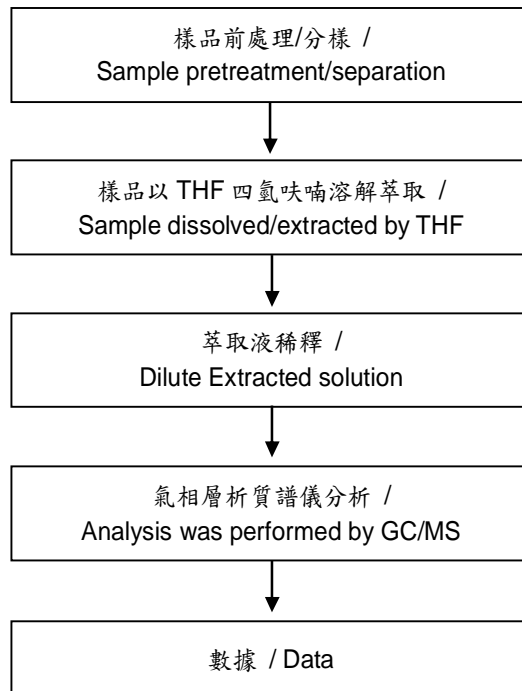
頁數 (Page) : 6 of 7

台灣塑膠工業股份有限公司  
FORMOSA PLASTICS CORPORATION  
高雄市仁武區水管路100號  
NO. 100, SHUI-GUAN RD., JEN-WU DIST., KAOHSIUNG CITY, TAIWAN (R. O. C.)

### 可塑劑分析流程圖 / Analytical flow chart of phthalate content

- 測試人員：陳威錚 / Technician : Dorothy Chen
- 測試負責人：張伯睿 / Supervisor: Ray Chang

#### 【測試方法/Test method: IEC 62321-8】



Unless otherwise stated the results shown in this test report refer only to the sample(s) tested. This test report cannot be reproduced, except in full, without prior written permission of the Company. 除非另有說明，此報告結果僅對測試之樣品負責。本報告未經本公司書面許可，不可部分複製。  
This document is issued by the Company subject to its General Conditions of Service printed overleaf, available on request or accessible at [www.sgs.com/terms\\_and\\_conditions.htm](http://www.sgs.com/terms_and_conditions.htm) and, for electronic format documents, subject to Terms and Conditions for Electronic Documents at [www.sgs.com/terms\\_e-document.htm](http://www.sgs.com/terms_e-document.htm). Attention is drawn to the limitation of liability, indemnification and jurisdiction issues defined therein. Any holder of this document is advised that information contained hereon reflects the Company's findings at the time of its intervention only and within the limits of Client's instructions, if any. The Company's sole responsibility is to its Client and this document does not exonerate parties to a transaction from exercising all their rights and obligations under the transaction documents. This document cannot be reproduced except in full, without prior written approval of the Company. Any unauthorized alteration, forgery or falsification of the content or appearance of this document is unlawful and offenders may be prosecuted to the fullest extent of the law.

## 試驗報告

## Test Report

號碼(No.) : KA/2018/91854 日期(Date) : 2018/10/03

頁數 (Page) : 7 of 7

台灣塑膠工業股份有限公司  
FORMOSA PLASTICS CORPORATION

高雄市仁武區水管路100號

NO. 100, SHUI-GUAN RD., JEN-WU DIST., KAOHSIUNG CITY, TAIWAN (R. O. C.)

\* 照片中如有箭頭標示，則表示為實際檢測之樣品/部位。\*  
(The tested sample / part is marked by an arrow if it's shown on the photo.)

# KA/2018/91854



\*\* 報告結尾 (End of Report) \*\*

Unless otherwise stated the results shown in this test report refer only to the sample(s) tested. This test report cannot be reproduced, except in full, without prior written permission of the Company. 除非另有說明，此報告結果僅對測試之樣品負責。本報告未經本公司書面許可，不可部分複製。  
This document is issued by the Company subject to its General Conditions of Service printed overleaf, available on request or accessible at [www.sgs.com/terms\\_and\\_conditions.htm](http://www.sgs.com/terms_and_conditions.htm) and, for electronic format documents, subject to Terms and Conditions for Electronic Documents at [www.sgs.com/terms\\_e-document.htm](http://www.sgs.com/terms_e-document.htm). Attention is drawn to the limitation of liability, indemnification and jurisdiction issues defined therein. Any holder of this document is advised that information contained hereon reflects the Company's findings at the time of its intervention only and within the limits of Client's instructions, if any. The Company's sole responsibility is to its Client and this document does not exonerate parties to a transaction from exercising all their rights and obligations under the transaction documents. This document cannot be reproduced except in full, without prior written approval of the Company. Any unauthorized alteration, forgery or falsification of the content or appearance of this document is unlawful and offenders may be prosecuted to the fullest extent of the law.