

## Test Report

No. : KA/2019/11488

Date : 2019/01/30

Page: 1 of 34

FORMOSA PLASTICS CORPORATION

NO. 100, SHUI-GUAN RD., JEN-WU DIST., KAOHSIUNG CITY, TAIWAN (R.O.C.)

### The following sample(s) was/were submitted and identified by/on behalf of the client as :

Sample Submitted By : FORMOSA PLASTICS CORPORATION  
Sample Description : IMPACT MODIFIER ADDITIVE  
Style/Item No. : M-31  
Sample Receiving Date : 2019/01/21  
Testing Period : 2019/01/21 to 2019/01/30

Test Requested : (1) As specified by client, with reference to RoHS 2011/65/EU Annex II and amending Directive (EU) 2015/863 to determine Cadmium, Lead, Mercury, Cr(VI), PBBs, PBDEs, DBP, BBP, DEHP, DIBP contents in the submitted sample(s).  
(2) Please refer to next pages for the other item(s).

Test Result(s) : Please refer to next page(s).

Ray Chang Ph.D. / Manager

Signed for and on behalf of

SGS Taiwan Limited

Chemical Laboratory-Kaohsiung



Unless otherwise stated the results shown in this test report refer only to the sample(s) tested. This test report cannot be reproduced, except in full, without prior written permission of the Company. 除非另有說明，此報告結果僅對測試之樣品負責。本報告未經本公司書面許可，不可部分複製。  
This document is issued by the Company subject to its General Conditions of Service printed overleaf, available on request or accessible at [www.sgs.com/terms\\_and\\_conditions.htm](http://www.sgs.com/terms_and_conditions.htm) and, for electronic format documents, subject to Terms and Conditions for Electronic Documents at [www.sgs.com/terms\\_e-document.htm](http://www.sgs.com/terms_e-document.htm). Attention is drawn to the limitation of liability, indemnification and jurisdiction issues defined therein. Any holder of this document is advised that information contained hereon reflects the Company's findings at the time of its intervention only and within the limits of Client's instructions, if any. The Company's sole responsibility is to its Client and this document does not exonerate parties to a transaction from exercising all their rights and obligations under the transaction documents. This document cannot be reproduced except in full, without prior written approval of the Company. Any unauthorized alteration, forgery or falsification of the content or appearance of this document is unlawful and offenders may be prosecuted to the fullest extent of the law.

# Test Report

No. : KA/2019/11488

Date : 2019/01/30

Page: 2 of 34

FORMOSA PLASTICS CORPORATION

NO. 100, SHUI-GUAN RD., JEN-WU DIST., KAOHSIUNG CITY, TAIWAN (R.O.C.)

## Test Result(s)

PART NAME NO.1 : WHITE POWDER

Test Item (s)	Unit	Method	MDL	Result
				No.1
Cadmium (Cd)	mg/kg	With reference to IEC 62321-5: 2013 and performed by ICP-AES.	2	n.d.
Lead (Pb)	mg/kg		2	n.d.
Mercury (Hg)	mg/kg		2	n.d.
Hexavalent Chromium Cr(VI)	mg/kg	With reference to IEC 62321-7-2:2017 and performed by UV-VIS.	8	n.d.
<b>Sum of PBBs</b>	mg/kg	With reference to IEC 62321-6:2015 and performed by GC/MS.	-	n.d.
Monobromobiphenyl	mg/kg		5	n.d.
Dibromobiphenyl	mg/kg		5	n.d.
Tribromobiphenyl	mg/kg		5	n.d.
Tetrabromobiphenyl	mg/kg		5	n.d.
Pentabromobiphenyl	mg/kg		5	n.d.
Hexabromobiphenyl	mg/kg		5	n.d.
Heptabromobiphenyl	mg/kg		5	n.d.
Octabromobiphenyl	mg/kg		5	n.d.
Nonabromobiphenyl	mg/kg		5	n.d.
Decabromobiphenyl	mg/kg		5	n.d.
<b>Sum of PBDEs</b>	mg/kg		-	n.d.
Monobromodiphenyl ether	mg/kg		5	n.d.
Dibromodiphenyl ether	mg/kg		5	n.d.
Tribromodiphenyl ether	mg/kg		5	n.d.
Tetrabromodiphenyl ether	mg/kg		5	n.d.
Pentabromodiphenyl ether	mg/kg		5	n.d.
Hexabromodiphenyl ether	mg/kg		5	n.d.
Heptabromodiphenyl ether	mg/kg		5	n.d.
Octabromodiphenyl ether	mg/kg		5	n.d.
Nonabromodiphenyl ether	mg/kg		5	n.d.
Decabromodiphenyl ether	mg/kg		5	n.d.
Polychlorinated Biphenyls (PCBs)	mg/kg	With reference to US EPA 3550C: 2007. Analysis was performed by GC/MS.	0.5	n.d.
Polychlorinated Naphthalene (PCNs)	mg/kg	With reference to US EPA 3550C: 2007. Analysis was performed by GC/MS.	5	n.d.

Unless otherwise stated the results shown in this test report refer only to the sample(s) tested. This test report cannot be reproduced, except in full, without prior written permission of the Company. 除非另有說明，此報告結果僅對測試之樣品負責。本報告未經本公司書面許可，不可部分複製。  
 This document is issued by the Company subject to its General Conditions of Service printed overleaf, available on request or accessible at [www.sgs.com/terms\\_and\\_conditions.htm](http://www.sgs.com/terms_and_conditions.htm) and, for electronic format documents, subject to Terms and Conditions for Electronic Documents at [www.sgs.com/terms\\_e-document.htm](http://www.sgs.com/terms_e-document.htm). Attention is drawn to the limitation of liability, indemnification and jurisdiction issues defined therein. Any holder of this document is advised that information contained hereon reflects the Company's findings at the time of its intervention only and within the limits of Client's instructions, if any. The Company's sole responsibility is to its Client and this document does not exonerate parties to a transaction from exercising all their rights and obligations under the transaction documents. This document cannot be reproduced except in full, without prior written approval of the Company. Any unauthorized alteration, forgery or falsification of the content or appearance of this document is unlawful and offenders may be prosecuted to the fullest extent of the law.

# Test Report

No. : KA/2019/11488

Date : 2019/01/30

Page: 3 of 34

FORMOSA PLASTICS CORPORATION

NO. 100, SHUI-GUAN RD., JEN-WU DIST., KAOHSIUNG CITY, TAIWAN (R.O.C.)

Test Item (s)	Unit	Method	MDL	Result
				No.1
Polychlorinated Terphenyls (PCTs)	mg/kg	With reference to US EPA 3550C: 2007. Analysis was performed by GC/MS.	0.5	n.d.
Alkanes, C10-13, chloro (Short Chain Chlorinated Paraffins) (CAS No.:85535-84-8)	%	With reference to US EPA 3550C: 2007. Analysis was performed by GC/ECD.	0.01	n.d.
Formaldehyde (CAS No.: 50-00-0)	mg/kg	With reference to ISO 17226-1. Analysis was performed by HPLC/DAD.	3	n.d.
PVC	**	Analysis was performed by FTIR and FLAME Test.	-	Negative
<b>Asbestos</b>				
Chrysotile (CAS No.: 12001-29-5)	%	With reference to EPA 600/R-93/116 (1993). Analysis was performed by Stereo Microscope (SM), Dispersion Staining Polarized Light Microscope (DS-PLM) and X-ray Diffraction Spectrometer (XRD).	-	Negative
Amosite (CAS No.: 12172-73-5)	%		-	Negative
Crocidolite (CAS No.: 12001-28-4)	%		-	Negative
Anthophyllite (CAS No.: 77536-67-5)	%		-	Negative
Tremolite (CAS No.: 77536-68-6)	%		-	Negative
Actinolite (CAS No.: 77536-66-4)	%		-	Negative
Tributyl Tin (TBT)	mg/kg	With reference to ISO 17353: 2004. Analysis was performed by GC/FPD.	0.03	n.d.
Triphenyl Tin (TphT)	mg/kg	With reference to ISO 17353: 2004. Analysis was performed by GC/FPD.	0.03	n.d.
Dibutyl Tin (DBT)	mg/kg	With reference to ISO 17353: 2004. Analysis was performed by GC/FPD.	0.03	n.d.
Diocetyl Tin (DOT)	mg/kg	With reference to ISO 17353: 2004. Analysis was performed by GC/FPD.	0.03	n.d.
<b>AZO</b>				
1): 4-AMINODIPHENYL (CAS No.: 92-67-1)	mg/kg	With reference to LFGB BVL B 82.02-2. Analysis was performed by GC/MS.	3	n.d.
2): BENZIDINE (CAS No.: 92-87-5)	mg/kg	With reference to LFGB BVL B 82.02-2. Analysis was performed by GC/MS.	3	n.d.
3): 4-CHLORO-O-TOLUIDINE (CAS No.: 95-69-2)	mg/kg	With reference to LFGB BVL B 82.02-2. Analysis was performed by GC/MS.	3	n.d.
4): 2-NAPHTHYLAMINE (CAS No.: 91-59-8)	mg/kg	With reference to LFGB BVL B 82.02-2. Analysis was performed by GC/MS.	3	n.d.
5): O-AMINOAZOTOLUENE (CAS No.: 97-56-3)	mg/kg	With reference to LFGB BVL B 82.02-2. Analysis was performed by GC/MS.	3	n.d.

Unless otherwise stated the results shown in this test report refer only to the sample(s) tested. This test report cannot be reproduced, except in full, without prior written permission of the Company. 除非另有說明，此報告結果僅對測試之樣品負責。本報告未經本公司書面許可，不可部分複製。  
 This document is issued by the Company subject to its General Conditions of Service printed overleaf, available on request or accessible at [www.sgs.com/terms\\_and\\_conditions.htm](http://www.sgs.com/terms_and_conditions.htm) and, for electronic format documents, subject to Terms and Conditions for Electronic Documents at [www.sgs.com/terms\\_e-document.htm](http://www.sgs.com/terms_e-document.htm). Attention is drawn to the limitation of liability, indemnification and jurisdiction issues defined therein. Any holder of this document is advised that information contained hereon reflects the Company's findings at the time of its intervention only and within the limits of Client's instructions, if any. The Company's sole responsibility is to its Client and this document does not exonerate parties to a transaction from exercising all their rights and obligations under the transaction documents. This document cannot be reproduced except in full, without prior written approval of the Company. Any unauthorized alteration, forgery or falsification of the content or appearance of this document is unlawful and offenders may be prosecuted to the fullest extent of the law.

# Test Report

No. : KA/2019/11488

Date : 2019/01/30

Page: 4 of 34

FORMOSA PLASTICS CORPORATION

NO. 100, SHUI-GUAN RD., JEN-WU DIST., KAOHSIUNG CITY, TAIWAN (R.O.C.)

Test Item (s)	Unit	Method	MDL	Result
				No.1
6): 2-AMINO-4-NITROTOLUENE (CAS No.: 99-55-8)	mg/kg	With reference to LFGB BVL B 82.02-2. Analysis was performed by GC/MS.	3	n.d.
7): P-CHLOROANILINE (CAS No.: 106-47-8)	mg/kg	With reference to LFGB BVL B 82.02-2. Analysis was performed by GC/MS.	3	n.d.
8): 2,4-DIAMINOANISOLE (CAS No.: 615-05-4)	mg/kg	With reference to LFGB BVL B 82.02-2. Analysis was performed by GC/MS.	3	n.d.
9): 4,4'-DIAMINODIPHENYLMETHANE (CAS No.: 101-77-9)	mg/kg	With reference to LFGB BVL B 82.02-2. Analysis was performed by GC/MS.	3	n.d.
10): 3,3'-DICHLOROBENZIDINE (CAS No.: 91-94-1)	mg/kg	With reference to LFGB BVL B 82.02-2. Analysis was performed by GC/MS.	3	n.d.
11): 3,3'-DIMETHOXYBENZIDINE (CAS No.: 119-90-4)	mg/kg	With reference to LFGB BVL B 82.02-2. Analysis was performed by GC/MS.	3	n.d.
12): 3,3'-DIMETHYLBENZIDINE (CAS No.: 119-93-7)	mg/kg	With reference to LFGB BVL B 82.02-2. Analysis was performed by GC/MS.	3	n.d.
13): 3,3'-DIMETHYL-4,4'-DIAMINODIPHENYLMETHANE (CAS No.: 838-88-0)	mg/kg	With reference to LFGB BVL B 82.02-2. Analysis was performed by GC/MS.	3	n.d.
14): P-CRESIDINE (2-METHOXY-5-METHYLANILINE) (CAS No.: 120-71-8)	mg/kg	With reference to LFGB BVL B 82.02-2. Analysis was performed by GC/MS.	3	n.d.
15): 4,4'-METHYLENE-BIS-(2-CHLOROANILINE) (CAS No.: 101-14-4)	mg/kg	With reference to LFGB BVL B 82.02-2. Analysis was performed by GC/MS.	3	n.d.
16): 4,4'-OXYDIANILINE (CAS No.: 101-80-4)	mg/kg	With reference to LFGB BVL B 82.02-2. Analysis was performed by GC/MS.	3	n.d.
17): 4,4'-THIODIANILINE (CAS No.: 139-65-1)	mg/kg	With reference to LFGB BVL B 82.02-2. Analysis was performed by GC/MS.	3	n.d.
18): O-TOLUIDINE (CAS No.: 95-53-4)	mg/kg	With reference to LFGB BVL B 82.02-2. Analysis was performed by GC/MS.	3	n.d.
19): 2,4-TOLUYLENEDIAMINE (CAS No.: 95-80-7)	mg/kg	With reference to LFGB BVL B 82.02-2. Analysis was performed by GC/MS.	3	n.d.
20): 2,4,5-TRIMETHYLANILINE (CAS No.: 137-17-7)	mg/kg	With reference to LFGB BVL B 82.02-2. Analysis was performed by GC/MS.	3	n.d.

Unless otherwise stated the results shown in this test report refer only to the sample(s) tested. This test report cannot be reproduced, except in full, without prior written permission of the Company. 除非另有說明，此報告結果僅對測試之樣品負責。本報告未經本公司書面許可，不可部分複製。  
 This document is issued by the Company subject to its General Conditions of Service printed overleaf, available on request or accessible at [www.sgs.com/terms\\_and\\_conditions.htm](http://www.sgs.com/terms_and_conditions.htm) and, for electronic format documents, subject to Terms and Conditions for Electronic Documents at [www.sgs.com/terms\\_e-document.htm](http://www.sgs.com/terms_e-document.htm). Attention is drawn to the limitation of liability, indemnification and jurisdiction issues defined therein. Any holder of this document is advised that information contained hereon reflects the Company's findings at the time of its intervention only and within the limits of Client's instructions, if any. The Company's sole responsibility is to its Client and this document does not exonerate parties to a transaction from exercising all their rights and obligations under the transaction documents. This document cannot be reproduced except in full, without prior written approval of the Company. Any unauthorized alteration, forgery or falsification of the content or appearance of this document is unlawful and offenders may be prosecuted to the fullest extent of the law.

# Test Report

No. : KA/2019/11488

Date : 2019/01/30

Page: 5 of 34

FORMOSA PLASTICS CORPORATION

NO. 100, SHUI-GUAN RD., JEN-WU DIST., KAOHSIUNG CITY, TAIWAN (R.O.C.)

Test Item (s)	Unit	Method	MDL	Result
				No.1
21): O-ANISIDINE (CAS No.: 90-04-0)	mg/kg	With reference to LFGB BVL B 82.02-2. Analysis was performed by GC/MS.	3	n.d.
22): P-AMINOAZOBENZENE (CAS No.: 60-09-3)	mg/kg	With reference to LFGB BVL B 82.02-2. Analysis was performed by GC/MS.	3	n.d.
23): 2,4-XYLIDINE (CAS No.: 95-68-1)	mg/kg	With reference to LFGB BVL B 82.02-2. Analysis was performed by GC/MS.	3	n.d.
24): 2,6-XYLIDINE (CAS No.: 87-62-7)	mg/kg	With reference to LFGB BVL B 82.02-2. Analysis was performed by GC/MS.	3	n.d.
Beryllium oxide (BeO)	mg/kg	Calculated from the result of Beryllium.	2 (▲)	n.d.
Beryllium (Be)	mg/kg	With reference to US EPA 3052: 1996. Analysis was performed by ICP-AES.	2	n.d.
PFOA (CAS No.: 335-67-1)	mg/kg	With reference to CEN/TS 15968 (2010). Analysis was performed by LC/MSMS.	0.01	n.d.
Perfluorooctane sulfonates (PFOS-Acid, Metal Salt, Amide)	mg/kg	With reference to CEN/TS 15968 (2010). Analysis was performed by LC/MSMS.	0.01	n.d.
2-(3,5-di-tert-butyl-2-hydroxyphenyl)-2H-benzotriazole (CAS No.: 3846-71-7)	mg/kg	With reference to US EPA 3550C: 2007. Analysis was performed by GC/MS.	5	n.d.
Cobalt dichloride (CAS No.: 7646-79-9)	mg/kg	SGS In-House method-RSTS-EE-SVHC-007. Analyzed by ICP-AES.	50	n.d.
<b>HFCs (Hydrofluorocarbon)</b>				
HFC-23 (CHF3)(CAS No.: 75-46-7)	mg/kg	With reference to US EPA 5021A. Analysis was performed by GC/MS.	1	n.d.
HFC-32 (CH2F2)(CAS No.: 75-10-5)	mg/kg	With reference to US EPA 5021A. Analysis was performed by GC/MS.	1	n.d.
HFC-41 (CH3F)(CAS No.: 593-53-3)	mg/kg	With reference to US EPA 5021A. Analysis was performed by GC/MS.	1	n.d.
HFC-43-10mee (C5H2F10)	mg/kg	With reference to US EPA 5021A. Analysis was performed by GC/MS.	1	n.d.
HFC-125 (C2HF5)	mg/kg	With reference to US EPA 5021A. Analysis was performed by GC/MS.	1	n.d.
HFC-134 (C2H2F4)	mg/kg	With reference to US EPA 5021A. Analysis was performed by GC/MS.	1	n.d.

Unless otherwise stated the results shown in this test report refer only to the sample(s) tested. This test report cannot be reproduced, except in full, without prior written permission of the Company. 除非另有說明，此報告結果僅對測試之樣品負責。本報告未經本公司書面許可，不可部分複製。  
 This document is issued by the Company subject to its General Conditions of Service printed overleaf, available on request or accessible at [www.sgs.com/terms\\_and\\_conditions.htm](http://www.sgs.com/terms_and_conditions.htm) and, for electronic format documents, subject to Terms and Conditions for Electronic Documents at [www.sgs.com/terms\\_e-document.htm](http://www.sgs.com/terms_e-document.htm). Attention is drawn to the limitation of liability, indemnification and jurisdiction issues defined therein. Any holder of this document is advised that information contained hereon reflects the Company's findings at the time of its intervention only and within the limits of Client's instructions, if any. The Company's sole responsibility is to its Client and this document does not exonerate parties to a transaction from exercising all their rights and obligations under the transaction documents. This document cannot be reproduced except in full, without prior written approval of the Company. Any unauthorized alteration, forgery or falsification of the content or appearance of this document is unlawful and offenders may be prosecuted to the fullest extent of the law.

# Test Report

No. : KA/2019/11488

Date : 2019/01/30

Page: 6 of 34

FORMOSA PLASTICS CORPORATION

NO. 100, SHUI-GUAN RD., JEN-WU DIST., KAOHSIUNG CITY, TAIWAN (R.O.C.)

Test Item (s)	Unit	Method	MDL	Result
				No.1
HFC-134a (CH <sub>2</sub> FCF <sub>3</sub> )(CAS No.: 811-97-2)	mg/kg	With reference to US EPA 5021A. Analysis was performed by GC/MS.	1	n.d.
HFC-143 (CH <sub>3</sub> F <sub>3</sub> )	mg/kg	With reference to US EPA 5021A. Analysis was performed by GC/MS.	1	n.d.
HFC-143a (CH <sub>3</sub> F <sub>3</sub> )	mg/kg	With reference to US EPA 5021A. Analysis was performed by GC/MS.	1	n.d.
HFC-152a (C <sub>2</sub> H <sub>4</sub> F <sub>2</sub> )(CAS No.: 75-37-6)	mg/kg	With reference to US EPA 5021A. Analysis was performed by GC/MS.	1	n.d.
HFC-227ea (C <sub>3</sub> HF <sub>7</sub> )(CAS No.: 431-89-0)	mg/kg	With reference to US EPA 5021A. Analysis was performed by GC/MS.	1	n.d.
HFC-236ea (C <sub>3</sub> H <sub>2</sub> F <sub>6</sub> )(CAS No.: 431-63-0)	mg/kg	With reference to US EPA 5021A. Analysis was performed by GC/MS.	1	n.d.
HFC-236fa (C <sub>3</sub> H <sub>2</sub> F <sub>6</sub> )	mg/kg	With reference to US EPA 5021A. Analysis was performed by GC/MS.	1	n.d.
HFC-245ca (C <sub>3</sub> H <sub>3</sub> F <sub>5</sub> )	mg/kg	With reference to US EPA 5021A. Analysis was performed by GC/MS.	1	n.d.
HFC-245fa (C <sub>3</sub> H <sub>3</sub> F <sub>5</sub> )	mg/kg	With reference to US EPA 5021A. Analysis was performed by GC/MS.	1	n.d.
HFC-365mfc (C <sub>4</sub> H <sub>5</sub> F <sub>5</sub> )	mg/kg	With reference to US EPA 5021A. Analysis was performed by GC/MS.	1	n.d.
<b>PFCs (Perfluorocarbon)</b>				
F14 (CAS No.: 75-73-0)	mg/kg	With reference to US EPA 5021A. Analysis was performed by GC/MS.	1	n.d.
Fluorocarbon 116 (CAS No.: 76-16-4)	mg/kg	With reference to US EPA 5021A. Analysis was performed by GC/MS.	1	n.d.
Freon 218 (CAS No.: 76-19-7)	mg/kg	With reference to US EPA 5021A. Analysis was performed by GC/MS.	1	n.d.
Decafluorobutane (CAS No.: 355-25-9)	mg/kg	With reference to US EPA 5021A. Analysis was performed by GC/MS.	1	n.d.
Freon C318 (CAS No.: 115-25-3)	mg/kg	With reference to US EPA 5021A. Analysis was performed by GC/MS.	1	n.d.
Perfluor-1-butene (CAS No.: 357-26-6)	mg/kg	With reference to US EPA 5021A. Analysis was performed by GC/MS.	1	n.d.

Unless otherwise stated the results shown in this test report refer only to the sample(s) tested. This test report cannot be reproduced, except in full, without prior written permission of the Company. 除非另有說明，此報告結果僅對測試之樣品負責。本報告未經本公司書面許可，不可部分複製。  
 This document is issued by the Company subject to its General Conditions of Service printed overleaf, available on request or accessible at [www.sgs.com/terms\\_and\\_conditions.htm](http://www.sgs.com/terms_and_conditions.htm) and, for electronic format documents, subject to Terms and Conditions for Electronic Documents at [www.sgs.com/terms\\_e-document.htm](http://www.sgs.com/terms_e-document.htm). Attention is drawn to the limitation of liability, indemnification and jurisdiction issues defined therein. Any holder of this document is advised that information contained hereon reflects the Company's findings at the time of its intervention only and within the limits of Client's instructions, if any. The Company's sole responsibility is to its Client and this document does not exonerate parties to a transaction from exercising all their rights and obligations under the transaction documents. This document cannot be reproduced except in full, without prior written approval of the Company. Any unauthorized alteration, forgery or falsification of the content or appearance of this document is unlawful and offenders may be prosecuted to the fullest extent of the law.



# Test Report

No. : KA/2019/11488

Date : 2019/01/30

Page: 7 of 34

FORMOSA PLASTICS CORPORATION

NO. 100, SHUI-GUAN RD., JEN-WU DIST., KAOHSIUNG CITY, TAIWAN (R.O.C.)

Test Item (s)	Unit	Method	MDL	Result
				No.1
perfluorisobutene (CAS No.: 382-21-8)	mg/kg	With reference to US EPA 5021A. Analysis was performed by GC/MS.	1	n.d.
1,4-dihydrooctafluorobutane (CAS No.: 377-36-6)	mg/kg	With reference to US EPA 5021A. Analysis was performed by GC/MS.	1	n.d.
Nonafluor-2- (trifluoromethyl) butane (CAS No.: 594-91-2)	mg/kg	With reference to US EPA 5021A. Analysis was performed by GC/MS.	1	n.d.
Perfluoro-n-pentane (CAS No.: 678-26-2)	mg/kg	With reference to US EPA 5021A. Analysis was performed by GC/MS.	1	n.d.
2-perfluoromethylpentane (CAS No.: 355-04-4)	mg/kg	With reference to US EPA 5021A. Analysis was performed by GC/MS.	1	n.d.
Perfluorohexane (CAS No.: 355-42-0)	mg/kg	With reference to US EPA 5021A. Analysis was performed by GC/MS.	1	n.d.
<b>CFC's (Chlorofluorocarbons)</b>				
<b>Group I</b>				
Chlorofluorocarbon-11 (CAS No.: 75-69-4)	mg/kg	With reference to US EPA 5021A. Analysis was performed by GC/MS.	1	n.d.
Chlorofluorocarbon-12 (CAS No.: 75-71-8)	mg/kg	With reference to US EPA 5021A. Analysis was performed by GC/MS.	1	n.d.
Chlorofluorocarbon-113 (CAS No.: 76-13-1)	mg/kg	With reference to US EPA 5021A. Analysis was performed by GC/MS.	1	n.d.
Chlorofluorocarbon-114 (CAS No.: 76-14-2)	mg/kg	With reference to US EPA 5021A. Analysis was performed by GC/MS.	1	n.d.
Chlorofluorocarbon-115 (CAS No.: 76-15-3)	mg/kg	With reference to US EPA 5021A. Analysis was performed by GC/MS.	1	n.d.
<b>Group III</b>				
Chlorofluorocarbon-13 (CAS No.: 75-72-9)	mg/kg	With reference to US EPA 5021A. Analysis was performed by GC/MS.	1	n.d.
Chlorofluorocarbon-111 (CAS No.: 354-56-3)	mg/kg	With reference to US EPA 5021A. Analysis was performed by GC/MS.	1	n.d.
Chlorofluorocarbon-112 (CAS No.: 76-12-0)	mg/kg	With reference to US EPA 5021A. Analysis was performed by GC/MS.	1	n.d.
Chlorofluorocarbon-211 (CAS No.: 422-78-6)	mg/kg	With reference to US EPA 5021A. Analysis was performed by GC/MS.	1	n.d.

Unless otherwise stated the results shown in this test report refer only to the sample(s) tested. This test report cannot be reproduced, except in full, without prior written permission of the Company. 除非另有說明，此報告結果僅對測試之樣品負責。本報告未經本公司書面許可，不可部分複製。  
 This document is issued by the Company subject to its General Conditions of Service printed overleaf, available on request or accessible at [www.sgs.com/terms\\_and\\_conditions.htm](http://www.sgs.com/terms_and_conditions.htm) and, for electronic format documents, subject to Terms and Conditions for Electronic Documents at [www.sgs.com/terms\\_e-document.htm](http://www.sgs.com/terms_e-document.htm). Attention is drawn to the limitation of liability, indemnification and jurisdiction issues defined therein. Any holder of this document is advised that information contained hereon reflects the Company's findings at the time of its intervention only and within the limits of Client's instructions, if any. The Company's sole responsibility is to its Client and this document does not exonerate parties to a transaction from exercising all their rights and obligations under the transaction documents. This document cannot be reproduced except in full, without prior written approval of the Company. Any unauthorized alteration, forgery or falsification of the content or appearance of this document is unlawful and offenders may be prosecuted to the fullest extent of the law.

# Test Report

No. : KA/2019/11488

Date : 2019/01/30

Page: 8 of 34

FORMOSA PLASTICS CORPORATION

NO. 100, SHUI-GUAN RD., JEN-WU DIST., KAOHSIUNG CITY, TAIWAN (R.O.C.)

Test Item (s)	Unit	Method	MDL	Result
				No.1
Chlorofluorocarbon-212 (CAS No.: 3182-26-1)	mg/kg	With reference to US EPA 5021A. Analysis was performed by GC/MS.	1	n.d.
Chlorofluorocarbon-213 (CAS No.: 2354-06-5)	mg/kg	With reference to US EPA 5021A. Analysis was performed by GC/MS.	1	n.d.
Chlorofluorocarbon-214 (CAS No.: 29255-31-0)	mg/kg	With reference to US EPA 5021A. Analysis was performed by GC/MS.	1	n.d.
Chlorofluorocarbon-215 (CAS No.: 4259-43-2)	mg/kg	With reference to US EPA 5021A. Analysis was performed by GC/MS.	1	n.d.
Chlorofluorocarbon-216 (CAS No.: 661-97-2)	mg/kg	With reference to US EPA 5021A. Analysis was performed by GC/MS.	1	n.d.
Chlorofluorocarbon-217 (CAS No.: 422-86-6)	mg/kg	With reference to US EPA 5021A. Analysis was performed by GC/MS.	1	n.d.
<b>HCFCs (Hydrochlorofluorocarbons)</b>				
HCFC-21 (CAS No.: 75-43-4)	mg/kg	With reference to US EPA 5021A. Analysis was performed by GC/MS.	1	n.d.
HCFC-22 (CAS No.: 75-45-6)	mg/kg	With reference to US EPA 5021A. Analysis was performed by GC/MS.	1	n.d.
HCFC-31 (CAS No.: 593-70-4)	mg/kg	With reference to US EPA 5021A. Analysis was performed by GC/MS.	1	n.d.
HCFC-121 (CAS No.: 354-14-3)	mg/kg	With reference to US EPA 5021A. Analysis was performed by GC/MS.	1	n.d.
HCFC-122 (CAS No.: 354-21-2)	mg/kg	With reference to US EPA 5021A. Analysis was performed by GC/MS.	1	n.d.
HCFC-123 (CAS No.: 306-83-2)	mg/kg	With reference to US EPA 5021A. Analysis was performed by GC/MS.	1	n.d.
HCFC-124 (CAS No.: 2837-89-0)	mg/kg	With reference to US EPA 5021A. Analysis was performed by GC/MS.	1	n.d.
HCFC-131 (CAS No.: 359-28-4)	mg/kg	With reference to US EPA 5021A. Analysis was performed by GC/MS.	1	n.d.
HCFC-132b (CAS No.: 1649-08-7)	mg/kg	With reference to US EPA 5021A. Analysis was performed by GC/MS.	1	n.d.

Unless otherwise stated the results shown in this test report refer only to the sample(s) tested. This test report cannot be reproduced, except in full, without prior written permission of the Company. 除非另有說明，此報告結果僅對測試之樣品負責。本報告未經本公司書面許可，不可部分複製。  
 This document is issued by the Company subject to its General Conditions of Service printed overleaf, available on request or accessible at [www.sgs.com/terms\\_and\\_conditions.htm](http://www.sgs.com/terms_and_conditions.htm) and, for electronic format documents, subject to Terms and Conditions for Electronic Documents at [www.sgs.com/terms\\_e-document.htm](http://www.sgs.com/terms_e-document.htm). Attention is drawn to the limitation of liability, indemnification and jurisdiction issues defined therein. Any holder of this document is advised that information contained hereon reflects the Company's findings at the time of its intervention only and within the limits of Client's instructions, if any. The Company's sole responsibility is to its Client and this document does not exonerate parties to a transaction from exercising all their rights and obligations under the transaction documents. This document cannot be reproduced except in full, without prior written approval of the Company. Any unauthorized alteration, forgery or falsification of the content or appearance of this document is unlawful and offenders may be prosecuted to the fullest extent of the law.



# Test Report

No. : KA/2019/11488

Date : 2019/01/30

Page: 9 of 34

FORMOSA PLASTICS CORPORATION

NO. 100, SHUI-GUAN RD., JEN-WU DIST., KAOHSIUNG CITY, TAIWAN (R.O.C.)

Test Item (s)	Unit	Method	MDL	Result
				No.1
HCFC-133a (CAS No.: 75-88-7)	mg/kg	With reference to US EPA 5021A. Analysis was performed by GC/MS.	1	n.d.
HCFC-141b (CAS No.: 1717-00-6)	mg/kg	With reference to US EPA 5021A. Analysis was performed by GC/MS.	1	n.d.
HCFC-142b (CAS No.: 75-68-3)	mg/kg	With reference to US EPA 5021A. Analysis was performed by GC/MS.	1	n.d.
HCFC-221 (CAS No.: 422-26-4)	mg/kg	With reference to US EPA 5021A. Analysis was performed by GC/MS.	1	n.d.
HCFC-222 (CAS No.: 422-49-1)	mg/kg	With reference to US EPA 5021A. Analysis was performed by GC/MS.	1	n.d.
HCFC-223 (CAS No.: 422-52-6)	mg/kg	With reference to US EPA 5021A. Analysis was performed by GC/MS.	1	n.d.
HCFC-224 (CAS No.: 422-54-8)	mg/kg	With reference to US EPA 5021A. Analysis was performed by GC/MS.	1	n.d.
HCFC-225ca (CAS No.: 422-56-0)	mg/kg	With reference to US EPA 5021A. Analysis was performed by GC/MS.	1	n.d.
HCFC-225cb (CAS No.: 507-55-1)	mg/kg	With reference to US EPA 5021A. Analysis was performed by GC/MS.	1	n.d.
HCFC-226 (CAS No.: 431-87-8)	mg/kg	With reference to US EPA 5021A. Analysis was performed by GC/MS.	1	n.d.
HCFC-231 (CAS No.: 421-94-3)	mg/kg	With reference to US EPA 5021A. Analysis was performed by GC/MS.	1	n.d.
HCFC-232 (CAS No.: 460-89-9)	mg/kg	With reference to US EPA 5021A. Analysis was performed by GC/MS.	1	n.d.
HCFC-233 (CAS No.: 7125-84-0)	mg/kg	With reference to US EPA 5021A. Analysis was performed by GC/MS.	1	n.d.
HCFC-234 (CAS No.: 425-94-5)	mg/kg	With reference to US EPA 5021A. Analysis was performed by GC/MS.	1	n.d.
HCFC-235 (CAS No.: 460-92-4)	mg/kg	With reference to US EPA 5021A. Analysis was performed by GC/MS.	1	n.d.
HCFC-241 (CAS No.: 666-27-3)	mg/kg	With reference to US EPA 5021A. Analysis was performed by GC/MS.	1	n.d.

Unless otherwise stated the results shown in this test report refer only to the sample(s) tested. This test report cannot be reproduced, except in full, without prior written permission of the Company. 除非另有說明，此報告結果僅對測試之樣品負責。本報告未經本公司書面許可，不可部分複製。  
 This document is issued by the Company subject to its General Conditions of Service printed overleaf, available on request or accessible at [www.sgs.com/terms\\_and\\_conditions.htm](http://www.sgs.com/terms_and_conditions.htm) and, for electronic format documents, subject to Terms and Conditions for Electronic Documents at [www.sgs.com/terms\\_e-document.htm](http://www.sgs.com/terms_e-document.htm). Attention is drawn to the limitation of liability, indemnification and jurisdiction issues defined therein. Any holder of this document is advised that information contained hereon reflects the Company's findings at the time of its intervention only and within the limits of Client's instructions, if any. The Company's sole responsibility is to its Client and this document does not exonerate parties to a transaction from exercising all their rights and obligations under the transaction documents. This document cannot be reproduced except in full, without prior written approval of the Company. Any unauthorized alteration, forgery or falsification of the content or appearance of this document is unlawful and offenders may be prosecuted to the fullest extent of the law.

SGS Taiwan Ltd.  
 台灣檢驗科技股份有限公司

No. 61, Kai-Fa Road, Nanzih Export Processing Zone, Kaohsiung, Taiwan /  
 t + 886 (07)301 2121

高雄市楠梓加工出口區開發路61號  
 f + 886 (07)3010867  
[www.tw.sgs.com](http://www.tw.sgs.com)

Member of the SGS Group

# Test Report

No. : KA/2019/11488

Date : 2019/01/30

Page: 10 of 34

FORMOSA PLASTICS CORPORATION

NO. 100, SHUI-GUAN RD., JEN-WU DIST., KAOHSIUNG CITY, TAIWAN (R.O.C.)

Test Item (s)	Unit	Method	MDL	Result
				No.1
HCFC-242 (CAS No.: 460-63-9)	mg/kg	With reference to US EPA 5021A. Analysis was performed by GC/MS.	1	n.d.
HCFC-243 (CAS No.: 460-69-5)	mg/kg	With reference to US EPA 5021A. Analysis was performed by GC/MS.	1	n.d.
HCFC-244	mg/kg	With reference to US EPA 5021A. Analysis was performed by GC/MS.	1	n.d.
HCFC-251 (CAS No.: 421-41-0)	mg/kg	With reference to US EPA 5021A. Analysis was performed by GC/MS.	1	n.d.
HCFC-252 (CAS No.: 819-00-1)	mg/kg	With reference to US EPA 5021A. Analysis was performed by GC/MS.	1	n.d.
HCFC-253 (CAS No.: 460-35-5)	mg/kg	With reference to US EPA 5021A. Analysis was performed by GC/MS.	1	n.d.
HCFC-261 (CAS No.: 420-97-3)	mg/kg	With reference to US EPA 5021A. Analysis was performed by GC/MS.	1	n.d.
HCFC-262 (CAS No.: 421-02-03)	mg/kg	With reference to US EPA 5021A. Analysis was performed by GC/MS.	1	n.d.
HCFC-271 (CAS No.: 430-55-7)	mg/kg	With reference to US EPA 5021A. Analysis was performed by GC/MS.	1	n.d.
<b>Halons</b>				
Halon-1211 (CAS No.: 353-59-3)	mg/kg	With reference to US EPA 5021A. Analysis was performed by GC/MS.	1	n.d.
Halon-1301 (CAS No.: 75-63-8)	mg/kg	With reference to US EPA 5021A. Analysis was performed by GC/MS.	1	n.d.
Halon-2402 (CAS No.: 124-73-2)	mg/kg	With reference to US EPA 5021A. Analysis was performed by GC/MS.	1	n.d.
<b>HBFCs (Hydrobromofluorocarbons)</b>				
HBFC-21B2 (CHFBr <sub>2</sub> ) (CAS No.: 1868-53-7)	mg/kg	With reference to US EPA 5021A. Analysis was performed by GC/MS.	1	n.d.
HBFC-22B1 (CHF <sub>2</sub> Br) (CAS No.: 1511-62-2)	mg/kg	With reference to US EPA 5021A. Analysis was performed by GC/MS.	1	n.d.
HBFC-31B1 (CH <sub>2</sub> FBr) (CAS No.: 373-52-4)	mg/kg	With reference to US EPA 5021A. Analysis was performed by GC/MS.	1	n.d.

Unless otherwise stated the results shown in this test report refer only to the sample(s) tested. This test report cannot be reproduced, except in full, without prior written permission of the Company. 除非另有說明，此報告結果僅對測試之樣品負責。本報告未經本公司書面許可，不可部分複製。  
 This document is issued by the Company subject to its General Conditions of Service printed overleaf, available on request or accessible at [www.sgs.com/terms\\_and\\_conditions.htm](http://www.sgs.com/terms_and_conditions.htm) and, for electronic format documents, subject to Terms and Conditions for Electronic Documents at [www.sgs.com/terms\\_e-document.htm](http://www.sgs.com/terms_e-document.htm). Attention is drawn to the limitation of liability, indemnification and jurisdiction issues defined therein. Any holder of this document is advised that information contained hereon reflects the Company's findings at the time of its intervention only and within the limits of Client's instructions, if any. The Company's sole responsibility is to its Client and this document does not exonerate parties to a transaction from exercising all their rights and obligations under the transaction documents. This document cannot be reproduced except in full, without prior written approval of the Company. Any unauthorized alteration, forgery or falsification of the content or appearance of this document is unlawful and offenders may be prosecuted to the fullest extent of the law.

# Test Report

No. : KA/2019/11488

Date : 2019/01/30

Page: 11 of 34

FORMOSA PLASTICS CORPORATION

NO. 100, SHUI-GUAN RD., JEN-WU DIST., KAOHSIUNG CITY, TAIWAN (R.O.C.)

Test Item (s)	Unit	Method	MDL	Result
				No.1
HBFC-121B4 (C2HFBr4)	mg/kg	With reference to US EPA 5021A. Analysis was performed by GC/MS.	1	n.d.
HBFC-122B3 (C2HF2Br3)	mg/kg	With reference to US EPA 5021A. Analysis was performed by GC/MS.	1	n.d.
HBFC-123B2 (C2HF3Br2)	mg/kg	With reference to US EPA 5021A. Analysis was performed by GC/MS.	1	n.d.
HBFC-124B1 (C2HF4Br)	mg/kg	With reference to US EPA 5021A. Analysis was performed by GC/MS.	1	n.d.
HBFC-131B3 (C2H2FBr3)	mg/kg	With reference to US EPA 5021A. Analysis was performed by GC/MS.	1	n.d.
HBFC-132B2 (C2H2F2Br2)	mg/kg	With reference to US EPA 5021A. Analysis was performed by GC/MS.	1	n.d.
HBFC-133B1 (C2H2F3Br)	mg/kg	With reference to US EPA 5021A. Analysis was performed by GC/MS.	1	n.d.
HBFC-141B2 (C2H3FBr2)	mg/kg	With reference to US EPA 5021A. Analysis was performed by GC/MS.	1	n.d.
HBFC-142B1 (C2H3F2Br)	mg/kg	With reference to US EPA 5021A. Analysis was performed by GC/MS.	1	n.d.
HBFC-151B1 (C2H4FBr)	mg/kg	With reference to US EPA 5021A. Analysis was performed by GC/MS.	1	n.d.
HBFC-221B6 (C3HFBr6)	mg/kg	With reference to US EPA 5021A. Analysis was performed by GC/MS.	1	n.d.
HBFC-222B5 (C3HF2Br5)	mg/kg	With reference to US EPA 5021A. Analysis was performed by GC/MS.	1	n.d.
HBFC-223B4 (C3HF3Br4)	mg/kg	With reference to US EPA 5021A. Analysis was performed by GC/MS.	1	n.d.
HBFC-224B3 (C3HF4Br3)	mg/kg	With reference to US EPA 5021A. Analysis was performed by GC/MS.	1	n.d.
HBFC-225B2 (C3HF5Br2)	mg/kg	With reference to US EPA 5021A. Analysis was performed by GC/MS.	1	n.d.
HBFC-226B1 (C3HF6Br)	mg/kg	With reference to US EPA 5021A. Analysis was performed by GC/MS.	1	n.d.

Unless otherwise stated the results shown in this test report refer only to the sample(s) tested. This test report cannot be reproduced, except in full, without prior written permission of the Company. 除非另有說明，此報告結果僅對測試之樣品負責。本報告未經本公司書面許可，不可部分複製。  
 This document is issued by the Company subject to its General Conditions of Service printed overleaf, available on request or accessible at [www.sgs.com/terms\\_and\\_conditions.htm](http://www.sgs.com/terms_and_conditions.htm) and, for electronic format documents, subject to Terms and Conditions for Electronic Documents at [www.sgs.com/terms\\_e-document.htm](http://www.sgs.com/terms_e-document.htm). Attention is drawn to the limitation of liability, indemnification and jurisdiction issues defined therein. Any holder of this document is advised that information contained hereon reflects the Company's findings at the time of its intervention only and within the limits of Client's instructions, if any. The Company's sole responsibility is to its Client and this document does not exonerate parties to a transaction from exercising all their rights and obligations under the transaction documents. This document cannot be reproduced except in full, without prior written approval of the Company. Any unauthorized alteration, forgery or falsification of the content or appearance of this document is unlawful and offenders may be prosecuted to the fullest extent of the law.

# Test Report

No. : KA/2019/11488

Date : 2019/01/30

Page: 12 of 34

FORMOSA PLASTICS CORPORATION

NO. 100, SHUI-GUAN RD., JEN-WU DIST., KAOHSIUNG CITY, TAIWAN (R.O.C.)

Test Item (s)	Unit	Method	MDL	Result
				No.1
HBFC-231B5 (C3H2FBr5)	mg/kg	With reference to US EPA 5021A. Analysis was performed by GC/MS.	1	n.d.
HBFC-232B4 (C3H2F2Br4)	mg/kg	With reference to US EPA 5021A. Analysis was performed by GC/MS.	1	n.d.
HBFC-233B3 (C3H2F3Br3)	mg/kg	With reference to US EPA 5021A. Analysis was performed by GC/MS.	1	n.d.
HBFC-234B2 (C3H2F4Br2)	mg/kg	With reference to US EPA 5021A. Analysis was performed by GC/MS.	1	n.d.
HBFC-235B1 (C3H2F5Br)	mg/kg	With reference to US EPA 5021A. Analysis was performed by GC/MS.	1	n.d.
HBFC-241B4 (C3H3FBr4)	mg/kg	With reference to US EPA 5021A. Analysis was performed by GC/MS.	1	n.d.
HBFC-242B3 (C3H3F2Br3)	mg/kg	With reference to US EPA 5021A. Analysis was performed by GC/MS.	1	n.d.
HBFC-243B2 (C3H3F3Br2)	mg/kg	With reference to US EPA 5021A. Analysis was performed by GC/MS.	1	n.d.
HBFC-244B1 (C3H3F4Br)	mg/kg	With reference to US EPA 5021A. Analysis was performed by GC/MS.	1	n.d.
HBFC-251B3 (C3H4FBr3)	mg/kg	With reference to US EPA 5021A. Analysis was performed by GC/MS.	1	n.d.
HBFC-252B2 (C3H4F2Br2)	mg/kg	With reference to US EPA 5021A. Analysis was performed by GC/MS.	1	n.d.
HBFC-253B1 (C3H4F3Br)	mg/kg	With reference to US EPA 5021A. Analysis was performed by GC/MS.	1	n.d.
HBFC-261B2 (C3H5FBr2)	mg/kg	With reference to US EPA 5021A. Analysis was performed by GC/MS.	1	n.d.
HBFC-262B1 (C3H5F2Br)	mg/kg	With reference to US EPA 5021A. Analysis was performed by GC/MS.	1	n.d.
HBFC-271B1 (C3H6FBr)	mg/kg	With reference to US EPA 5021A. Analysis was performed by GC/MS.	1	n.d.
<b>CHCs (Chlorinate hydrocarbon)</b>				
1,1,1,2-Tetrachloroethane (CAS No.: 630-20-6)	mg/kg	With reference to US EPA 5021A. Analysis was performed by GC/MS.	1	n.d.

Unless otherwise stated the results shown in this test report refer only to the sample(s) tested. This test report cannot be reproduced, except in full, without prior written permission of the Company. 除非另有說明，此報告結果僅對測試之樣品負責。本報告未經本公司書面許可，不可部分複製。  
 This document is issued by the Company subject to its General Conditions of Service printed overleaf, available on request or accessible at [www.sgs.com/terms\\_and\\_conditions.htm](http://www.sgs.com/terms_and_conditions.htm) and, for electronic format documents, subject to Terms and Conditions for Electronic Documents at [www.sgs.com/terms\\_e-document.htm](http://www.sgs.com/terms_e-document.htm). Attention is drawn to the limitation of liability, indemnification and jurisdiction issues defined therein. Any holder of this document is advised that information contained hereon reflects the Company's findings at the time of its intervention only and within the limits of Client's instructions, if any. The Company's sole responsibility is to its Client and this document does not exonerate parties to a transaction from exercising all their rights and obligations under the transaction documents. This document cannot be reproduced except in full, without prior written approval of the Company. Any unauthorized alteration, forgery or falsification of the content or appearance of this document is unlawful and offenders may be prosecuted to the fullest extent of the law.

# Test Report

No. : KA/2019/11488

Date : 2019/01/30

Page: 13 of 34

FORMOSA PLASTICS CORPORATION

NO. 100, SHUI-GUAN RD., JEN-WU DIST., KAOHSIUNG CITY, TAIWAN (R.O.C.)

Test Item (s)	Unit	Method	MDL	Result
				No.1
1,1,1-Trichloroethane (CAS No.: 71-55-6)	mg/kg	With reference to US EPA 5021A. Analysis was performed by GC/MS.	1	n.d.
1,1,2,2-Tetrachloroethane (CAS No.: 79-34-5)	mg/kg	With reference to US EPA 5021A. Analysis was performed by GC/MS.	1	n.d.
1,1,2-Trichloroethane (CAS No.: 79-00-5)	mg/kg	With reference to US EPA 5021A. Analysis was performed by GC/MS.	1	n.d.
1,1-Dichloroethane (CAS No.: 75-34-3)	mg/kg	With reference to US EPA 5021A. Analysis was performed by GC/MS.	1	n.d.
1,1-Dichloroethene (CAS No.: 75-35-4)	mg/kg	With reference to US EPA 5021A. Analysis was performed by GC/MS.	1	n.d.
1,1-Dichloropropene (CAS No.: 563-58-6)	mg/kg	With reference to US EPA 5021A. Analysis was performed by GC/MS.	1	n.d.
1,2,3-Trichloropropane (CAS No.: 96-18-4)	mg/kg	With reference to US EPA 5021A. Analysis was performed by GC/MS.	1	n.d.
1,2-Dichloroethane (CAS No.: 107-06-2)	mg/kg	With reference to US EPA 5021A. Analysis was performed by GC/MS.	1	n.d.
1,2-Dichloropropane (CAS No.: 78-87-5)	mg/kg	With reference to US EPA 5021A. Analysis was performed by GC/MS.	1	n.d.
1,3-Dichloropropane (CAS No.: 142-28-9)	mg/kg	With reference to US EPA 5021A. Analysis was performed by GC/MS.	1	n.d.
2,2-Dichloropropane (CAS No.: 594-20-7)	mg/kg	With reference to US EPA 5021A. Analysis was performed by GC/MS.	1	n.d.
Carbon tetrachloride (CAS No.: 56-23-5)	mg/kg	With reference to US EPA 5021A. Analysis was performed by GC/MS.	1	n.d.
Chloroethane (CAS No.: 75-00-3)	mg/kg	With reference to US EPA 5021A. Analysis was performed by GC/MS.	1	n.d.
Chloroform (CAS No.: 67-66-3)	mg/kg	With reference to US EPA 5021A. Analysis was performed by GC/MS.	1	n.d.
Chloromethane (CAS No.: 74-87-3)	mg/kg	With reference to US EPA 5021A. Analysis was performed by GC/MS.	1	n.d.
cis-1,2-Dichloroethene (CAS No.: 156-59-2)	mg/kg	With reference to US EPA 5021A. Analysis was performed by GC/MS.	1	n.d.

Unless otherwise stated the results shown in this test report refer only to the sample(s) tested. This test report cannot be reproduced, except in full, without prior written permission of the Company. 除非另有說明，此報告結果僅對測試之樣品負責。本報告未經本公司書面許可，不可部分複製。  
 This document is issued by the Company subject to its General Conditions of Service printed overleaf, available on request or accessible at [www.sgs.com/terms\\_and\\_conditions.htm](http://www.sgs.com/terms_and_conditions.htm) and, for electronic format documents, subject to Terms and Conditions for Electronic Documents at [www.sgs.com/terms\\_e-document.htm](http://www.sgs.com/terms_e-document.htm). Attention is drawn to the limitation of liability, indemnification and jurisdiction issues defined therein. Any holder of this document is advised that information contained hereon reflects the Company's findings at the time of its intervention only and within the limits of Client's instructions, if any. The Company's sole responsibility is to its Client and this document does not exonerate parties to a transaction from exercising all their rights and obligations under the transaction documents. This document cannot be reproduced except in full, without prior written approval of the Company. Any unauthorized alteration, forgery or falsification of the content or appearance of this document is unlawful and offenders may be prosecuted to the fullest extent of the law.

SGS Taiwan Ltd.  
 台灣檢驗科技股份有限公司

No. 61, Kai-Fa Road, Nanzih Export Processing Zone, Kaohsiung, Taiwan /  
 t + 886 (07)301 2121

高雄市楠梓加工出口區開發路61號  
 f + 886 (07)3010867  
[www.tw.sgs.com](http://www.tw.sgs.com)

Member of the SGS Group

# Test Report

No. : KA/2019/11488

Date : 2019/01/30

Page: 14 of 34

FORMOSA PLASTICS CORPORATION

NO. 100, SHUI-GUAN RD., JEN-WU DIST., KAOHSIUNG CITY, TAIWAN (R.O.C.)

Test Item (s)	Unit	Method	MDL	Result
				No.1
cis-1,3-Dichloropropene (CAS No.: 10061-01-5)	mg/kg	With reference to US EPA 5021A. Analysis was performed by GC/MS.	1	n.d.
Hexachlorobutadiene (CAS No.: 87-68-3)	mg/kg	With reference to US EPA 5021A. Analysis was performed by GC/MS.	1	n.d.
Methylene Chloride (CAS No.: 75-09-2)	mg/kg	With reference to US EPA 5021A. Analysis was performed by GC/MS.	1	n.d.
Tetrachloroethene (CAS No.: 127-18-4)	mg/kg	With reference to US EPA 5021A. Analysis was performed by GC/MS.	1	n.d.
trans-1,2-Dichloroethene (CAS No.: 156-60-5)	mg/kg	With reference to US EPA 5021A. Analysis was performed by GC/MS.	1	n.d.
trans-1,3-Dichloropropene (CAS No.: 10061-02-6)	mg/kg	With reference to US EPA 5021A. Analysis was performed by GC/MS.	1	n.d.
Trichloroethylene (CAS No.: 79-01-6)	mg/kg	With reference to US EPA 5021A. Analysis was performed by GC/MS.	1	n.d.
Bromomethane (CAS No.: 74-83-9)	mg/kg	With reference to US EPA 5021A. Analysis was performed by GC/MS.	1	n.d.
Sulfur Hexafluoride (SF6) (CAS No.: 2551-62-4)	mg/kg	With reference to US EPA 5021A. Analysis was performed by GC/MS.	1	n.d.
Dimethyl Fumarate (CAS No.: 624-49-7)	mg/kg	With reference to US EPA 3550C: 2007. Analysis was performed by GC/MS.	0.1	n.d.
Tris(2-chloroethyl) phosphate (TCEP) (CAS No.: 115-96-8)	mg/kg	With reference to US EPA 3550C: 2007. Analysis was performed by GC/MS.	5	n.d.
TCPP (Tris -(1-chloro-2-propyl)phosphate) (CAS NO.:13674-84-5)	mg/kg	With reference to US EPA 3550C: 2007. Analysis was performed by GC/MS.	5	n.d.
TDCPP (Tris(1,3-dichloro-2-propyl)phosphate) (CAS No.: 13674-87-8)	mg/kg	With reference to US EPA 3550C: 2007. Analysis was performed by GC/MS.	5	n.d.
Hexabromocyclododecane (HBCDD) and all major diastereoisomers identified ( $\alpha$ -HBCDD, $\beta$ - HBCDD, $\gamma$ - HBCDD) (CAS No.: 25637-99-4 and 3194-55-6 (134237-51-7, 134237-50-6, 134237-52-8))	mg/kg	With reference to IEC 62321: 2008. Analysis was performed by GC/MS.	5	n.d.

Unless otherwise stated the results shown in this test report refer only to the sample(s) tested. This test report cannot be reproduced, except in full, without prior written permission of the Company. 除非另有說明，此報告結果僅對測試之樣品負責。本報告未經本公司書面許可，不可部分複製。  
 This document is issued by the Company subject to its General Conditions of Service printed overleaf, available on request or accessible at [www.sgs.com/terms\\_and\\_conditions.htm](http://www.sgs.com/terms_and_conditions.htm) and, for electronic format documents, subject to Terms and Conditions for Electronic Documents at [www.sgs.com/terms\\_e-document.htm](http://www.sgs.com/terms_e-document.htm). Attention is drawn to the limitation of liability, indemnification and jurisdiction issues defined therein. Any holder of this document is advised that information contained hereon reflects the Company's findings at the time of its intervention only and within the limits of Client's instructions, if any. The Company's sole responsibility is to its Client and this document does not exonerate parties to a transaction from exercising all their rights and obligations under the transaction documents. This document cannot be reproduced except in full, without prior written approval of the Company. Any unauthorized alteration, forgery or falsification of the content or appearance of this document is unlawful and offenders may be prosecuted to the fullest extent of the law.



# Test Report

No. : KA/2019/11488

Date : 2019/01/30

Page: 15 of 34

FORMOSA PLASTICS CORPORATION

NO. 100, SHUI-GUAN RD., JEN-WU DIST., KAOHSIUNG CITY, TAIWAN (R.O.C.)

Test Item (s)	Unit	Method	MDL	Result
				No.1
Arsenic (As) (※2)	mg/kg	SGS In-House method-RSTS-EE-SVHC-007. Analyzed by ICP-AES.	50	n.d.
Diarsenic trioxide (CAS No.: 1327-53-3)	mg/kg	Calculated from the result of Arsenic.	50 (▲)	n.d.
Diarsenic pentaoxide (CAS No.: 1303-28-2)	mg/kg	Calculated from the result of Arsenic.	50 (▲)	n.d.
Nickel (Ni)	mg/kg	With reference to US EPA 3052: 1996. Analysis was performed by ICP-AES.	2	n.d.
Halogen-Bromine (Br) (CAS No.: 10097-32-2)	mg/kg	With reference to BS EN 14582:2016. Analysis was performed by IC.	50	n.d.
Halogen-Chlorine (Cl) (CAS No.: 22537-15-1)	mg/kg	With reference to BS EN 14582:2016. Analysis was performed by IC.	50	282
Perchlorate (CAS No.: 14797-73-0)	mg/kg	Analysis was performed by IC.	0.1	n.d.
BBP (Butyl Benzyl phthalate) (CAS No.: 85-68-7)	mg/kg	With reference to IEC 62321-8:2017. Analysis was performed by GC/MS.	50	n.d.
DBP (Dibutyl phthalate) (CAS No.: 84-74-2)	mg/kg	With reference to IEC 62321-8:2017. Analysis was performed by GC/MS.	50	n.d.
DEHP (Di- (2-ethylhexyl) phthalate) (CAS No.: 117-81-7)	mg/kg	With reference to IEC 62321-8:2017. Analysis was performed by GC/MS.	50	n.d.
DIBP (Di-isobutyl phthalate) (CAS No.: 84-69-5)	mg/kg	With reference to IEC 62321-8:2017. Analysis was performed by GC/MS.	50	n.d.
DIDP (Di-isodecyl phthalate) (CAS No.: 26761-40-0, 68515-49-1)	mg/kg	With reference to IEC 62321-8:2017. Analysis was performed by GC/MS.	50	n.d.
DINP (Di-isononyl phthalate) (CAS No.: 28553-12-0, 68515-48-0)	mg/kg	With reference to IEC 62321-8:2017. Analysis was performed by GC/MS.	50	n.d.
DNOP (Di-n-octyl phthalate) (CAS No.: 117-84-0)	mg/kg	With reference to IEC 62321-8:2017. Analysis was performed by GC/MS.	50	n.d.
DNHP (Di-n-hexyl phthalate) (CAS No.: 84-75-3)	mg/kg	With reference to IEC 62321-8:2017. Analysis was performed by GC/MS.	50	n.d.
Radioactive Substances	μSv/ hour	Geiger counter.	-	Negative*

Unless otherwise stated the results shown in this test report refer only to the sample(s) tested. This test report cannot be reproduced, except in full, without prior written permission of the Company. 除非另有說明，此報告結果僅對測試之樣品負責。本報告未經本公司書面許可，不可部分複製。  
This document is issued by the Company subject to its General Conditions of Service printed overleaf, available on request or accessible at [www.sgs.com/terms\\_and\\_conditions.htm](http://www.sgs.com/terms_and_conditions.htm) and, for electronic format documents, subject to Terms and Conditions for Electronic Documents at [www.sgs.com/terms\\_e-document.htm](http://www.sgs.com/terms_e-document.htm). Attention is drawn to the limitation of liability, indemnification and jurisdiction issues defined therein. Any holder of this document is advised that information contained hereon reflects the Company's findings at the time of its intervention only and within the limits of Client's instructions, if any. The Company's sole responsibility is to its Client and this document does not exonerate parties to a transaction from exercising all their rights and obligations under the transaction documents. This document cannot be reproduced except in full, without prior written approval of the Company. Any unauthorized alteration, forgery or falsification of the content or appearance of this document is unlawful and offenders may be prosecuted to the fullest extent of the law.

# Test Report

No. : KA/2019/11488

Date : 2019/01/30

Page: 16 of 34

FORMOSA PLASTICS CORPORATION

NO. 100, SHUI-GUAN RD., JEN-WU DIST., KAOHSIUNG CITY, TAIWAN (R.O.C.)

Test Item (s)	Unit	Method	MDL	Result
				No.1
<b>Polynuclear Aromatic Hydrocarbons (PAHs)</b>				
Acenaphthene (CAS No.: 83-32-9)	mg/kg	With reference to AfPS GS 2014:01 PAK. Analysis was performed by GC/MS.	0.2	n.d.
Acenaphthylene (CAS No.: 208-96-8)	mg/kg		0.2	n.d.
Anthracene (CAS No.: 120-12-7)	mg/kg		0.2	n.d.
Benzo[a]anthracene (CAS No.: 56-55-3)	mg/kg		0.2	n.d.
Benzo[a]pyrene (CAS No.: 50-32-8)	mg/kg		0.2	n.d.
Benzo[b]fluoranthene (CAS No.: 205-99-2)	mg/kg		0.2	n.d.
Benzo[g,h,i]perylene (CAS No.: 191-24-2)	mg/kg		0.2	n.d.
Benzo[k]fluoranthene (CAS No.: 207-08-9)	mg/kg		0.2	n.d.
Chrysene (CAS No.: 218-01-9)	mg/kg		0.2	n.d.
Dibenzo[a,h]anthracene (CAS No.: 53-70-3)	mg/kg		0.2	n.d.
Fluoranthene (CAS No.: 206-44-0)	mg/kg		0.2	n.d.
Fluorene (CAS No.: 86-73-7)	mg/kg		0.2	n.d.
Indeno[1,2,3-c,d] pyrene (CAS No.: 193-39-5)	mg/kg		0.2	n.d.
Naphthalene (CAS No.: 91-20-3)	mg/kg		0.2	0.274
Phenanthrene (CAS No.: 85-01-8)	mg/kg		0.2	n.d.
Pyrene (CAS No.: 129-00-0)	mg/kg		0.2	n.d.
Benzo[j]fluoranthene (CAS No.: 205-82-3)	mg/kg		0.2	n.d.
Benzo[e]pyrene (CAS No.: 192-97-2)	mg/kg		0.2	n.d.
Sum of 18 PAHs	mg/kg	-	0.274	

Unless otherwise stated the results shown in this test report refer only to the sample(s) tested. This test report cannot be reproduced, except in full, without prior written permission of the Company. 除非另有說明，此報告結果僅對測試之樣品負責。本報告未經本公司書面許可，不可部分複製。  
This document is issued by the Company subject to its General Conditions of Service printed overleaf, available on request or accessible at [www.sgs.com/terms\\_and\\_conditions.htm](http://www.sgs.com/terms_and_conditions.htm) and, for electronic format documents, subject to Terms and Conditions for Electronic Documents at [www.sgs.com/terms\\_e-document.htm](http://www.sgs.com/terms_e-document.htm). Attention is drawn to the limitation of liability, indemnification and jurisdiction issues defined therein. Any holder of this document is advised that information contained hereon reflects the Company's findings at the time of its intervention only and within the limits of Client's instructions, if any. The Company's sole responsibility is to its Client and this document does not exonerate parties to a transaction from exercising all their rights and obligations under the transaction documents. This document cannot be reproduced except in full, without prior written approval of the Company. Any unauthorized alteration, forgery or falsification of the content or appearance of this document is unlawful and offenders may be prosecuted to the fullest extent of the law.

# Test Report

No. : KA/2019/11488

Date : 2019/01/30

Page: 17 of 34

FORMOSA PLASTICS CORPORATION  
NO. 100, SHUI-GUAN RD., JEN-WU DIST., KAOHSIUNG CITY, TAIWAN (R.O.C.)

## Note :

1. mg/kg = ppm ; 0.1wt% = 1000ppm
2. n.d. = Not Detected
3. MDL = Method Detection Limit
4. " - " = Not Regulated
5. \*\* = Qualitative analysis (No Unit)
6. Negative = Undetectable / Positive = Detectable
7. Testing range of asbestos qualitative analysis is from less than 0.1% to 100%. The judgment criterion: asbestos fibers being found is shown as "Positive"; asbestos fibers not being found is shown as "Negative".
8. Negative\*/Positive\*: The test result of Geiger counter is from comparison between test outcome and environment background. In general, there is little radiation dose existing in environment. (Radiation dose from environment background usually less than or equal to 0.2μSv/hr)  
The test result less than environment background was shown as Negative\*; the result greater than environment background was shown as Positive\*.
9. (▲) : The MDL was evaluated for element / tested substance.

Conversion Formula :  $AX = A \times F$

AX	A	F
Diarsenic pentaoxide	Arsenic	1.5339
Diarsenic trioxide	Arsenic	1.3203
Beryllium oxide (BeO)	Beryllium	2.7753

10. Since beryllium copper is a metal alloy of copper and beryllium and the test result is n.d. for beryllium, we can have conclusion that the beryllium copper is n.d..
11. (※2): The extracted soluble Arsenic is detected by ICP-AES.

## PFOS Reference Information : POPs - (EU) 757/2010

Outlawing PFOS as substances or preparations in concentrations above 0.001% (10ppm), in semi-finished products or articles or parts at a level above 0.1%(1000ppm), in textiles or other coated materials above 1μg/m<sup>2</sup>.

PFOS refer to Perfluorooctanesulfonic acid and its derivatives including Perfluorooctanesulfonic acid, Perfluorooctane sulfonamide, N-Methylperfluorooctane sulfonamide, N-Ethylperfluorooctane sulfonamide, N-Methylperfluorooctane sulfonamidoethanol and N-Ethylperfluorooctane sulfonamidoethanol.

# Test Report

No. : KA/2019/11488

Date : 2019/01/30

Page: 18 of 34

FORMOSA PLASTICS CORPORATION

NO. 100, SHUI-GUAN RD., JEN-WU DIST., KAOHSIUNG CITY, TAIWAN (R.O.C.)

## △ AfPS (German commission for Product Safety): GS PAHs requirements

Parameter	Category 1	Category 2		Category 3	
	Material indented to be put in the mouth or toys with intended skin contact (longer than 30 s).	Materials not falling under category 1 with foreseeable contact to skin for longer than 30 seconds (long-term skin or frequent contact).		Materials not falling under category 1 or 2 with foreseeable contact to skin for less than 30 seconds (short-term skin contact).	
		Toy under 2009/48/EC	Other products under ProdSG	Toy under 2009/48/EC	Other products under ProdSG
Naphthalene	< 1	< 2		< 10	
Acenaphthylene	< 1 Sum	< 5 Sum	< 10 Sum	< 20 Sum	< 50 Sum
Acenaphthene					
Fluorene					
Phenanthrene					
Anthracene					
Fluoranthene					
Pyrene					
Benzo[a]anthracene	< 0.2	< 0.2	< 0.5	< 0.5	< 1
Chrysene	< 0.2	< 0.2	< 0.5	< 0.5	< 1
Benzo[b]fluoranthene	< 0.2	< 0.2	< 0.5	< 0.5	< 1
Benzo[j]fluoranthene	< 0.2	< 0.2	< 0.5	< 0.5	< 1
Benzo[k]fluoranthene	< 0.2	< 0.2	< 0.5	< 0.5	< 1
Benzo[a]pyrene	< 0.2	< 0.2	< 0.5	< 0.5	< 1
Benzo[e]pyrene	< 0.2	< 0.2	< 0.5	< 0.5	< 1
Indeno[1,2,3-c,d] pyrene	< 0.2	< 0.2	< 0.5	< 0.5	< 1
Dibenzo[a,h]anthracene	< 0.2	< 0.2	< 0.5	< 0.5	< 1
Benzo[g,h,i]perylene	< 0.2	< 0.2	< 0.5	< 0.5	< 1
Sum of 18 PAH	< 1	< 5	< 10	< 20	< 50

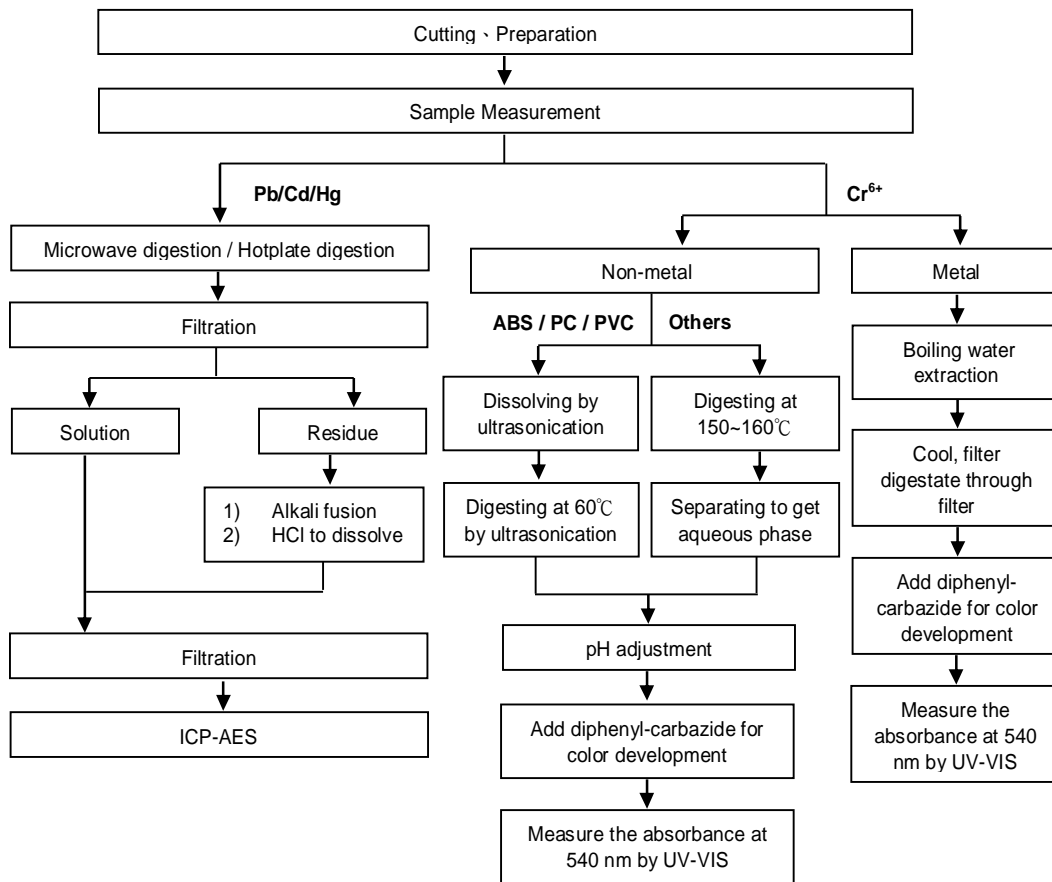
Unit: mg/kg

Unless otherwise stated the results shown in this test report refer only to the sample(s) tested. This test report cannot be reproduced, except in full, without prior written permission of the Company. 除非另有說明，此報告結果僅對測試之樣品負責。本報告未經本公司書面許可，不可部分複製。  
 This document is issued by the Company subject to its General Conditions of Service printed overleaf, available on request or accessible at [www.sgs.com/terms\\_and\\_conditions.htm](http://www.sgs.com/terms_and_conditions.htm) and, for electronic format documents, subject to Terms and Conditions for Electronic Documents at [www.sgs.com/terms\\_e-document.htm](http://www.sgs.com/terms_e-document.htm). Attention is drawn to the limitation of liability, indemnification and jurisdiction issues defined therein. Any holder of this document is advised that information contained hereon reflects the Company's findings at the time of its intervention only and within the limits of Client's instructions, if any. The Company's sole responsibility is to its Client and this document does not exonerate parties to a transaction from exercising all their rights and obligations under the transaction documents. This document cannot be reproduced except in full, without prior written approval of the Company. Any unauthorized alteration, forgery or falsification of the content or appearance of this document is unlawful and offenders may be prosecuted to the fullest extent of the law.

### Analytical flow chart of Heavy Metal

These samples were dissolved totally by pre-conditioning method according to below flow chart. (Cr<sup>6+</sup> test method excluded)

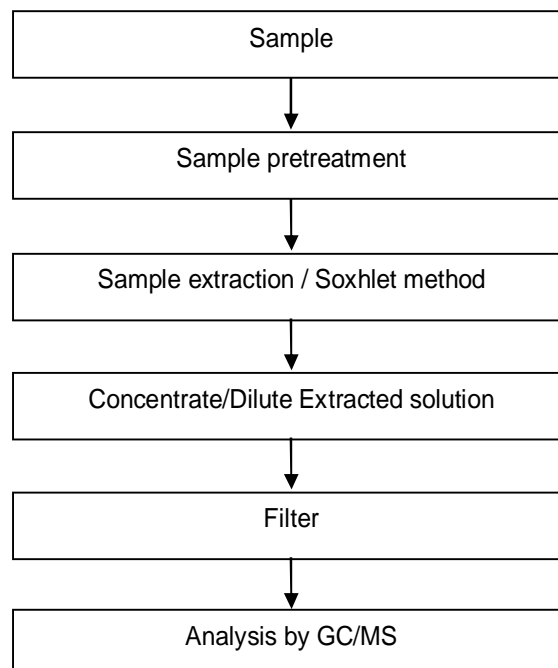
- Technician : Jony Liu
- Supervisor: Ray Chang



Unless otherwise stated the results shown in this test report refer only to the sample(s) tested. This test report cannot be reproduced, except in full, without prior written permission of the Company. 除非另有說明，此報告結果僅對測試之樣品負責。本報告未經本公司書面許可，不可部分複製。  
This document is issued by the Company subject to its General Conditions of Service printed overleaf, available on request or accessible at [www.sgs.com/terms\\_and\\_conditions.htm](http://www.sgs.com/terms_and_conditions.htm) and, for electronic format documents, subject to Terms and Conditions for Electronic Documents at [www.sgs.com/terms\\_e-document.htm](http://www.sgs.com/terms_e-document.htm). Attention is drawn to the limitation of liability, indemnification and jurisdiction issues defined therein. Any holder of this document is advised that information contained hereon reflects the Company's findings at the time of its intervention only and within the limits of Client's instructions, if any. The Company's sole responsibility is to its Client and this document does not exonerate parties to a transaction from exercising all their rights and obligations under the transaction documents. This document cannot be reproduced except in full, without prior written approval of the Company. Any unauthorized alteration, forgery or falsification of the content or appearance of this document is unlawful and offenders may be prosecuted to the fullest extent of the law.

## PBB/PBDE analytical FLOW CHART

- Technician : Dorothy Chen
- Supervisor: Ray Chang



Unless otherwise stated the results shown in this test report refer only to the sample(s) tested. This test report cannot be reproduced, except in full, without prior written permission of the Company. 除非另有說明，此報告結果僅對測試之樣品負責。本報告未經本公司書面許可，不可部分複製。  
 This document is issued by the Company subject to its General Conditions of Service printed overleaf, available on request or accessible at [www.sgs.com/terms\\_and\\_conditions.htm](http://www.sgs.com/terms_and_conditions.htm) and, for electronic format documents, subject to Terms and Conditions for Electronic Documents at [www.sgs.com/terms\\_e-document.htm](http://www.sgs.com/terms_e-document.htm). Attention is drawn to the limitation of liability, indemnification and jurisdiction issues defined therein. Any holder of this document is advised that information contained hereon reflects the Company's findings at the time of its intervention only and within the limits of Client's instructions, if any. The Company's sole responsibility is to its Client and this document does not exonerate parties to a transaction from exercising all their rights and obligations under the transaction documents. This document cannot be reproduced except in full, without prior written approval of the Company. Any unauthorized alteration, forgery or falsification of the content or appearance of this document is unlawful and offenders may be prosecuted to the fullest extent of the law.



FORMOSA PLASTICS CORPORATION

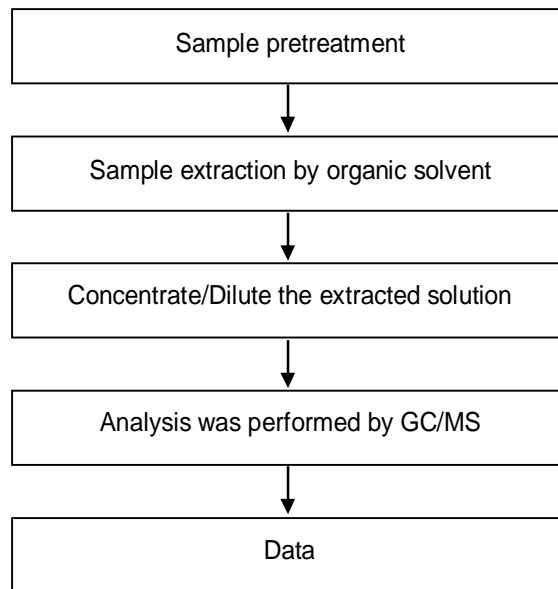
NO. 100, SHUI-GUAN RD., JEN-WU DIST., KAOHSIUNG CITY, TAIWAN (R.O.C.)

### Chlorinated Flame retardant analytical flow chart

- Technician: Dorothy Chen
- Supervisor: Ray Chang

【Reference method: US EPA 3550C】

【Test Items: PCBs, PCNs, PCTs, Mirex 】

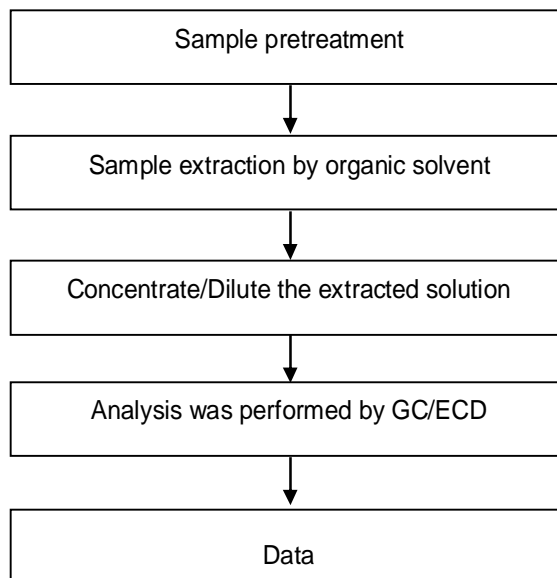


Unless otherwise stated the results shown in this test report refer only to the sample(s) tested. This test report cannot be reproduced, except in full, without prior written permission of the Company. 除非另有說明，此報告結果僅對測試之樣品負責。本報告未經本公司書面許可，不可部分複製。  
 This document is issued by the Company subject to its General Conditions of Service printed overleaf, available on request or accessible at [www.sgs.com/terms\\_and\\_conditions.htm](http://www.sgs.com/terms_and_conditions.htm) and, for electronic format documents, subject to Terms and Conditions for Electronic Documents at [www.sgs.com/terms\\_e-document.htm](http://www.sgs.com/terms_e-document.htm). Attention is drawn to the limitation of liability, indemnification and jurisdiction issues defined therein. Any holder of this document is advised that information contained hereon reflects the Company's findings at the time of its intervention only and within the limits of Client's instructions, if any. The Company's sole responsibility is to its Client and this document does not exonerate parties to a transaction from exercising all their rights and obligations under the transaction documents. This document cannot be reproduced except in full, without prior written approval of the Company. Any unauthorized alteration, forgery or falsification of the content or appearance of this document is unlawful and offenders may be prosecuted to the fullest extent of the law.

## Analytical flow chart - Chlorinated Paraffins

- Technician: Dorothy Chen
- Supervisor: Ray Chang

【Reference method: US EPA 3550C】



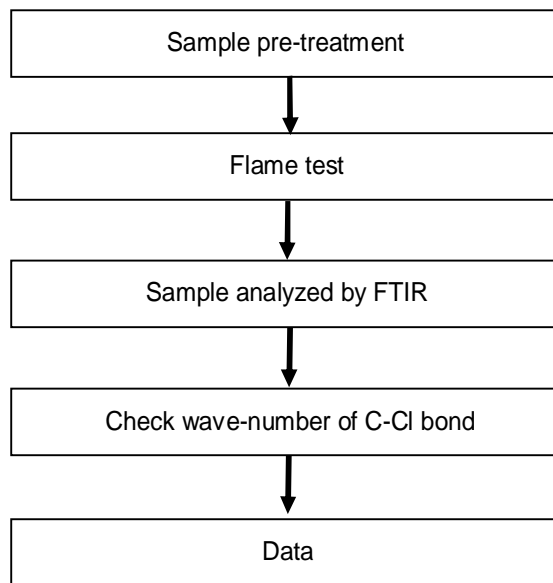
Unless otherwise stated the results shown in this test report refer only to the sample(s) tested. This test report cannot be reproduced, except in full, without prior written permission of the Company. 除非另有說明，此報告結果僅對測試之樣品負責。本報告未經本公司書面許可，不可部分複製。  
 This document is issued by the Company subject to its General Conditions of Service printed overleaf, available on request or accessible at [www.sgs.com/terms\\_and\\_conditions.htm](http://www.sgs.com/terms_and_conditions.htm) and, for electronic format documents, subject to Terms and Conditions for Electronic Documents at [www.sgs.com/terms\\_e-document.htm](http://www.sgs.com/terms_e-document.htm). Attention is drawn to the limitation of liability, indemnification and jurisdiction issues defined therein. Any holder of this document is advised that information contained hereon reflects the Company's findings at the time of its intervention only and within the limits of Client's instructions, if any. The Company's sole responsibility is to its Client and this document does not exonerate parties to a transaction from exercising all their rights and obligations under the transaction documents. This document cannot be reproduced except in full, without prior written approval of the Company. Any unauthorized alteration, forgery or falsification of the content or appearance of this document is unlawful and offenders may be prosecuted to the fullest extent of the law.

FORMOSA PLASTICS CORPORATION

NO. 100, SHUI-GUAN RD., JEN-WU DIST., KAOHSIUNG CITY, TAIWAN (R.O.C.)

### Analysis flow chart for determination of PVC in polymer material

- Technician: Hannah Tai
- Supervisor: Roger Lin

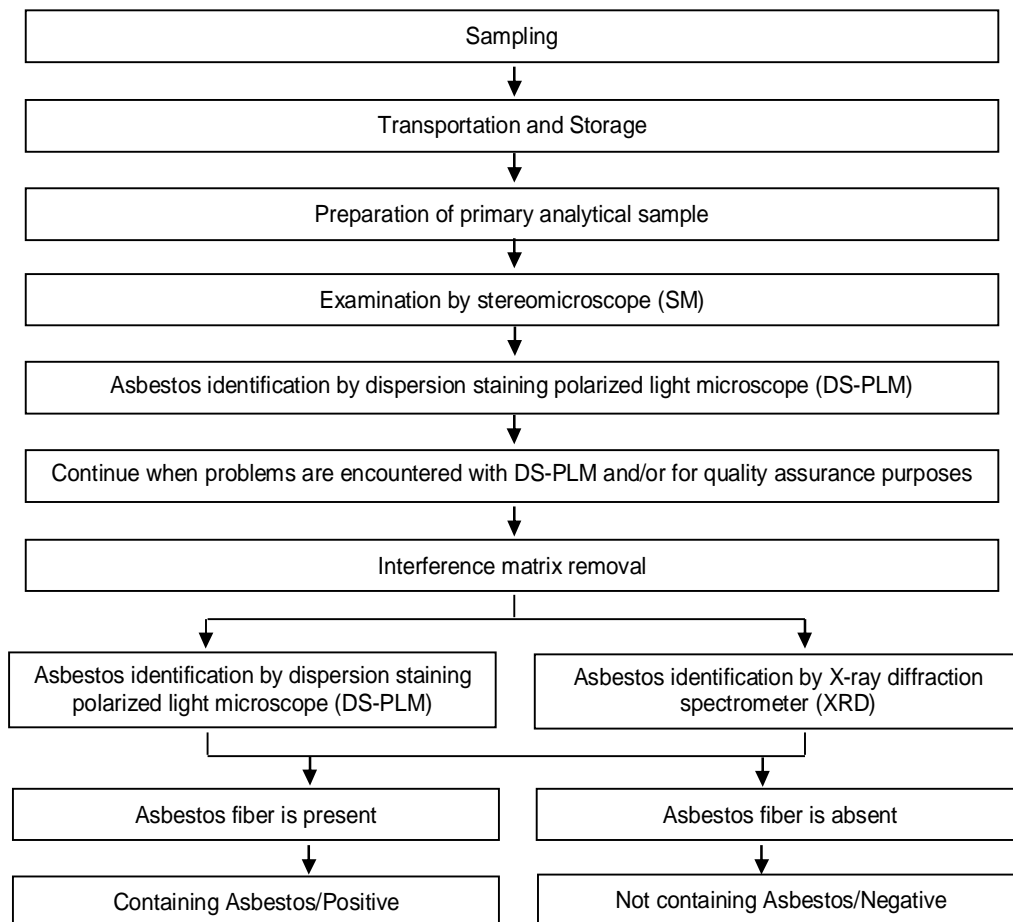


Unless otherwise stated the results shown in this test report refer only to the sample(s) tested. This test report cannot be reproduced, except in full, without prior written permission of the Company. 除非另有說明，此報告結果僅對測試之樣品負責。本報告未經本公司書面許可，不可部分複製。  
 This document is issued by the Company subject to its General Conditions of Service printed overleaf, available on request or accessible at [www.sgs.com/terms\\_and\\_conditions.htm](http://www.sgs.com/terms_and_conditions.htm) and, for electronic format documents, subject to Terms and Conditions for Electronic Documents at [www.sgs.com/terms\\_e-document.htm](http://www.sgs.com/terms_e-document.htm). Attention is drawn to the limitation of liability, indemnification and jurisdiction issues defined therein. Any holder of this document is advised that information contained hereon reflects the Company's findings at the time of its intervention only and within the limits of Client's instructions, if any. The Company's sole responsibility is to its Client and this document does not exonerate parties to a transaction from exercising all their rights and obligations under the transaction documents. This document cannot be reproduced except in full, without prior written approval of the Company. Any unauthorized alteration, forgery or falsification of the content or appearance of this document is unlawful and offenders may be prosecuted to the fullest extent of the law.

### Analysis flow chart for determination of Asbestos

- Technician: Victor Kao
- Supervisor: Wendy Wei

#### **【Reference method: EPA 600/R-93/116】**



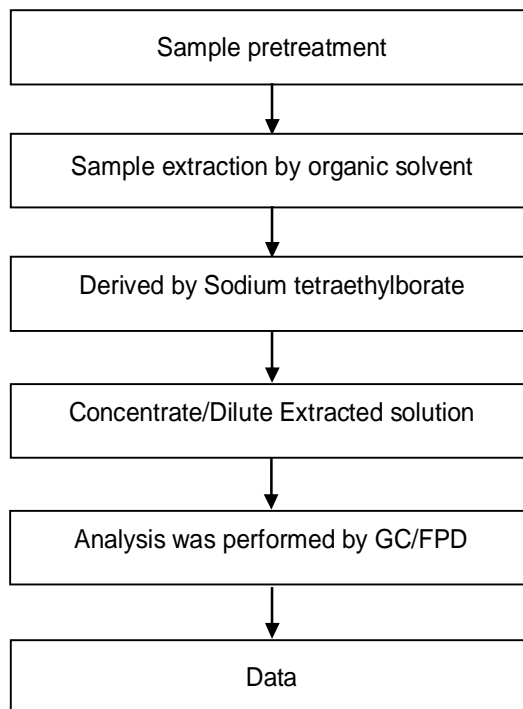
Unless otherwise stated the results shown in this test report refer only to the sample(s) tested. This test report cannot be reproduced, except in full, without prior written permission of the Company. 除非另有說明，此報告結果僅對測試之樣品負責。本報告未經本公司書面許可，不可部分複製。  
 This document is issued by the Company subject to its General Conditions of Service printed overleaf, available on request or accessible at [www.sgs.com/terms\\_and\\_conditions.htm](http://www.sgs.com/terms_and_conditions.htm) and, for electronic format documents, subject to Terms and Conditions for Electronic Documents at [www.sgs.com/terms\\_e-document.htm](http://www.sgs.com/terms_e-document.htm). Attention is drawn to the limitation of liability, indemnification and jurisdiction issues defined therein. Any holder of this document is advised that information contained hereon reflects the Company's findings at the time of its intervention only and within the limits of Client's instructions, if any. The Company's sole responsibility is to its Client and this document does not exonerate parties to a transaction from exercising all their rights and obligations under the transaction documents. This document cannot be reproduced except in full, without prior written approval of the Company. Any unauthorized alteration, forgery or falsification of the content or appearance of this document is unlawful and offenders may be prosecuted to the fullest extent of the law.

FORMOSA PLASTICS CORPORATION

NO. 100, SHUI-GUAN RD., JEN-WU DIST., KAOHSIUNG CITY, TAIWAN (R.O.C.)

### Analytical flow chart of Organic-Tin content

- Technician: Dorothy Chen
- Supervisor: Ray Chang



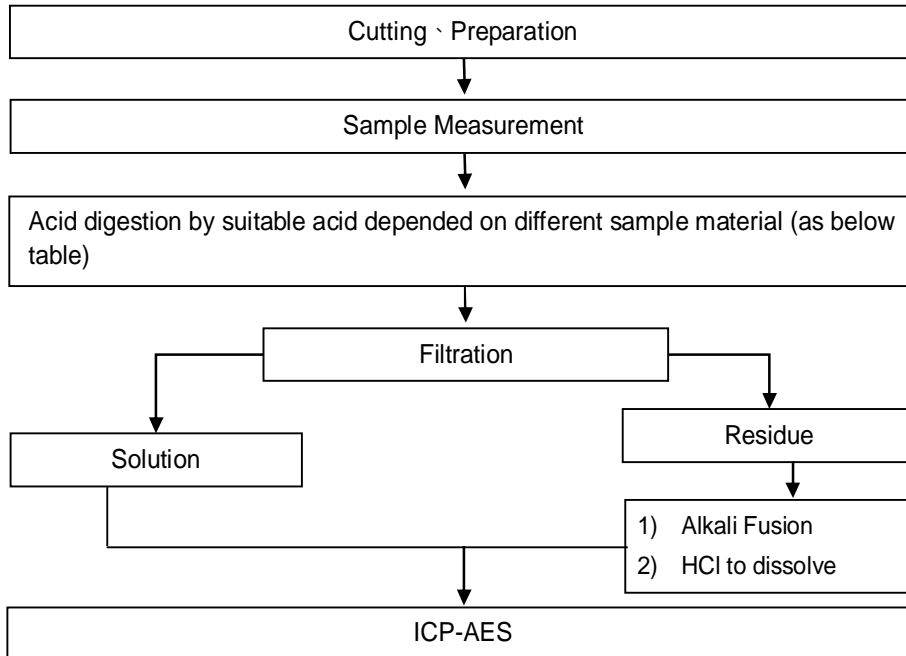
Unless otherwise stated the results shown in this test report refer only to the sample(s) tested. This test report cannot be reproduced, except in full, without prior written permission of the Company. 除非另有說明，此報告結果僅對測試之樣品負責。本報告未經本公司書面許可，不可部分複製。  
 This document is issued by the Company subject to its General Conditions of Service printed overleaf, available on request or accessible at [www.sgs.com/terms\\_and\\_conditions.htm](http://www.sgs.com/terms_and_conditions.htm) and, for electronic format documents, subject to Terms and Conditions for Electronic Documents at [www.sgs.com/terms\\_e-document.htm](http://www.sgs.com/terms_e-document.htm). Attention is drawn to the limitation of liability, indemnification and jurisdiction issues defined therein. Any holder of this document is advised that information contained hereon reflects the Company's findings at the time of its intervention only and within the limits of Client's instructions, if any. The Company's sole responsibility is to its Client and this document does not exonerate parties to a transaction from exercising all their rights and obligations under the transaction documents. This document cannot be reproduced except in full, without prior written approval of the Company. Any unauthorized alteration, forgery or falsification of the content or appearance of this document is unlawful and offenders may be prosecuted to the fullest extent of the law.

FORMOSA PLASTICS CORPORATION  
 NO. 100, SHUI-GUAN RD., JEN-WU DIST., KAOHSIUNG CITY, TAIWAN (R.O.C.)

### Flow Chart of digestion for the elements analysis performed by ICP-AES

These samples were dissolved totally by pre-conditioning method according to below flow chart.

- Technician : Jony Liu
- Supervisor: Ray Chang



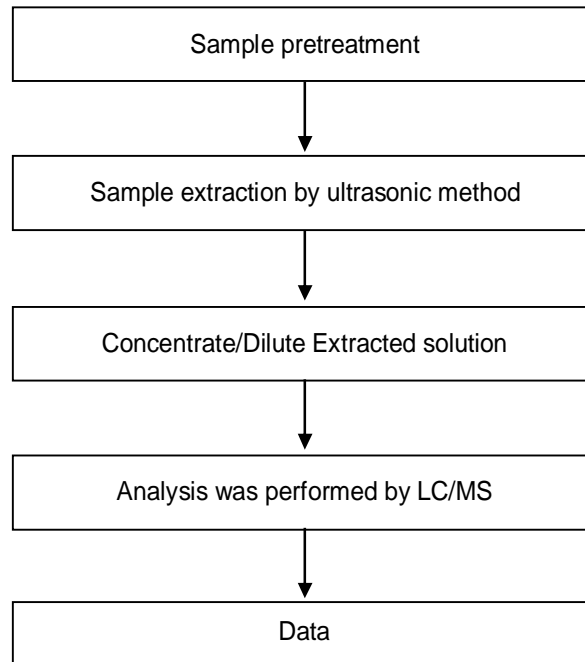
Steel, copper, aluminum, solder	Aqua regia, HNO <sub>3</sub> , HCl, HF, H <sub>2</sub> O <sub>2</sub>
Glass	HNO <sub>3</sub> /HF
Gold, platinum, palladium, ceramic	Aqua regia
Silver	HNO <sub>3</sub>
Plastic	H <sub>2</sub> SO <sub>4</sub> , H <sub>2</sub> O <sub>2</sub> , HNO <sub>3</sub> , HCl
Others	Any acid to total digestion

Unless otherwise stated the results shown in this test report refer only to the sample(s) tested. This test report cannot be reproduced, except in full, without prior written permission of the Company. 除非另有說明，此報告結果僅對測試之樣品負責。本報告未經本公司書面許可，不可部分複製。  
 This document is issued by the Company subject to its General Conditions of Service printed overleaf, available on request or accessible at [www.sgs.com/terms\\_and\\_conditions.htm](http://www.sgs.com/terms_and_conditions.htm) and, for electronic format documents, subject to Terms and Conditions for Electronic Documents at [www.sgs.com/terms\\_e-document.htm](http://www.sgs.com/terms_e-document.htm). Attention is drawn to the limitation of liability, indemnification and jurisdiction issues defined therein. Any holder of this document is advised that information contained hereon reflects the Company's findings at the time of its intervention only and within the limits of Client's instructions, if any. The Company's sole responsibility is to its Client and this document does not exonerate parties to a transaction from exercising all their rights and obligations under the transaction documents. This document cannot be reproduced except in full, without prior written approval of the Company. Any unauthorized alteration, forgery or falsification of the content or appearance of this document is unlawful and offenders may be prosecuted to the fullest extent of the law.



### Analytical flow chart of PFOA/PFOS content

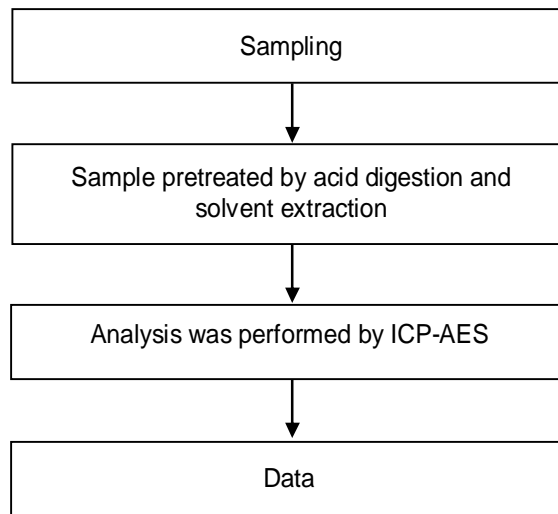
- Technician : Ginny Huang
- Supervisor: Ray Chang



Unless otherwise stated the results shown in this test report refer only to the sample(s) tested. This test report cannot be reproduced, except in full, without prior written permission of the Company. 除非另有說明，此報告結果僅對測試之樣品負責。本報告未經本公司書面許可，不可部分複製。  
 This document is issued by the Company subject to its General Conditions of Service printed overleaf, available on request or accessible at [www.sgs.com/terms\\_and\\_conditions.htm](http://www.sgs.com/terms_and_conditions.htm) and, for electronic format documents, subject to Terms and Conditions for Electronic Documents at [www.sgs.com/terms\\_e-document.htm](http://www.sgs.com/terms_e-document.htm). Attention is drawn to the limitation of liability, indemnification and jurisdiction issues defined therein. Any holder of this document is advised that information contained hereon reflects the Company's findings at the time of its intervention only and within the limits of Client's instructions, if any. The Company's sole responsibility is to its Client and this document does not exonerate parties to a transaction from exercising all their rights and obligations under the transaction documents. This document cannot be reproduced except in full, without prior written approval of the Company. Any unauthorized alteration, forgery or falsification of the content or appearance of this document is unlawful and offenders may be prosecuted to the fullest extent of the law.

### Analytical flow chart of Cobalt dichloride

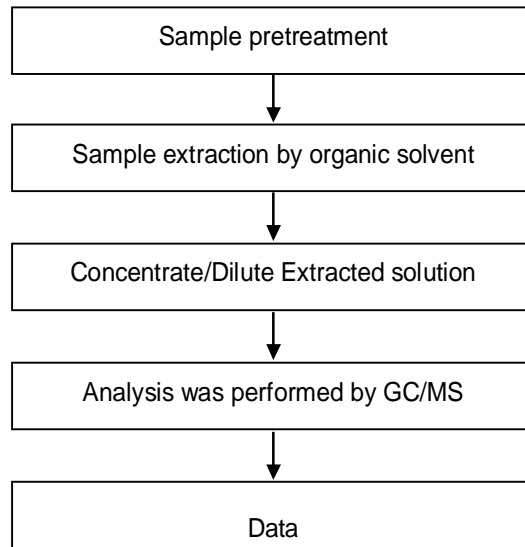
- Technician: Jony Liu
- Supervisor: Ray Chang



Unless otherwise stated the results shown in this test report refer only to the sample(s) tested. This test report cannot be reproduced, except in full, without prior written permission of the Company. 除非另有說明，此報告結果僅對測試之樣品負責。本報告未經本公司書面許可，不可部分複製。  
 This document is issued by the Company subject to its General Conditions of Service printed overleaf, available on request or accessible at [www.sgs.com/terms\\_and\\_conditions.htm](http://www.sgs.com/terms_and_conditions.htm) and, for electronic format documents, subject to Terms and Conditions for Electronic Documents at [www.sgs.com/terms\\_e-document.htm](http://www.sgs.com/terms_e-document.htm). Attention is drawn to the limitation of liability, indemnification and jurisdiction issues defined therein. Any holder of this document is advised that information contained hereon reflects the Company's findings at the time of its intervention only and within the limits of Client's instructions, if any. The Company's sole responsibility is to its Client and this document does not exonerate parties to a transaction from exercising all their rights and obligations under the transaction documents. This document cannot be reproduced except in full, without prior written approval of the Company. Any unauthorized alteration, forgery or falsification of the content or appearance of this document is unlawful and offenders may be prosecuted to the fullest extent of the law.

### Analytical flow chart of Dimethyl Fumarate content

- Technician: Dorothy Chen
- Supervisor: Ray Chang



Unless otherwise stated the results shown in this test report refer only to the sample(s) tested. This test report cannot be reproduced, except in full, without prior written permission of the Company. 除非另有說明，此報告結果僅對測試之樣品負責。本報告未經本公司書面許可，不可部分複製。  
 This document is issued by the Company subject to its General Conditions of Service printed overleaf, available on request or accessible at [www.sgs.com/terms\\_and\\_conditions.htm](http://www.sgs.com/terms_and_conditions.htm) and, for electronic format documents, subject to Terms and Conditions for Electronic Documents at [www.sgs.com/terms\\_e-document.htm](http://www.sgs.com/terms_e-document.htm). Attention is drawn to the limitation of liability, indemnification and jurisdiction issues defined therein. Any holder of this document is advised that information contained hereon reflects the Company's findings at the time of its intervention only and within the limits of Client's instructions, if any. The Company's sole responsibility is to its Client and this document does not exonerate parties to a transaction from exercising all their rights and obligations under the transaction documents. This document cannot be reproduced except in full, without prior written approval of the Company. Any unauthorized alteration, forgery or falsification of the content or appearance of this document is unlawful and offenders may be prosecuted to the fullest extent of the law.

# Test Report

No. : KA/2019/11488

Date : 2019/01/30

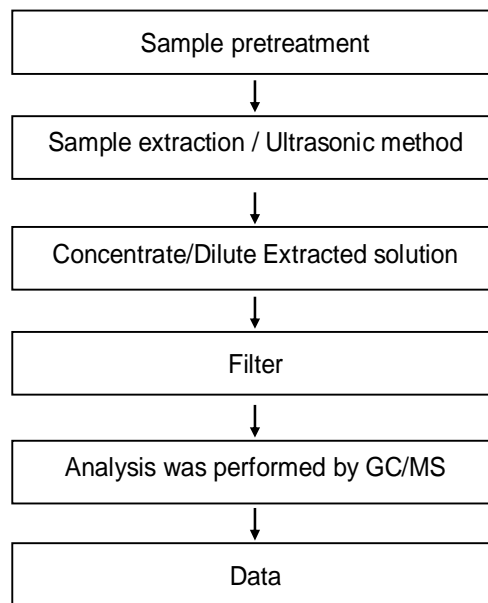
Page: 30 of 34

FORMOSA PLASTICS CORPORATION

NO. 100, SHUI-GUAN RD., JEN-WU DIST., KAOHSIUNG CITY, TAIWAN (R.O.C.)

## HBCDD analytical flow chart

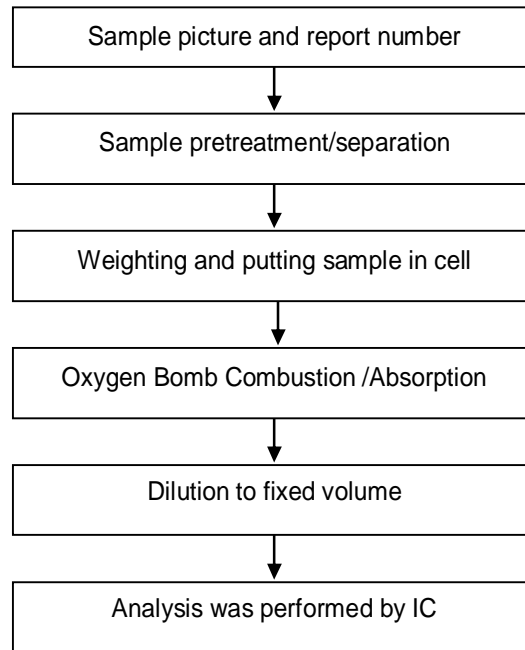
- Technician : Dorothy Chen
- Supervisor: Ray Chang



Unless otherwise stated the results shown in this test report refer only to the sample(s) tested. This test report cannot be reproduced, except in full, without prior written permission of the Company. 除非另有說明，此報告結果僅對測試之樣品負責。本報告未經本公司書面許可，不可部分複製。  
 This document is issued by the Company subject to its General Conditions of Service printed overleaf, available on request or accessible at [www.sgs.com/terms\\_and\\_conditions.htm](http://www.sgs.com/terms_and_conditions.htm) and, for electronic format documents, subject to Terms and Conditions for Electronic Documents at [www.sgs.com/terms\\_e-document.htm](http://www.sgs.com/terms_e-document.htm). Attention is drawn to the limitation of liability, indemnification and jurisdiction issues defined therein. Any holder of this document is advised that information contained hereon reflects the Company's findings at the time of its intervention only and within the limits of Client's instructions, if any. The Company's sole responsibility is to its Client and this document does not exonerate parties to a transaction from exercising all their rights and obligations under the transaction documents. This document cannot be reproduced except in full, without prior written approval of the Company. Any unauthorized alteration, forgery or falsification of the content or appearance of this document is unlawful and offenders may be prosecuted to the fullest extent of the law.

### Analytical flow chart of halogen content

- Technician : Jean Hung
- Supervisor: Ray Chang

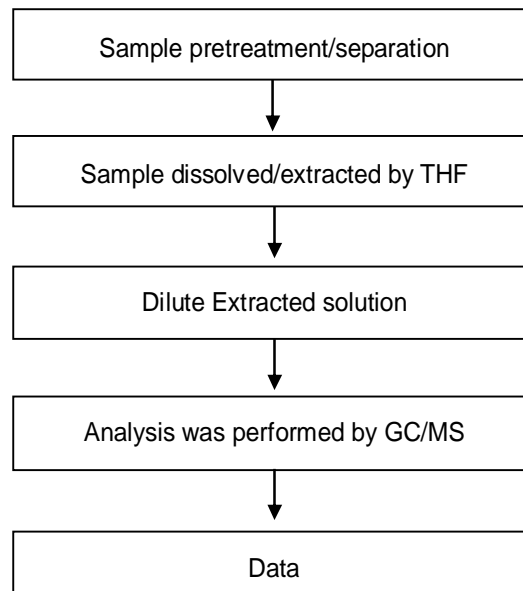


Unless otherwise stated the results shown in this test report refer only to the sample(s) tested. This test report cannot be reproduced, except in full, without prior written permission of the Company. 除非另有說明，此報告結果僅對測試之樣品負責。本報告未經本公司書面許可，不可部分複製。  
 This document is issued by the Company subject to its General Conditions of Service printed overleaf, available on request or accessible at [www.sgs.com/terms\\_and\\_conditions.htm](http://www.sgs.com/terms_and_conditions.htm) and, for electronic format documents, subject to Terms and Conditions for Electronic Documents at [www.sgs.com/terms\\_e-document.htm](http://www.sgs.com/terms_e-document.htm). Attention is drawn to the limitation of liability, indemnification and jurisdiction issues defined therein. Any holder of this document is advised that information contained hereon reflects the Company's findings at the time of its intervention only and within the limits of Client's instructions, if any. The Company's sole responsibility is to its Client and this document does not exonerate parties to a transaction from exercising all their rights and obligations under the transaction documents. This document cannot be reproduced except in full, without prior written approval of the Company. Any unauthorized alteration, forgery or falsification of the content or appearance of this document is unlawful and offenders may be prosecuted to the fullest extent of the law.

### Analytical flow chart of phthalate content

- Technician: Dorothy Chen
- Supervisor: Ray Chang

**【Test method: IEC 62321-8】**



Unless otherwise stated the results shown in this test report refer only to the sample(s) tested. This test report cannot be reproduced, except in full, without prior written permission of the Company. 除非另有說明，此報告結果僅對測試之樣品負責。本報告未經本公司書面許可，不可部分複製。  
 This document is issued by the Company subject to its General Conditions of Service printed overleaf, available on request or accessible at [www.sgs.com/terms\\_and\\_conditions.htm](http://www.sgs.com/terms_and_conditions.htm) and, for electronic format documents, subject to Terms and Conditions for Electronic Documents at [www.sgs.com/terms\\_e-document.htm](http://www.sgs.com/terms_e-document.htm). Attention is drawn to the limitation of liability, indemnification and jurisdiction issues defined therein. Any holder of this document is advised that information contained hereon reflects the Company's findings at the time of its intervention only and within the limits of Client's instructions, if any. The Company's sole responsibility is to its Client and this document does not exonerate parties to a transaction from exercising all their rights and obligations under the transaction documents. This document cannot be reproduced except in full, without prior written approval of the Company. Any unauthorized alteration, forgery or falsification of the content or appearance of this document is unlawful and offenders may be prosecuted to the fullest extent of the law.

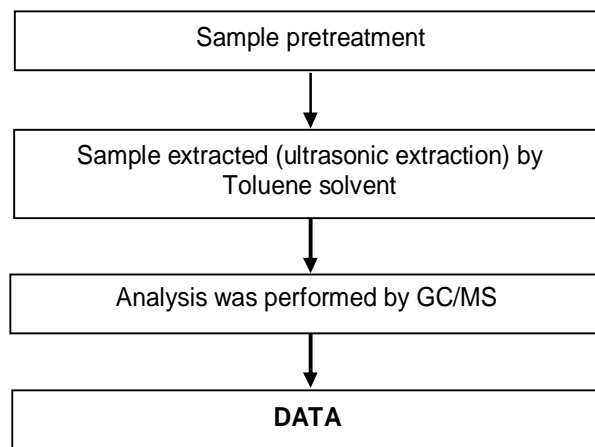


FORMOSA PLASTICS CORPORATION

NO. 100, SHUI-GUAN RD., JEN-WU DIST., KAOHSIUNG CITY, TAIWAN (R.O.C.)

## PAHs (PolyAromaticHydrocarbons) analytical flow chart

- Technician : Dorothy Chen
- Supervisor : Ray Chang



Unless otherwise stated the results shown in this test report refer only to the sample(s) tested. This test report cannot be reproduced, except in full, without prior written permission of the Company. 除非另有說明，此報告結果僅對測試之樣品負責。本報告未經本公司書面許可，不可部分複製。  
 This document is issued by the Company subject to its General Conditions of Service printed overleaf, available on request or accessible at [www.sgs.com/terms\\_and\\_conditions.htm](http://www.sgs.com/terms_and_conditions.htm) and, for electronic format documents, subject to Terms and Conditions for Electronic Documents at [www.sgs.com/terms\\_e-document.htm](http://www.sgs.com/terms_e-document.htm). Attention is drawn to the limitation of liability, indemnification and jurisdiction issues defined therein. Any holder of this document is advised that information contained hereon reflects the Company's findings at the time of its intervention only and within the limits of Client's instructions, if any. The Company's sole responsibility is to its Client and this document does not exonerate parties to a transaction from exercising all their rights and obligations under the transaction documents. This document cannot be reproduced except in full, without prior written approval of the Company. Any unauthorized alteration, forgery or falsification of the content or appearance of this document is unlawful and offenders may be prosecuted to the fullest extent of the law.

## Test Report

No. : KA/2019/11488

Date : 2019/01/30

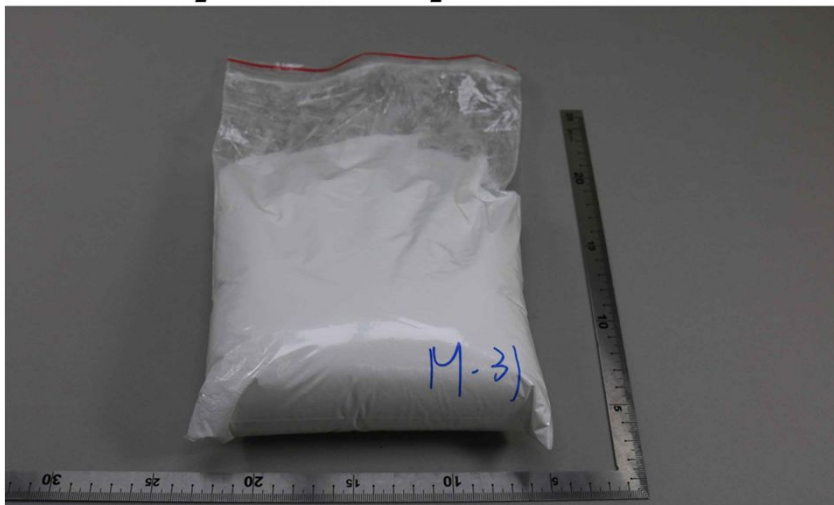
Page: 34 of 34

FORMOSA PLASTICS CORPORATION

NO. 100, SHUI-GUAN RD., JEN-WU DIST., KAOHSIUNG CITY, TAIWAN (R.O.C.)

\* The tested sample / part is marked by an arrow if it's shown on the photo. \*

# KA/2019/11488



\*\* End of Report \*\*

Unless otherwise stated the results shown in this test report refer only to the sample(s) tested. This test report cannot be reproduced, except in full, without prior written permission of the Company. 除非另有說明，此報告結果僅對測試之樣品負責。本報告未經本公司書面許可，不可部分複製。  
This document is issued by the Company subject to its General Conditions of Service printed overleaf, available on request or accessible at [www.sgs.com/terms\\_and\\_conditions.htm](http://www.sgs.com/terms_and_conditions.htm) and, for electronic format documents, subject to Terms and Conditions for Electronic Documents at [www.sgs.com/terms\\_e-document.htm](http://www.sgs.com/terms_e-document.htm). Attention is drawn to the limitation of liability, indemnification and jurisdiction issues defined therein. Any holder of this document is advised that information contained hereon reflects the Company's findings at the time of its intervention only and within the limits of Client's instructions, if any. The Company's sole responsibility is to its Client and this document does not exonerate parties to a transaction from exercising all their rights and obligations under the transaction documents. This document cannot be reproduced except in full, without prior written approval of the Company. Any unauthorized alteration, forgery or falsification of the content or appearance of this document is unlawful and offenders may be prosecuted to the fullest extent of the law.