

# Test Report

Report No.: SFW21100835

Report Issue Date: 2021/01/15

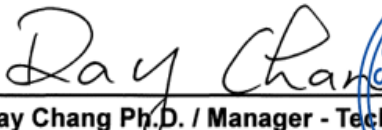
Page: 1 of 6

FORMOSA PLASTICS CORPORATION  
NO. 100, SHUI-GUAN RD., JEN-WU DIST., KAOHSIUNG CITY, TAIWAN (R.O.C.)

The following sample(s) was/were submitted and identified by/on behalf of the applicant as:

Sample description : PVC powder.  
Style/Item No. : LYS-80.  
Material component : PVC powder.  
Color : White.  
Sample receiving date : 2021/01/11.  
Testing period : 2021/01/11 - 2021/01/15.  
Sample submitted by : FORMOSA PLASTICS CORPORATION

=====  
--- Please see the next page for test result(s) ---

  
Ray Chang Ph.D. / Manager - Tech  
Signed for and on behalf of  
SGS Taiwan Limited  
Chemical Laboratory-Kaohsiung



This document is issued by the Company subject to its General Conditions of Service printed overleaf, available on request or accessible at <http://www.sgs.com.tw/Terms-and-Conditions> and, for electronic format documents, subject to Terms and Conditions for Electronic Documents at <http://www.sgs.com.tw/Terms-and-Conditions>. Attention is drawn to the limitation of liability, indemnification and jurisdiction issues defined therein. Any holder of this document is advised that information contained hereon reflects the Company's findings at the time of its intervention only and within the limits of client's instruction, if any. The Company's sole responsibility is to its Client and this document does not exonerate parties to a transaction from exercising all their rights and obligations under the transaction documents. This document cannot be reproduced, except in full, without prior written approval of the Company. Any unauthorized alteration, forgery or falsification of the content or appearance of this document is unlawful and offenders may be prosecuted to the fullest extent of the law. Unless otherwise stated the results shown in this test report refer only to the sample(s) tested.

# Test Report

Report No.: SFW21100835

Report Issue Date: 2021/01/15

Page: 2 of 6

FORMOSA PLASTICS CORPORATION  
NO. 100, SHUI-GUAN RD., JEN-WU DIST., KAOHSIUNG CITY, TAIWAN (R.O.C.)

## Component list / List of materials

### No. Component description

1 White PVC powder

## Test result(s):

Test item(s)	Method	Unit	RL	Result
				No.1
1,2-benzenedicarboxylic acid, di-C6-10-alkyl esters; 1,2-benzenedicarboxylic acid, mixed decyl and hexyl and octyl diesters with $\geq 0.3\%$ of dihexyl phthalate ( CAS No.68515-51-5, 68648-93-1 )	With reference to EN 14372:2004. Analysis was performed by GC-MS.	mg/kg	100	n.d.
1,2-Benzenedicarboxylic acid, dihexyl ester, branched and linear ( CAS No.68515-50-4 )	With reference to EN 14372:2004. Analysis was performed by GC-MS.	mg/kg	100	n.d.
Butyl benzyl phthalate (BBP) ( CAS No.85-68-7 )	With reference to EN 14372:2004. Analysis was performed by GC-MS.	mg/kg	30	n.d.
Bis(4-methyl-2-pentyl) phthalate (BMPP) ( CAS No.146-50-9 )	With reference to EN 14372:2004. Analysis was performed by GC-MS.	mg/kg	30	n.d.
Diallyl phthalate (DAP) ( CAS No.131-17-9 )	With reference to EN 14372:2004. Analysis was performed by GC-MS.	mg/kg	30	n.d.
bis(2-n-Butoxyethyl) phthalate (DBEP) ( CAS No.117-83-9 )	With reference to EN 14372:2004. Analysis was performed by GC-MS.	mg/kg	30	n.d.
Dibutyl phthalate (DBP) ( CAS No.84-74-2 )	With reference to EN 14372:2004. Analysis was performed by GC-MS.	mg/kg	30	n.d.
Di-cyclohexyl phthalate (DCHP) ( CAS No.84-61-7 )	With reference to EN 14372:2004. Analysis was performed by GC-MS.	mg/kg	30	n.d.
Bis(2-ethylhexyl) adipate (DEHA) ( CAS No.103-23-1 )	With reference to EN 14372:2004. Analysis was performed by GC-MS.	mg/kg	30	n.d.

This document is issued by the Company subject to its General Conditions of Service printed overleaf, available on request or accessible at <http://www.sgs.com.tw/Terms-and-Conditions> and, for electronic format documents, subject to Terms and Conditions for Electronic Documents at <http://www.sgs.com.tw/Terms-and-Conditions>. Attention is drawn to the limitation of liability, indemnification and jurisdiction issues defined therein. Any holder of this document is advised that information contained hereon reflects the Company's findings at the time of its intervention only and within the limits of client's instruction, if any. The Company's sole responsibility is to its Client and this document does not exonerate parties to a transaction from exercising all their rights and obligations under the transaction documents. This document cannot be reproduced, except in full, without prior written approval of the Company. Any unauthorized alteration, forgery or falsification of the content or appearance of this document is unlawful and offenders may be prosecuted to the fullest extent of the law. Unless otherwise stated the results shown in this test report refer only to the sample(s) tested.

# Test Report

Report No.: SFW21100835

Report Issue Date: 2021/01/15

Page: 3 of 6

FORMOSA PLASTICS CORPORATION  
NO. 100, SHUI-GUAN RD., JEN-WU DIST., KAOHSIUNG CITY, TAIWAN (R.O.C.)

Test item(s)	Method	Unit	RL	Result
				No.1
Bis(2-ethylhexyl) phthalate (DEHP) ( CAS No.117-81-7 )	With reference to EN 14372:2004. Analysis was performed by GC-MS.	mg/kg	30	n.d.
Di(2-ethylhexyl) terephthalate (DEHT) ( CAS No.6422-86-2 )	With reference to EN 14372:2004. Analysis was performed by GC-MS.	mg/kg	30	n.d.
Diethyl phthalate (DEP) ( CAS No.84-66-2 )	With reference to EN 14372:2004. Analysis was performed by GC-MS.	mg/kg	30	n.d.
1,2-Benzenedicarboxylic acid, di-C7-11-branched and linear alkyl esters (DHNUP) ( CAS No.68515-42-4 )	With reference to EN 14372:2004. Analysis was performed by GC-MS.	mg/kg	100	n.d.
Di-isobutyl phthalate (DIBP) ( CAS No.84-69-5 )	With reference to EN 14372:2004. Analysis was performed by GC-MS.	mg/kg	30	n.d.
Di-iso-decyl phthalate (DIDP) ( CAS No.26761-40-0; 68515-49-1 )	With reference to EN 14372:2004. Analysis was performed by GC-MS.	mg/kg	100	n.d.
1,2-Benzenedicarboxylic acid, di-C6-8-branched alkyl esters, C7-rich (DIHP) ( CAS No.71888-89-6 )	With reference to EN 14372:2004. Analysis was performed by GC-MS.	mg/kg	100	n.d.
Diisohexyl phthalate (DIHxP) ( CAS No.71850-09-4 )	With reference to EN 14372:2004. Analysis was performed by GC-MS.	mg/kg	100	n.d.
Diisononyl adipate ( CAS No.33703-08-1 )	With reference to EN 14372:2004. Analysis was performed by GC-MS.	mg/kg	100	n.d.
Di-isononyl phthalate (DINP) ( CAS No.28553-12-0; 68515-48-0 )	With reference to EN 14372:2004. Analysis was performed by GC-MS.	mg/kg	100	n.d.
Diisooctyl phthalate (DIOP) ( CAS No.27554-26-3 )	With reference to EN 14372:2004. Analysis was performed by GC-MS.	mg/kg	100	n.d.

This document is issued by the Company subject to its General Conditions of Service printed overleaf, available on request or accessible at <http://www.sgs.com.tw/Terms-and-Conditions> and, for electronic format documents, subject to Terms and Conditions for Electronic Documents at <http://www.sgs.com.tw/Terms-and-Conditions>. Attention is drawn to the limitation of liability, indemnification and jurisdiction issues defined therein. Any holder of this document is advised that information contained hereon reflects the Company's findings at the time of its intervention only and within the limits of client's instruction, if any. The Company's sole responsibility is to its Client and this document does not exonerate parties to a transaction from exercising all their rights and obligations under the transaction documents. This document cannot be reproduced, except in full, without prior written approval of the Company. Any unauthorized alteration, forgery or falsification of the content or appearance of this document is unlawful and offenders may be prosecuted to the fullest extent of the law. Unless otherwise stated the results shown in this test report refer only to the sample(s) tested.

# Test Report

Report No.: SFW21100835

Report Issue Date: 2021/01/15

Page: 4 of 6

FORMOSA PLASTICS CORPORATION  
NO. 100, SHUI-GUAN RD., JEN-WU DIST., KAOHSIUNG CITY, TAIWAN (R.O.C.)

Test item(s)	Method	Unit	RL	Result
				No.1
Diisopentyl phthalate (DIPP) (CAS No.605-50-5)	With reference to EN 14372:2004. Analysis was performed by GC-MS.	mg/kg	30	n.d.
Bis-(2-methoxyethyl) phthalate (DMEP) (CAS No.117-82-8)	With reference to EN 14372:2004. Analysis was performed by GC-MS.	mg/kg	30	n.d.
Dimethyl phthalate (DMP) (CAS No.131-11-3)	With reference to EN 14372:2004. Analysis was performed by GC-MS.	mg/kg	30	n.d.
Di-n-decylphthalate (CAS No.84-77-5)	With reference to EN 14372:2004. Analysis was performed by GC-MS.	mg/kg	30	n.d.
Di-n-hexyl phthalate (DNHP) (CAS No.84-75-3)	With reference to EN 14372:2004. Analysis was performed by GC-MS.	mg/kg	30	n.d.
Di-n-nonyl phthalate (DNNP) (CAS No.84-76-4)	With reference to EN 14372:2004. Analysis was performed by GC-MS.	mg/kg	30	n.d.
Di-n-octyl phthalate (DNOP) (CAS No.117-84-0)	With reference to EN 14372:2004. Analysis was performed by GC-MS.	mg/kg	30	n.d.
Diphenyl phthalate (DPhP) (CAS No.84-62-8)	With reference to EN 14372:2004. Analysis was performed by GC-MS.	mg/kg	30	n.d.
Di-pentyl phthalate (DPP) (CAS No.131-18-0)	With reference to EN 14372:2004. Analysis was performed by GC-MS.	mg/kg	30	n.d.
Di(2-propylheptyl) phthalate (DPrHP) (CAS No.53306-54-0)	With reference to EN 14372:2004. Analysis was performed by GC-MS.	mg/kg	30	n.d.
Dipropyl phthalate (DPrP) (CAS No.131-16-8)	With reference to EN 14372:2004. Analysis was performed by GC-MS.	mg/kg	30	n.d.
Diundecyl phthalate (DUP) (CAS No.3648-20-2)	With reference to EN 14372:2004. Analysis was performed by GC-MS.	mg/kg	100	n.d.
N-pentyl iso-pentyl phthalate (NPIPP) (CAS No.776297-69-9)	With reference to EN 14372:2004. Analysis was performed by GC-MS.	mg/kg	30	n.d.

This document is issued by the Company subject to its General Conditions of Service printed overleaf, available on request or accessible at <http://www.sgs.com.tw/Terms-and-Conditions> and, for electronic format documents, subject to Terms and Conditions for Electronic Documents at <http://www.sgs.com.tw/Terms-and-Conditions>. Attention is drawn to the limitation of liability, indemnification and jurisdiction issues defined therein. Any holder of this document is advised that information contained hereon reflects the Company's findings at the time of its intervention only and within the limits of client's instruction, if any. The Company's sole responsibility is to its Client and this document does not exonerate parties to a transaction from exercising all their rights and obligations under the transaction documents. This document cannot be reproduced, except in full, without prior written approval of the Company. Any unauthorized alteration, forgery or falsification of the content or appearance of this document is unlawful and offenders may be prosecuted to the fullest extent of the law. Unless otherwise stated the results shown in this test report refer only to the sample(s) tested.

# Test Report

Report No.: SFW21100835

Report Issue Date: 2021/01/15

Page: 5 of 6

FORMOSA PLASTICS CORPORATION  
NO. 100, SHUI-GUAN RD., JEN-WU DIST., KAOHSIUNG CITY, TAIWAN (R.O.C.)

Test item(s)	Method	Unit	RL	Result
				No.1
1,2-Benzenedicarboxylic acid, dipentylester, branched and linear ( CAS No.84777-06-0 )	With reference to EN 14372:2004. Analysis was performed by GC-MS.	mg/kg	30	n.d.
Dibenzyl phthalate ( CAS No.523-31-9 )	With reference to EN 14372:2004. Analysis was performed by GC-MS.	mg/kg	30	n.d.
Bis(2-ethoxyethyl) phthalate (DEEP) ( CAS No.605-54-9 )	With reference to EN 14372:2004. Analysis was performed by GC-MS.	mg/kg	30	n.d.
Diheptyl phthalate (DHpP) ( CAS No.3648-21-3 )	With reference to EN 14372:2004. Analysis was performed by GC-MS.	mg/kg	30	n.d.
Dimethyl terephthalate (DMTP) ( CAS No.120-61-6 )	With reference to EN 14372:2004. Analysis was performed by GC-MS.	mg/kg	30	n.d.
Monobutyl phthalate (MBP) ( CAS No.131-70-4 )	With reference to EN 14372:2004. Analysis was performed by GC-MS.	mg/kg	500	n.d.
Mono(2-ethyl hexyl) ester (MEHP) ( CAS No.4376-20-9 )	With reference to EN 14372:2004. Analysis was performed by GC-MS.	mg/kg	30	n.d.
Undecyl dodecyl phthalate ( CAS No.68515-47-9 )	With reference to EN 14372:2004. Analysis was performed by GC-MS.	mg/kg	250	n.d.

**Note:**

- mg/kg = ppm
- RL = Reporting Limit
- n.d. = Not Detected

This document is issued by the Company subject to its General Conditions of Service printed overleaf, available on request or accessible at <http://www.sgs.com.tw/Terms-and-Conditions> and, for electronic format documents, subject to Terms and Conditions for Electronic Documents at <http://www.sgs.com.tw/Terms-and-Conditions>. Attention is drawn to the limitation of liability, indemnification and jurisdiction issues defined therein. Any holder of this document is advised that information contained hereon reflects the Company's findings at the time of its intervention only and within the limits of client's instruction, if any. The Company's sole responsibility is to its Client and this document does not exonerate parties to a transaction from exercising all their rights and obligations under the transaction documents. This document cannot be reproduced, except in full, without prior written approval of the Company. Any unauthorized alteration, forgery or falsification of the content or appearance of this document is unlawful and offenders may be prosecuted to the fullest extent of the law. Unless otherwise stated the results shown in this test report refer only to the sample(s) tested.

## Test Report

Report No.: SFW21100835

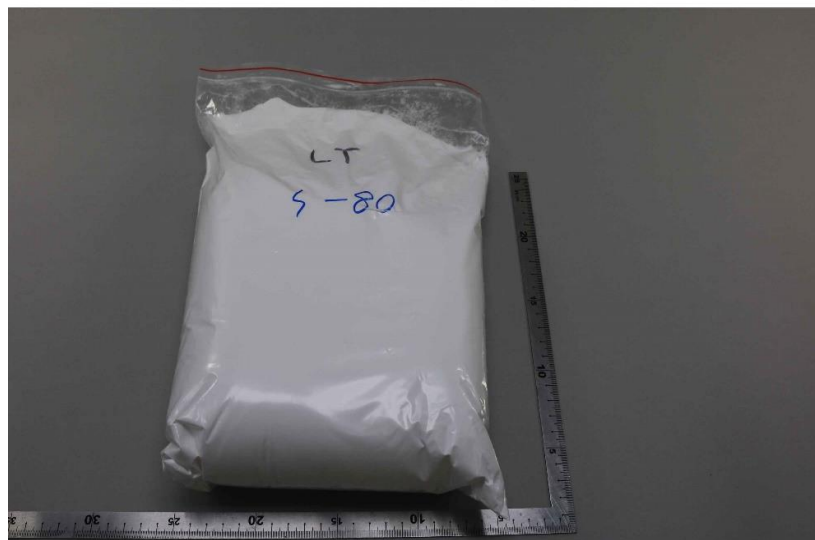
Report Issue Date: 2021/01/15

Page: 6 of 6

FORMOSA PLASTICS CORPORATION  
NO. 100, SHUI-GUAN RD., JEN-WU DIST., KAOHSIUNG CITY, TAIWAN (R.O.C.)

\* The tested sample / part is marked by an arrow if it's shown on the photo. \*

### SFW21100835



\*\* End of report \*\*

This document is issued by the Company subject to its General Conditions of Service printed overleaf, available on request or accessible at <http://www.sgs.com.tw/Terms-and-Conditions> and, for electronic format documents, subject to Terms and Conditions for Electronic Documents at <http://www.sgs.com.tw/Terms-and-Conditions>. Attention is drawn to the limitation of liability, indemnification and jurisdiction issues defined therein. Any holder of this document is advised that information contained hereon reflects the Company's findings at the time of its intervention only and within the limits of client's instruction, if any. The Company's sole responsibility is to its Client and this document does not exonerate parties to a transaction from exercising all their rights and obligations under the transaction documents. This document cannot be reproduced, except in full, without prior written approval of the Company. Any unauthorized alteration, forgery or falsification of the content or appearance of this document is unlawful and offenders may be prosecuted to the fullest extent of the law. Unless otherwise stated the results shown in this test report refer only to the sample(s) tested.