

## Test Report

No. : KU/2018/60052

Date : 2018/07/09

Page: 1 of 4

FORMOSA PLASTICS CORPORATION

NO. 1, SHIHUA 1ST RD., LINYUAN DISTRICT, KAOHSIUNG CITY 832, TAIWAN (R.O.C.)

### The following sample(s) was/were submitted and identified by/on behalf of the applicant as :

Sample Submitted By : FORMOSA PLASTICS CORPORATION  
Sample Description : POLYPROPYLENE TERPOLYMER  
Style/Item No. : 5018,5020,5030,5050,5050M,5050R,5050S,5060  
Sample Material : 100%聚丙烯共聚物  
Sample Receiving Date : 2018/06/20  
Testing Period : 2018/06/20 TO 2018/07/09

=====  
**Test Requested** : As specified by client, the sample(s) was/were tested with reference to Commission Regulation (EU) No. 10/2011 with amendments and hence Article 3 of European Regulation No. 1935/2004. Please refer to result table for testing item(s).

**Test Result(s)** : Please refer to following pages.

*Ray Chang*

Ray Chang Ph.D. Manager - Techn  
Signed for and on behalf of  
SGS Taiwan Limited



# Test Report

No. : KU/2018/60052

Date : 2018/07/09

Page: 2 of 4

FORMOSA PLASTICS CORPORATION

NO. 1, SHIHUA 1ST RD., LINYUAN DISTRICT, KAOHSIUNG CITY 832, TAIWAN (R.O.C.)

## Test Result(s)

PART NAME No.1 : WHITE PLASTIC SHEET

**PASS**

Test Item(s)	Unit	Method	MDL	Result	Limit
				No.1	
Overall migration (3% Acetic Acid)	mg/dm <sup>2</sup>	With reference to EN 1186 (2002). (40°C for 10 days)	3.0	n.d.	10
Substitute Test (95% ethanol)	mg/dm <sup>2</sup>		3.0	3.47	10
Substitute Test (Isooctane)	mg/dm <sup>2</sup>	With reference to EN 1186 (2002). (20°C for 2 days)	3.0	11.1	10
Barium(Ba)	mg/kg	With reference to EN 13130-1 (2004). Analysis was performed by ICP-AES. (3% Acetic acid, 40°C, 10 days)	0.25	n.d.	1
Cobalt(Co)	mg/kg		0.01	n.d.	0.05
Copper(Cu)	mg/kg		0.25	n.d.	5
Iron(Fe)	mg/kg		0.25	n.d.	48
Lithium(Li)	mg/kg		0.5	n.d.	0.6
Manganese(Mn)	mg/kg		0.25	n.d.	0.6
Zinc(Zn)	mg/kg		0.5	n.d.	5
Aluminum (Al)	mg/kg		0.25	n.d.	1
Nickel (Ni)	mg/kg	With reference to EN 13130-1 (2004). Analysis was performed by ICP-MS. (3% acetic acid, 40°C, 10 days)	0.01	n.d.	0.02
Specific migration of Primary Aromatic Amine (PAA)	mg/kg	With reference to EN 13130-1 (2004) and BfR recommendation XXI. Analysis was performed by UV-vis Spectrophotometer. (3% acetic acid, 40°C, 10 days)	0.002	n.d.	0.01 (▲1)

Unless otherwise stated the results shown in this test report refer only to the sample(s) tested. This test report cannot be reproduced, except in full, without prior written permission of the Company. 除非另有說明，此報告結果僅對測試之樣品負責。本報告未經本公司書面許可，不可部分複製。  
 This document is issued by the Company subject to its General Conditions of Service printed overleaf, available on request or accessible at [www.sgs.com/terms\\_and\\_conditions.htm](http://www.sgs.com/terms_and_conditions.htm) and, for electronic format documents, subject to Terms and Conditions for Electronic Documents at [www.sgs.com/terms\\_e-document.htm](http://www.sgs.com/terms_e-document.htm). Attention is drawn to the limitation of liability, indemnification and jurisdiction issues defined therein. Any holder of this document is advised that information contained hereon reflects the Company's findings at the time of its intervention only and within the limits of Client's instructions, if any. The Company's sole responsibility is to its Client and this document does not exonerate parties to a transaction from exercising all their rights and obligations under the transaction documents. This document cannot be reproduced except in full, without prior written approval of the Company. Any unauthorized alteration, forgery or falsification of the content or appearance of this document is unlawful and offenders may be prosecuted to the fullest extent of the law.

# Test Report

No. : KU/2018/60052

Date : 2018/07/09

Page: 3 of 4

FORMOSA PLASTICS CORPORATION

NO. 1, SHIHUA 1ST RD., LINYUAN DISTRICT, KAOHSIUNG CITY 832, TAIWAN (R.O.C.)

**Remark :**

- (▲1) : Limit is according to Council of Europe Resolution AP (2004) 4.
- The reproducibility (R) of fatty food simuiants is 3.7mg/dm<sup>2</sup> or 22.2mg/kg according to EN 1186-2(2002) Annex F.
- Substitute Test: Test Condition of OM2 in (EU) No 10/2011 is specified by client and conventional condition for the substitute tests instead of OM2 is based on EN 1186-1 and EN 13130-1.

Test condition with simulant D2	Test condition with simulant ethanol 95%	Test condition with simulant iso-Octane
10 day at 40°C	10 day at 40°C	2 day at 20°C

**Note :**

1. mg/kg = ppm ; mg/dm<sup>2</sup> = milligram per square decimeter ;
2. MDL = Method Detection Limit
3. n.d. = Not Detected = below MDL
4. °C = degree Celsius
5. Test condition & simulant were specified by client.
6. The PAA test was subcontracted to other SGS Laboratory.

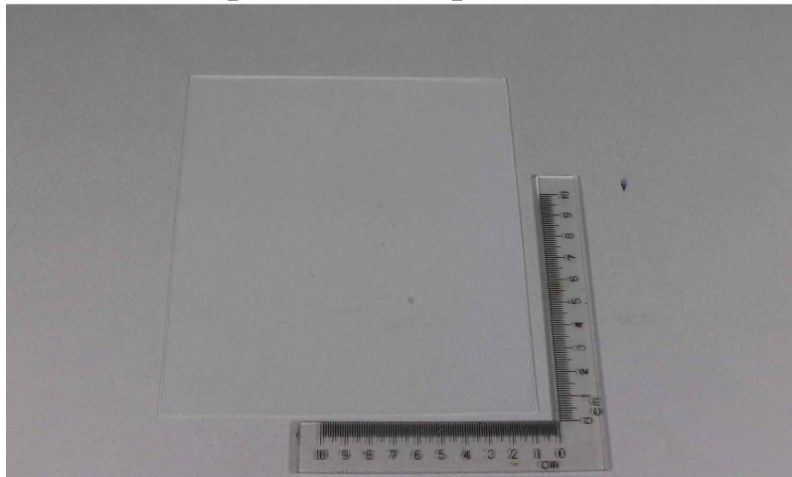
Unless otherwise stated the results shown in this test report refer only to the sample(s) tested. This test report cannot be reproduced, except in full, without prior written permission of the Company. 除非另有說明，此報告結果僅對測試之樣品負責。本報告未經本公司書面許可，不可部分複製。  
 This document is issued by the Company subject to its General Conditions of Service printed overleaf, available on request or accessible at [www.sgs.com/terms\\_and\\_conditions.htm](http://www.sgs.com/terms_and_conditions.htm) and, for electronic format documents, subject to Terms and Conditions for Electronic Documents at [www.sgs.com/terms\\_e-document.htm](http://www.sgs.com/terms_e-document.htm). Attention is drawn to the limitation of liability, indemnification and jurisdiction issues defined therein. Any holder of this document is advised that information contained hereon reflects the Company's findings at the time of its intervention only and within the limits of Client's instructions, if any. The Company's sole responsibility is to its Client and this document does not exonerate parties to a transaction from exercising all their rights and obligations under the transaction documents. This document cannot be reproduced except in full, without prior written approval of the Company. Any unauthorized alteration, forgery or falsification of the content or appearance of this document is unlawful and offenders may be prosecuted to the fullest extent of the law.

FORMOSA PLASTICS CORPORATION

NO. 1, SHIHUUA 1ST RD., LINYUAN DISTRICT, KAOHSIUNG CITY 832, TAIWAN (R.O.C.)

\* The tested sample / part is marked by an arrow if it's shown on the photo. \*

### KU/2018/60052



\*\* End of Report \*\*

Unless otherwise stated the results shown in this test report refer only to the sample(s) tested. This test report cannot be reproduced, except in full, without prior written permission of the Company. 除非另有說明，此報告結果僅對測試之樣品負責。本報告未經本公司書面許可，不可部分複製。  
This document is issued by the Company subject to its General Conditions of Service printed overleaf, available on request or accessible at [www.sgs.com/terms\\_and\\_conditions.htm](http://www.sgs.com/terms_and_conditions.htm) and, for electronic format documents, subject to Terms and Conditions for Electronic Documents at [www.sgs.com/terms\\_e-document.htm](http://www.sgs.com/terms_e-document.htm). Attention is drawn to the limitation of liability, indemnification and jurisdiction issues defined therein. Any holder of this document is advised that information contained hereon reflects the Company's findings at the time of its intervention only and within the limits of Client's instructions, if any. The Company's sole responsibility is to its Client and this document does not exonerate parties to a transaction from exercising all their rights and obligations under the transaction documents. This document cannot be reproduced except in full, without prior written approval of the Company. Any unauthorized alteration, forgery or falsification of the content or appearance of this document is unlawful and offenders may be prosecuted to the fullest extent of the law.