



Test Report

No.: EKR24100298

Date: 12-Jan-2024

Page: 1 of 9

FORMOSA PLASTICS CORPORATION

NO. 100, SHUI-GUAN RD., RENWU DIST., KAOHSIUNG CITY 814, TAIWAN

The following sample(s) was/were submitted and identified by the applicant as:

Sample Submitted By : FORMOSA PLASTICS CORPORATION
 Sample Name : PROCESSING AIDS
 Style/Item No. : P-220

=====
 Sample Receiving Date : 05-Jan-2024
 Testing Period : 05-Jan-2024 to 12-Jan-2024

Test Requested : (1) As specified by client, with reference to RoHS 2011/65/EU Annex II and amending Directive (EU) 2015/863 to determine Cadmium, Lead, Mercury, Cr(VI), PBBs, PBDEs, DBP, BBP, DEHP, DIBP contents in the submitted sample(s).
 (2) Please refer to next pages for the other item(s).

Test Results : Please refer to following pages.

Conclusion : (1) Based on the performed tests on submitted sample(s), the test results of Cadmium, Lead, Mercury, Cr(VI), PBBs, PBDEs, DBP, BBP, DEHP, DIBP comply with the limits as set by RoHS Directive (EU) 2015/863 amending Annex II to Directive 2011/65/EU.

Ray Chang

Ray Chang, Ph.D./Department Manager
Signed for and on behalf of



SGS TAIWAN LTD.
Chemical Laboratory-Kaohsiung



PIN CODE: 91F34B53

This document is issued by the Company subject to its General Conditions of Service printed overleaf, available on request or accessible at <https://www.sgs.com.tw/terms-of-service> and, for electronic format documents, subject to Terms and Conditions for Electronic Documents at <https://www.sgs.com.tw/terms-of-service>. Attention is drawn to the limitation of liability, indemnification and jurisdiction issues defined therein. Any holder of this document is advised that information contained hereon reflects the Company's findings at the time of its intervention only and within the limits of client's instruction, if any. The Company's sole responsibility is to its Client and this document does not exonerate parties to a transaction from exercising all their rights and obligations under the transaction documents. This document cannot be reproduced, except in full, without prior written approval of the Company. Any unauthorized alteration, forgery or falsification of the content or appearance of this document is unlawful and offenders may be prosecuted to the fullest extent of the law. Unless otherwise stated the results shown in this test report refer only to the sample(s) tested.

Test Report

No.: EKR24100298

Date: 12-Jan-2024

Page: 2 of 9

FORMOSA PLASTICS CORPORATION
NO. 100, SHUI-GUAN RD., RENWU DIST., KAOHSIUNG CITY 814, TAIWAN

Test Part Description

No.1 : WHITE POWDER

Test Result(s)

Test Item(s)	Method	Unit	MDL	Result	Limit
				No.1	
Cadmium (Cd)	With reference to IEC 62321-5: 2013, analysis was performed by ICP-OES.	mg/kg	2	n.d.	100
Lead (Pb)	With reference to IEC 62321-5: 2013, analysis was performed by ICP-OES.	mg/kg	2	n.d.	1000
Mercury (Hg)	With reference to IEC 62321-4: 2013+ AMD1: 2017, analysis was performed by ICP-OES.	mg/kg	2	n.d.	1000
Hexavalent Chromium Cr(VI)	With reference to IEC 62321-7-2: 2017, analysis was performed by UV-VIS.	mg/kg	8	n.d.	1000
Monobromobiphenyl	With reference to IEC 62321-6: 2015, analysis was performed by GC/MS.	mg/kg	5	n.d.	-
Dibromobiphenyl		mg/kg	5	n.d.	-
Tribromobiphenyl		mg/kg	5	n.d.	-
Tetrabromobiphenyl		mg/kg	5	n.d.	-
Pentabromobiphenyl		mg/kg	5	n.d.	-
Hexabromobiphenyl		mg/kg	5	n.d.	-
Heptabromobiphenyl		mg/kg	5	n.d.	-
Octabromobiphenyl		mg/kg	5	n.d.	-
Nonabromobiphenyl		mg/kg	5	n.d.	-
Decabromobiphenyl		mg/kg	5	n.d.	-
Sum of PBBs		mg/kg	-	n.d.	1000
Monobromodiphenyl ether		mg/kg	5	n.d.	-
Dibromodiphenyl ether		mg/kg	5	n.d.	-
Tribromodiphenyl ether		mg/kg	5	n.d.	-
Tetrabromodiphenyl ether		mg/kg	5	n.d.	-
Pentabromodiphenyl ether		mg/kg	5	n.d.	-
Hexabromodiphenyl ether		mg/kg	5	n.d.	-
Heptabromodiphenyl ether	mg/kg	5	n.d.	-	
Octabromodiphenyl ether	mg/kg	5	n.d.	-	
Nonabromodiphenyl ether	mg/kg	5	n.d.	-	
Decabromodiphenyl ether	mg/kg	5	n.d.	-	
Sum of PBDEs	mg/kg	-	n.d.	1000	

This document is issued by the Company subject to its General Conditions of Service printed overleaf, available on request or accessible at <https://www.sgs.com.tw/terms-of-service> and, for electronic format documents, subject to Terms and Conditions for Electronic Documents at <https://www.sgs.com.tw/terms-of-service>. Attention is drawn to the limitation of liability, indemnification and jurisdiction issues defined therein. Any holder of this document is advised that information contained hereon reflects the Company's findings at the time of its intervention only and within the limits of client's instruction, if any. The Company's sole responsibility is to its Client and this document does not exonerate parties to a transaction from exercising all their rights and obligations under the transaction documents. This document cannot be reproduced, except in full, without prior written approval of the Company. Any unauthorized alteration, forgery or falsification of the content or appearance of this document is unlawful and offenders may be prosecuted to the fullest extent of the law. Unless otherwise stated the results shown in this test report refer only to the sample(s) tested.

Test Report

No.: EKR24100298

Date: 12-Jan-2024

Page: 3 of 9

FORMOSA PLASTICS CORPORATION

NO. 100, SHUI-GUAN RD., RENWU DIST., KAOHSIUNG CITY 814, TAIWAN

Test Item(s)	Method	Unit	MDL	Result	Limit
				No.1	
Butyl benzyl phthalate (BBP)	With reference to IEC 62321-8: 2017, analysis was performed by GC/MS.	mg/kg	50	n.d.	1000
Dibutyl phthalate (DBP)		mg/kg	50	n.d.	1000
Diisobutyl phthalate (DIBP)		mg/kg	50	n.d.	1000
Di-(2-ethylhexyl) phthalate (DEHP)		mg/kg	50	n.d.	1000
Tetrabromobisphenol A (TBBP-A) (CAS No.: 79-94-7)	With reference to RSTS-E&E-121, analysis was performed by LC/MS.	mg/kg	10	n.d.	-
Medium Chain Chlorinated Paraffins(C14-C17) (MCCP) (CAS No.: 85535-85-9)	With reference to ISO 18219-2: 2021, analysis was performed by GC/MS.	mg/kg	50	n.d.	-

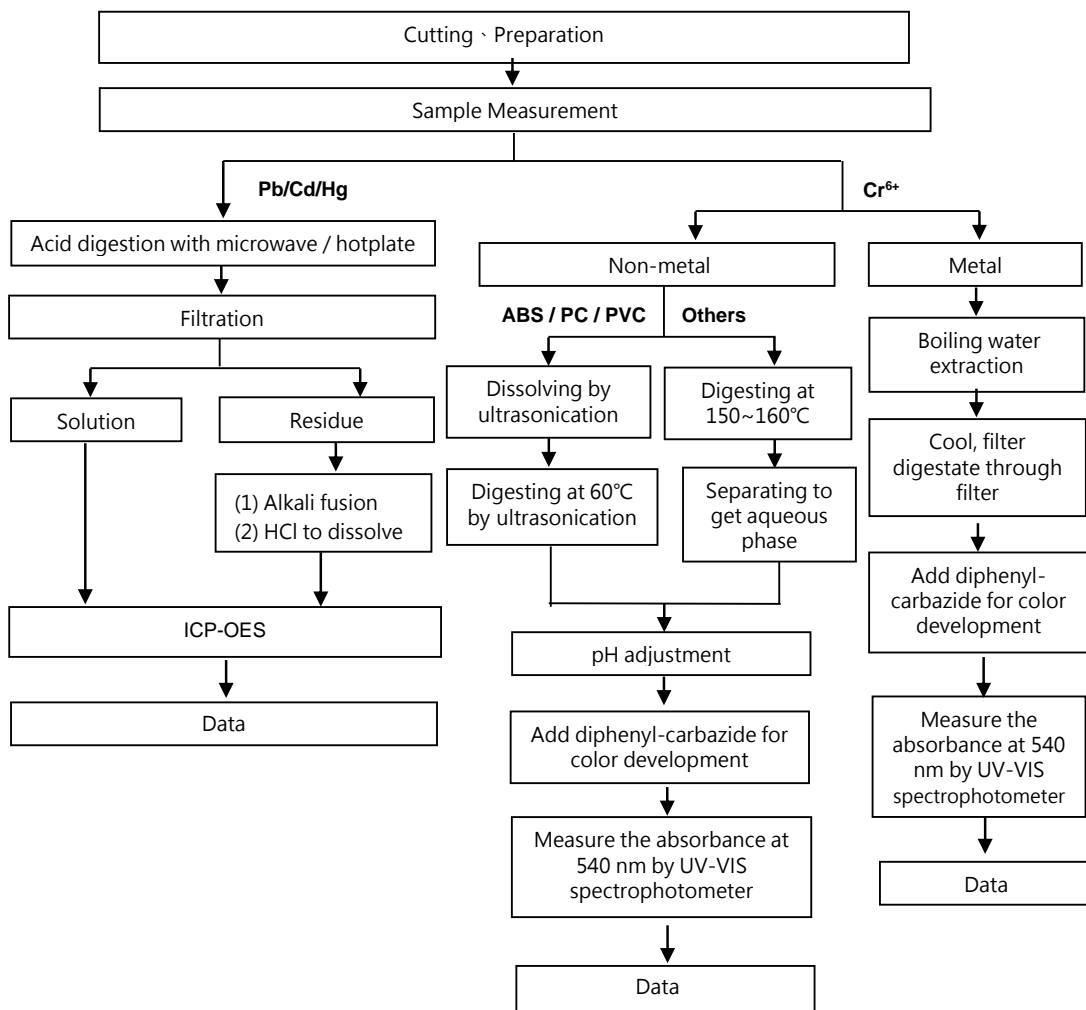
Note :

1. mg/kg = ppm ; 0.1wt% = 0.1% = 1000ppm
2. MDL = Method Detection Limit
3. n.d. = Not Detected (Less than MDL)
4. "-" = Not Regulated
5. Unless otherwise stated , the decision rule for conformity reporting is based on Binary Statement for Simple Acceptance Rule (w=0) stated in ILAC-G8:09/2019. According to this rule, the judgement of conformity is based on the comparing test results with limits.

This document is issued by the Company subject to its General Conditions of Service printed overleaf, available on request or accessible at <https://www.sgs.com.tw/terms-of-service> and, for electronic format documents, subject to Terms and Conditions for Electronic Documents at <https://www.sgs.com.tw/terms-of-service>. Attention is drawn to the limitation of liability, indemnification and jurisdiction issues defined therein. Any holder of this document is advised that information contained hereon reflects the Company's findings at the time of its intervention only and within the limits of client's instruction, if any. The Company's sole responsibility is to its Client and this document does not exonerate parties to a transaction from exercising all their rights and obligations under the transaction documents. This document cannot be reproduced, except in full, without prior written approval of the Company. Any unauthorized alteration, forgery or falsification of the content or appearance of this document is unlawful and offenders may be prosecuted to the fullest extent of the law. Unless otherwise stated the results shown in this test report refer only to the sample(s) tested.

Analytical flow chart of Heavy Metal

These samples were dissolved totally by pre-conditioning method according to below flow chart.
(Cr⁶⁺ test method excluded)

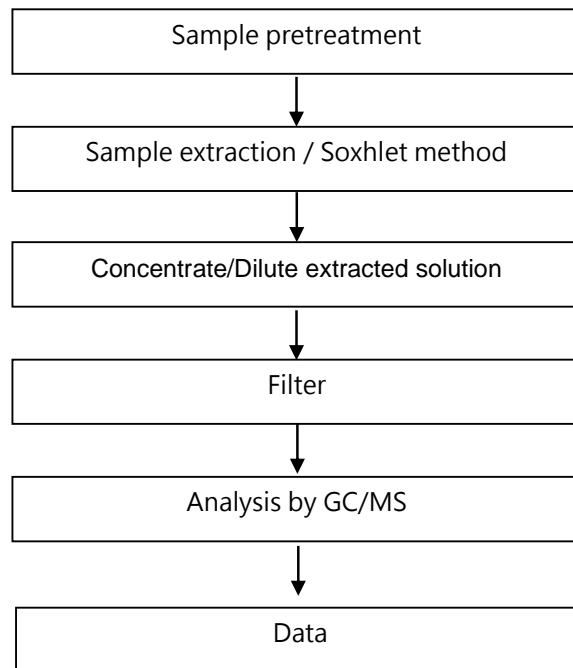


This document is issued by the Company subject to its General Conditions of Service printed overleaf, available on request or accessible at <https://www.sgs.com.tw/terms-of-service> and, for electronic format documents, subject to Terms and Conditions for Electronic Documents at <https://www.sgs.com.tw/terms-of-service>. Attention is drawn to the limitation of liability, indemnification and jurisdiction issues defined therein. Any holder of this document is advised that information contained hereon reflects the Company's findings at the time of its intervention only and within the limits of client's instruction, if any. The Company's sole responsibility is to its Client and this document does not exonerate parties to a transaction from exercising all their rights and obligations under the transaction documents. This document cannot be reproduced, except in full, without prior written approval of the Company. Any unauthorized alteration, forgery or falsification of the content or appearance of this document is unlawful and offenders may be prosecuted to the fullest extent of the law. Unless otherwise stated the results shown in this test report refer only to the sample(s) tested.

FORMOSA PLASTICS CORPORATION

NO. 100, SHUI-GUAN RD., RENWU DIST., KAOHSIUNG CITY 814, TAIWAN

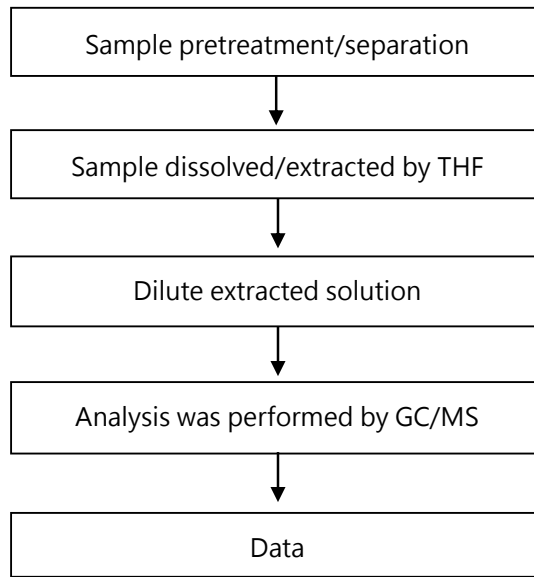
PBB/PBDE analytical FLOW CHART



This document is issued by the Company subject to its General Conditions of Service printed overleaf, available on request or accessible at <https://www.sgs.com.tw/terms-of-service> and, for electronic format documents, subject to Terms and Conditions for Electronic Documents at <https://www.sgs.com.tw/terms-of-service>. Attention is drawn to the limitation of liability, indemnification and jurisdiction issues defined therein. Any holder of this document is advised that information contained hereon reflects the Company's findings at the time of its intervention only and within the limits of client's instruction, if any. The Company's sole responsibility is to its Client and this document does not exonerate parties to a transaction from exercising all their rights and obligations under the transaction documents. This document cannot be reproduced, except in full, without prior written approval of the Company. Any unauthorized alteration, forgery or falsification of the content or appearance of this document is unlawful and offenders may be prosecuted to the fullest extent of the law. Unless otherwise stated the results shown in this test report refer only to the sample(s) tested.

Analytical flow chart of phthalate content

【 Test method: IEC 62321-8】

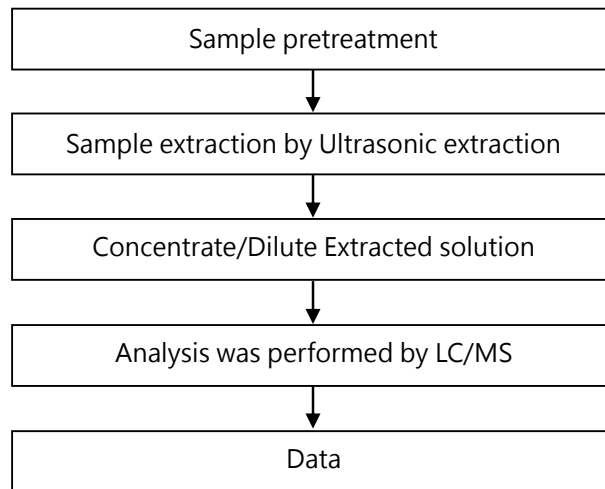


This document is issued by the Company subject to its General Conditions of Service printed overleaf, available on request or accessible at <https://www.sgs.com.tw/terms-of-service> and, for electronic format documents, subject to Terms and Conditions for Electronic Documents at <https://www.sgs.com.tw/terms-of-service>. Attention is drawn to the limitation of liability, indemnification and jurisdiction issues defined therein. Any holder of this document is advised that information contained hereon reflects the Company's findings at the time of its intervention only and within the limits of client's instruction, if any. The Company's sole responsibility is to its Client and this document does not exonerate parties to a transaction from exercising all their rights and obligations under the transaction documents. This document cannot be reproduced, except in full, without prior written approval of the Company. Any unauthorized alteration, forgery or falsification of the content or appearance of this document is unlawful and offenders may be prosecuted to the fullest extent of the law. Unless otherwise stated the results shown in this test report refer only to the sample(s) tested.

FORMOSA PLASTICS CORPORATION

NO. 100, SHUI-GUAN RD., RENWU DIST., KAOHSIUNG CITY 814, TAIWAN

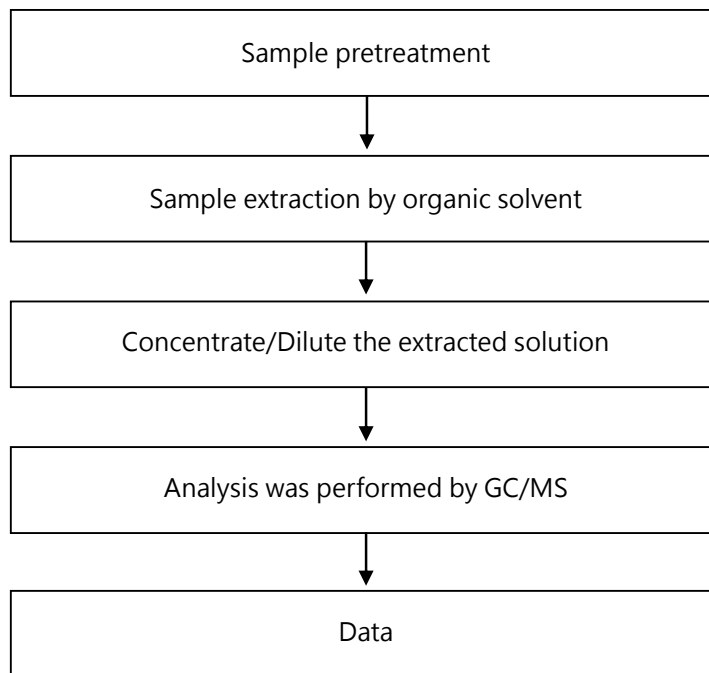
TBBP-A analytical flow chart



This document is issued by the Company subject to its General Conditions of Service printed overleaf, available on request or accessible at <https://www.sgs.com.tw/terms-of-service> and, for electronic format documents, subject to Terms and Conditions for Electronic Documents at <https://www.sgs.com.tw/terms-of-service>. Attention is drawn to the limitation of liability, indemnification and jurisdiction issues defined therein. Any holder of this document is advised that information contained hereon reflects the Company's findings at the time of its intervention only and within the limits of client's instruction, if any. The Company's sole responsibility is to its Client and this document does not exonerate parties to a transaction from exercising all their rights and obligations under the transaction documents. This document cannot be reproduced, except in full, without prior written approval of the Company. Any unauthorized alteration, forgery or falsification of the content or appearance of this document is unlawful and offenders may be prosecuted to the fullest extent of the law. Unless otherwise stated the results shown in this test report refer only to the sample(s) tested.

Analytical flow chart

* Apply to: PCBs, PCNs, PCTs, Mirex, Chlorinated Paraffins, DBBT



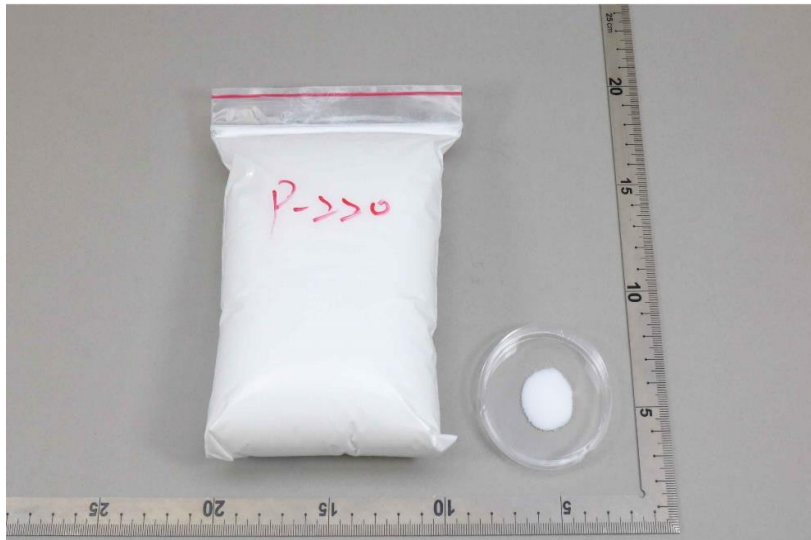
This document is issued by the Company subject to its General Conditions of Service printed overleaf, available on request or accessible at <https://www.sgs.com.tw/terms-of-service> and, for electronic format documents, subject to Terms and Conditions for Electronic Documents at <https://www.sgs.com.tw/terms-of-service>. Attention is drawn to the limitation of liability, indemnification and jurisdiction issues defined therein. Any holder of this document is advised that information contained hereon reflects the Company's findings at the time of its intervention only and within the limits of client's instruction, if any. The Company's sole responsibility is to its Client and this document does not exonerate parties to a transaction from exercising all their rights and obligations under the transaction documents. This document cannot be reproduced, except in full, without prior written approval of the Company. Any unauthorized alteration, forgery or falsification of the content or appearance of this document is unlawful and offenders may be prosecuted to the fullest extent of the law. Unless otherwise stated the results shown in this test report refer only to the sample(s) tested.

FORMOSA PLASTICS CORPORATION

NO. 100, SHUI-GUAN RD., RENWU DIST., KAOHSIUNG CITY 814, TAIWAN

* The tested sample / part is marked by an arrow if it's shown on the photo. *

EKR24100298



** End of Report **

This document is issued by the Company subject to its General Conditions of Service printed overleaf, available on request or accessible at <https://www.sgs.com.tw/terms-of-service> and, for electronic format documents, subject to Terms and Conditions for Electronic Documents at <https://www.sgs.com.tw/terms-of-service>. Attention is drawn to the limitation of liability, indemnification and jurisdiction issues defined therein. Any holder of this document is advised that information contained hereon reflects the Company's findings at the time of its intervention only and within the limits of client's instruction, if any. The Company's sole responsibility is to its Client and this document does not exonerate parties to a transaction from exercising all their rights and obligations under the transaction documents. This document cannot be reproduced, except in full, without prior written approval of the Company. Any unauthorized alteration, forgery or falsification of the content or appearance of this document is unlawful and offenders may be prosecuted to the fullest extent of the law. Unless otherwise stated the results shown in this test report refer only to the sample(s) tested.