

## Test Report

No.: EKR20C01802

Date: 11-Jan-2021

Page: 1 of 30

FORMOSA PLASTICS CORPORATION

NO. 1-1, SHIH-WHA 1ST RD., LIN-YUAN DISTRICT, KAOHSIUNG CITY 832, TAIWAN (R. O. C.)

**The following sample(s) was/were submitted and identified by/on behalf of the applicant as:**

Sample Submitted By : FORMOSA PLASTICS CORPORATION  
Sample Name : POLYPROPYLENE IMPACT COPOLYMER  
Style/Item No. : 3003,3004,3005,3010,3015,3015S,3020,3040,3040C,3040S,3064H,3080,3080P,3084,3084H,3090,3155,3184,3200W,3204,3354,3504,4084,4204,4304,4604  
Sample Material : 100%POLYPROPYLENE COPOLYMER

Sample Receiving Date : 25-Dec-2020  
Testing Period : 25-Dec-2020 to 07-Jan-2021

- Test Requested** :
- (1) As specified by client, with reference to RoHS 2011/65/EU Annex II and amending Directive (EU) 2015/863 to determine Cadmium, Lead, Mercury, Cr(VI), PBBs, PBDEs, DBP, BBP, DEHP, DIBP contents in the submitted sample(s).
  - (2) As specified by client, the sample(s) was/were tested with reference to Annex XVII of REACH Regulation (EC) No 1907/2006 to determine Nickel release.
  - (3) Please refer to next pages for the other item(s).
- Test Results** : Please refer to following pages.
- Conclusion** :
- (1) Based on the performed tests on submitted sample(s), the test results of Cadmium, Lead, Mercury, Cr(VI), PBBs, PBDEs, DBP, BBP, DEHP, DIBP comply with the limits as set by RoHS Directive (EU) 2015/863 amending Annex II to Directive 2011/65/EU.
  - (2) Based on the performed tests on submitted sample(s), the test results of Nickel-release comply with the limits as set by Annex XVII of REACH Regulation (EC) No 1907/2006.

  
Ray Chang, Ph.D. Manager  
Signed for and on behalf of  
SGS TAIWAN LTD.  
Chemical Laboratory-Kaohsiung



PIN CODE: 940B69A6

This document is issued by the Company subject to its General Conditions of Service printed overleaf, available on request or accessible at <https://www.sgs.com.tw/terms-of-service> and, for electronic format documents, subject to Terms and Conditions for Electronic Documents at <https://www.sgs.com.tw/terms-of-service>. Attention is drawn to the limitation of liability, indemnification and jurisdiction issues defined therein. Any holder of this document is advised that information contained hereon reflects the Company's findings at the time of its intervention only and within the limits of client's instruction, if any. The Company's sole responsibility is to its Client and this document does not exonerate parties to a transaction from exercising all their rights and obligations under the transaction documents. This document cannot be reproduced, except in full, without prior written approval of the Company. Any unauthorized alteration, forgery or falsification of the content or appearance of this document is unlawful and offenders may be prosecuted to the fullest extent of the law. Unless otherwise stated the results shown in this test report refer only to the sample(s) tested.

# Test Report

No.: EKR20C01802

Date: 11-Jan-2021

Page: 2 of 30

FORMOSA PLASTICS CORPORATION

NO. 1-1, SHIH-WHA 1ST RD., LIN-YUAN DISTRICT, KAOHSIUNG CITY 832, TAIWAN (R. O. C.)

## Test Part Description

No.1 : TRANSLUCENT PLASTIC PELLETS

## Test Result(s)

Test Item(s)	Method	Unit	MDL	Result	Limit
				No.1	
Cadmium (Cd) (CAS No.: 7440-43-9)	With reference to IEC 62321-5: 2013, analysis was performed by ICP-OES.	mg/kg	2	n.d.	100
Lead (Pb) (CAS No.: 7439-92-1)	With reference to IEC 62321-5: 2013, analysis was performed by ICP-OES.	mg/kg	2	n.d.	1000
Mercury (Hg) (CAS No.: 7439-97-6)	With reference to IEC 62321-4: 2013+ AMD1: 2017, analysis was performed by ICP-OES.	mg/kg	2	n.d.	1000
Hexavalent Chromium Cr(VI) (CAS No.: 18540-29-9)	With reference to IEC 62321-7-2: 2017, analysis was performed by UV-VIS.	mg/kg	8	n.d.	1000
Monobromobiphenyl	With reference to IEC 62321-6: 2015, analysis was performed by GC/MS.	mg/kg	5	n.d.	-
Dibromobiphenyl		mg/kg	5	n.d.	-
Tribromobiphenyl		mg/kg	5	n.d.	-
Tetrabromobiphenyl		mg/kg	5	n.d.	-
Pentabromobiphenyl		mg/kg	5	n.d.	-
Hexabromobiphenyl		mg/kg	5	n.d.	-
Heptabromobiphenyl		mg/kg	5	n.d.	-
Octabromobiphenyl		mg/kg	5	n.d.	-
Nonabromobiphenyl		mg/kg	5	n.d.	-
Decabromobiphenyl		mg/kg	5	n.d.	-
<b>Sum of PBBs</b>		mg/kg	-	n.d.	1000
Monobromodiphenyl ether		With reference to IEC 62321-6: 2015, analysis was performed by GC/MS.	mg/kg	5	n.d.
Dibromodiphenyl ether	mg/kg		5	n.d.	-
Tribromodiphenyl ether	mg/kg		5	n.d.	-
Tetrabromodiphenyl ether	mg/kg		5	n.d.	-
Pentabromodiphenyl ether	mg/kg		5	n.d.	-
Hexabromodiphenyl ether	mg/kg		5	n.d.	-
Heptabromodiphenyl ether	mg/kg		5	n.d.	-
Octabromodiphenyl ether	mg/kg		5	n.d.	-
Nonabromodiphenyl ether	mg/kg		5	n.d.	-
Decabromodiphenyl ether	mg/kg		5	n.d.	-
<b>Sum of PBDEs</b>	mg/kg		-	n.d.	1000

This document is issued by the Company subject to its General Conditions of Service printed overleaf, available on request or accessible at <https://www.sgs.com.tw/terms-of-service> and, for electronic format documents, subject to Terms and Conditions for Electronic Documents at <https://www.sgs.com.tw/terms-of-service>. Attention is drawn to the limitation of liability, indemnification and jurisdiction issues defined therein. Any holder of this document is advised that information contained hereon reflects the Company's findings at the time of its intervention only and within the limits of client's instruction, if any. The Company's sole responsibility is to its Client and this document does not exonerate parties to a transaction from exercising all their rights and obligations under the transaction documents. This document cannot be reproduced, except in full, without prior written approval of the Company. Any unauthorized alteration, forgery or falsification of the content or appearance of this document is unlawful and offenders may be prosecuted to the fullest extent of the law. Unless otherwise stated the results shown in this test report refer only to the sample(s) tested.

# Test Report

No.: EKR20C01802

Date: 11-Jan-2021

Page: 3 of 30

FORMOSA PLASTICS CORPORATION

NO. 1-1, SHIH-WHA 1ST RD., LIN-YUAN DISTRICT, KAOHSIUNG CITY 832, TAIWAN (R. O. C.)

Test Item(s)	Method	Unit	MDL	Result	Limit
				No.1	
Polychlorinated biphenyls (PCBs)	With reference to US EPA 3550C: 2007, analysis was performed by GC/MS.	mg/kg	0.5	n.d.	-
Polychlorinated naphthalene (PCNs)	With reference to US EPA 3550C: 2007, analysis was performed by GC/MS.	mg/kg	5	n.d.	-
Polychlorinated terphenyls (PCTs)	With reference to US EPA 3550C: 2007, analysis was performed by GC/MS.	mg/kg	0.5	n.d.	-
Short Chain Chlorinated Paraffins(C10-C13) (SCCP) (CAS No.: 85535-84-8)	With reference to US EPA 3550C: 2007, analysis was performed by GC/ECD.	mg/kg	100	n.d.	-
Formaldehyde (CAS No.: 50-00-0)	With reference to ISO 17226-1: 2018, analysis was performed by LC/DAD.	mg/kg	3	n.d.	-
Polyvinyl chloride (PVC)	With reference to ASTM E1252: 2013, analysis was performed by FT-IR and Flame Test.	**	-	Negative	-
<b>Asbestos</b>					
Actinolite (CAS No.: 77536-66-4)	With reference to EPA 600/R-93/116: 1993, analysis was performed by Stereo Microscope (SM), Dispersion Staining Polarized Light Microscope (DS-PLM) and X-ray Diffraction Spectrometer (XRD).	%	-	Negative	-
Amosite (CAS No.: 12172-73-5)		%	-	Negative	-
Anthophyllite (CAS No.: 77536-67-5)		%	-	Negative	-
Chrysotile (CAS No.: 12001-29-5)		%	-	Negative	-
Crocidolite (CAS No.: 12001-28-4)		%	-	Negative	-
Tremolite (CAS No.: 77536-68-6)		%	-	Negative	-
Tributyl tin (TBT)	With reference to ISO 17353: 2004, analysis was performed by GC/FPD.	mg/kg	0.03	n.d.	-
Triphenyl tin (TPHT)		mg/kg	0.03	n.d.	-
Dibutyl tin (DBT)		mg/kg	0.03	n.d.	-
Diocetyl tin (DOT)		mg/kg	0.03	n.d.	-
Beryllium (Be) (CAS No.: 7440-41-7)	With reference to US EPA 3052: 1996, analysis was performed by ICP-OES.	mg/kg	2	n.d.	-
Beryllium oxide (BeO) (CAS No.: 1304-56-9)	Calculated from the result of Beryllium.	mg/kg	2▲	n.d.	-
Chlorine (Cl) (CAS No.: 22537-15-1)	With reference to BS EN 14582: 2016, analysis was performed by IC.	mg/kg	50	n.d.	-
Bromine (Br) (CAS No.: 10097-32-2)		mg/kg	50	n.d.	-

This document is issued by the Company subject to its General Conditions of Service printed overleaf, available on request or accessible at <https://www.sgs.com.tw/terms-of-service> and, for electronic format documents, subject to Terms and Conditions for Electronic Documents at <https://www.sgs.com.tw/terms-of-service>. Attention is drawn to the limitation of liability, indemnification and jurisdiction issues defined therein. Any holder of this document is advised that information contained hereon reflects the Company's findings at the time of its intervention only and within the limits of client's instruction, if any. The Company's sole responsibility is to its Client and this document does not exonerate parties to a transaction from exercising all their rights and obligations under the transaction documents. This document cannot be reproduced, except in full, without prior written approval of the Company. Any unauthorized alteration, forgery or falsification of the content or appearance of this document is unlawful and offenders may be prosecuted to the fullest extent of the law. Unless otherwise stated the results shown in this test report refer only to the sample(s) tested.

# Test Report

No.: EKR20C01802

Date: 11-Jan-2021

Page: 4 of 30

FORMOSA PLASTICS CORPORATION

NO. 1-1, SHIH-WHA 1ST RD., LIN-YUAN DISTRICT, KAOHSIUNG CITY 832, TAIWAN (R. O. C.)

Test Item(s)	Method	Unit	MDL	Result	Limit
				No.1	
<b>AZO</b>					
4-Aminobiphenyl (CAS No.: 92-67-1)	With reference to LFGB BVL B 82.02-2: 2013, analysis was performed by GC/MS & HPLC/DAD.	mg/kg	3	n.d.	-
Benzidine (CAS No.: 92-87-5)		mg/kg	3	n.d.	-
4-chloro-o-toluidine (CAS No.: 95-69-2)		mg/kg	3	n.d.	-
2-Naphthylamine (CAS No.: 91-59-8)		mg/kg	3	n.d.	-
o-aminoazotoluene (CAS No.: 97-56-3)		mg/kg	3	n.d.	-
2-Amino-4-nitrotoluene (CAS No.: 99-55-8)		mg/kg	3	n.d.	-
p-Chloroaniline (CAS No.: 106-47-8)		mg/kg	3	n.d.	-
2,4-diaminoanisole (CAS No.: 615-05-4)		mg/kg	3	n.d.	-
4,4'-Diaminodiphenylmethane (CAS No.: 101-77-9)		mg/kg	3	n.d.	-
3,3'-Dichlorobenzidine (CAS No.: 91-94-1)		mg/kg	3	n.d.	-
3,3'-Dimethoxybenzidine (CAS No.: 119-90-4)		mg/kg	3	n.d.	-
3,3'-Dimethylbenzidine (CAS No.: 119-93-7)		mg/kg	3	n.d.	-
3,3'-Dimethyl-4,4'-diaminodiphenylmethane / 4,4'-methylenedi-o-toluidine (CAS No.: 838-88-0)		mg/kg	3	n.d.	-
p-Cresidine (CAS No.: 120-71-8)		mg/kg	3	n.d.	-
4,4'-Methylene-bis-(2-chloroaniline) (CAS No.: 101-14-4)		mg/kg	3	n.d.	-
4,4'-Oxydianiline (CAS No.: 101-80-4)	mg/kg	3	n.d.	-	

This document is issued by the Company subject to its General Conditions of Service printed overleaf, available on request or accessible at <https://www.sgs.com.tw/terms-of-service> and, for electronic format documents, subject to Terms and Conditions for Electronic Documents at <https://www.sgs.com.tw/terms-of-service>. Attention is drawn to the limitation of liability, indemnification and jurisdiction issues defined therein. Any holder of this document is advised that information contained hereon reflects the Company's findings at the time of its intervention only and within the limits of client's instruction, if any. The Company's sole responsibility is to its Client and this document does not exonerate parties to a transaction from exercising all their rights and obligations under the transaction documents. This document cannot be reproduced, except in full, without prior written approval of the Company. Any unauthorized alteration, forgery or falsification of the content or appearance of this document is unlawful and offenders may be prosecuted to the fullest extent of the law. Unless otherwise stated the results shown in this test report refer only to the sample(s) tested.

# Test Report

No.: EKR20C01802

Date: 11-Jan-2021

Page: 5 of 30

FORMOSA PLASTICS CORPORATION

NO. 1-1, SHIH-WHA 1ST RD., LIN-YUAN DISTRICT, KAOHSIUNG CITY 832, TAIWAN (R. O. C.)

Test Item(s)	Method	Unit	MDL	Result	Limit
				No.1	
4,4'-Thiodianiline (CAS No.: 139-65-1)	With reference to LFGB BVL B 82.02-2: 2013, analysis was performed by GC/MS & HPLC/DAD.	mg/kg	3	n.d.	-
o-Toluidine (CAS No.: 95-53-4)		mg/kg	3	n.d.	-
4-Methyl-m-phenylenediamine / 2,4-Toluyldiamine (TDA) (CAS No.: 95-80-7)		mg/kg	3	n.d.	-
2,4,5-Trimethylaniline (CAS No.: 137-17-7)		mg/kg	3	n.d.	-
o-Anisidine (CAS No.: 90-04-0)		mg/kg	3	n.d.	-
p-Aminoazobenzene (CAS No.: 60-09-3)		mg/kg	3	n.d.	-
2,4-Xylidine (CAS No.: 95-68-1)		mg/kg	3	n.d.	-
2,6-Xylidine (CAS No.: 87-62-7)		mg/kg	3	n.d.	-
Perfluorooctane sulfonate (PFOS) and it's salt (CAS No.: 1763-23-1 and its salts)	With reference to CEN/TS 15968: 2010, analysis was performed by LC/MS/MS.	mg/kg	0.01	n.d.	-
Perfluorooctanoic acid (PFOA) and it's salt (CAS No.: 335-67-1 and its salts)		mg/kg	0.01	n.d.	-
2-benzotriazol-2-yl-4,6-di-tert-butylphenol (UV-320) (CAS No.: 3846-71-7)	With reference to US EPA 3550C: 2007, analysis was performed by GC/MS.	mg/kg	5	n.d.	-
Cobalt dichloride (CoCl <sub>2</sub> ) (CAS No.: 7646-79-9)	With reference to RSTS-EE-SVHC-007, analysis was performed by ICP-OES, IC. Calculated from the results of Cobalt, Chlorine.	mg/kg	50	n.d.	-
Arsenic (As) (CAS No.: 7440-38-2)	With reference to US EPA 3052: 1996, analysis was performed by ICP-OES.	mg/kg	2	n.d.	-
Diarsenic pentaoxide (As <sub>2</sub> O <sub>5</sub> ) (CAS No.: 1303-28-2)		mg/kg	2▲	n.d.	-
Diarsenic trioxide (As <sub>2</sub> O <sub>3</sub> ) (CAS No.: 1327-53-3)		mg/kg	2▲	n.d.	-

This document is issued by the Company subject to its General Conditions of Service printed overleaf, available on request or accessible at <https://www.sgs.com.tw/terms-of-service> and, for electronic format documents, subject to Terms and Conditions for Electronic Documents at <https://www.sgs.com.tw/terms-of-service>. Attention is drawn to the limitation of liability, indemnification and jurisdiction issues defined therein. Any holder of this document is advised that information contained hereon reflects the Company's findings at the time of its intervention only and within the limits of client's instruction, if any. The Company's sole responsibility is to its Client and this document does not exonerate parties to a transaction from exercising all their rights and obligations under the transaction documents. This document cannot be reproduced, except in full, without prior written approval of the Company. Any unauthorized alteration, forgery or falsification of the content or appearance of this document is unlawful and offenders may be prosecuted to the fullest extent of the law. Unless otherwise stated the results shown in this test report refer only to the sample(s) tested.

# Test Report

No.: EKR20C01802

Date: 11-Jan-2021

Page: 6 of 30

FORMOSA PLASTICS CORPORATION

NO. 1-1, SHIH-WHA 1ST RD., LIN-YUAN DISTRICT, KAOHSIUNG CITY 832, TAIWAN (R. O. C.)

Test Item(s)	Method	Unit	MDL	Result	Limit
				No.1	
<b>Hydrofluorocarbon (HFCs)</b>					
HFC-125 (C2HF5)	With reference to US EPA 5021A: 2014, analysis was performed by GC/MS.	mg/kg	1	n.d.	-
HFC-134 (C2H2F4)		mg/kg	1	n.d.	-
HFC-134a (CH2FCF3) (CAS No.: 811-97-2)		mg/kg	1	n.d.	-
HFC-143 (CH3F3)		mg/kg	1	n.d.	-
HFC-143a (CH3F3)		mg/kg	1	n.d.	-
HFC-152a (C2H4F2) (CAS No.: 75-37-6)		mg/kg	1	n.d.	-
HFC-227ea (C3HF7) (CAS No.: 431-89-0)		mg/kg	1	n.d.	-
HFC-23 (CHF3) (CAS No.: 75-46-7)		mg/kg	1	n.d.	-
HFC-236ea (C3H2F6) (CAS No.: 431-63-0)		mg/kg	1	n.d.	-
HFC-236fa (CAS No.: 431-63-0)		mg/kg	1	n.d.	-
HFC-245ca (C3H3F5)		mg/kg	1	n.d.	-
HFC-245fa (C3H3F5)		mg/kg	1	n.d.	-
HFC-32 (CH2F2) (CAS No.: 75-10-5)		mg/kg	1	n.d.	-
HFC-365mfc (C4H5F5)		mg/kg	1	n.d.	-
HFC-43-10mee (C5H2F10)		mg/kg	1	n.d.	-
HFC-41 (CH3F) (CAS No.: 593-53-3)		mg/kg	1	n.d.	-
<b>Perfluorocarbon (PFCs)</b>					
Fluorocarbon 116 (CAS No.: 76-16-4)	With reference to US EPA 5021A: 2014, analysis was performed by GC/MS.	mg/kg	1	n.d.	-
1,4-dihydrooctafluorobutane (CAS No.: 377-36-6)		mg/kg	1	n.d.	-
2-Perfluoromethylpentane (CAS No.: 355-04-4)		mg/kg	1	n.d.	-
Decafluorobutane (CAS No.: 355-25-9)		mg/kg	1	n.d.	-
Freon 14 (CAS No.: 75-73-0)		mg/kg	1	n.d.	-
Freon 218 (CAS No.: 76-19-7)		mg/kg	1	n.d.	-
Nonafluor-2-(trifluoromethyl)butane (CAS No.: 594-91-2)		mg/kg	1	n.d.	-
Perfluor-1-butene (CAS No.: 357-26-6)		mg/kg	1	n.d.	-
Perfluorisobutene (CAS No.: 382-21-8)		mg/kg	1	n.d.	-
Perfluorohexane (CAS No.: 355-42-0)		mg/kg	1	n.d.	-
Perfluoro-n-pentane (CAS No.: 678-26-2)		mg/kg	1	n.d.	-
Freon C318 (CAS No.: 115-25-3)		mg/kg	1	n.d.	-

This document is issued by the Company subject to its General Conditions of Service printed overleaf, available on request or accessible at <https://www.sgs.com.tw/terms-of-service> and, for electronic format documents, subject to Terms and Conditions for Electronic Documents at <https://www.sgs.com.tw/terms-of-service>. Attention is drawn to the limitation of liability, indemnification and jurisdiction issues defined therein. Any holder of this document is advised that information contained hereon reflects the Company's findings at the time of its intervention only and within the limits of client's instruction, if any. The Company's sole responsibility is to its Client and this document does not exonerate parties to a transaction from exercising all their rights and obligations under the transaction documents. This document cannot be reproduced, except in full, without prior written approval of the Company. Any unauthorized alteration, forgery or falsification of the content or appearance of this document is unlawful and offenders may be prosecuted to the fullest extent of the law. Unless otherwise stated the results shown in this test report refer only to the sample(s) tested.

# Test Report

No.: EKR20C01802

Date: 11-Jan-2021

Page: 7 of 30

FORMOSA PLASTICS CORPORATION

NO. 1-1, SHIH-WHA 1ST RD., LIN-YUAN DISTRICT, KAOHSIUNG CITY 832, TAIWAN (R. O. C.)

Test Item(s)	Method	Unit	MDL	Result	Limit	
				No.1		
<b>Chlorofluorocarbons (CFCs)</b>						
CFC-11 (CAS No.: 75-69-4)	With reference to US EPA 5021A: 2014, analysis was performed by GC/MS.	mg/kg	1	n.d.	-	
CFC-12 (CAS No.: 75-71-8)		mg/kg	1	n.d.	-	
CFC-13 (CAS No.: 75-72-9)		mg/kg	1	n.d.	-	
CFC-111 (CAS No.: 354-56-3)		mg/kg	1	n.d.	-	
CFC-112 (CAS No.: 76-12-0)		mg/kg	1	n.d.	-	
CFC-113 (CAS No.: 76-13-1)		mg/kg	1	n.d.	-	
CFC-114 (CAS No.: 76-14-2)		mg/kg	1	n.d.	-	
CFC-115 (CAS No.: 76-15-3)		mg/kg	1	n.d.	-	
CFC-211 (CAS No.: 422-78-6)		mg/kg	1	n.d.	-	
CFC-212 (CAS No.: 3182-26-1)		mg/kg	1	n.d.	-	
CFC-213 (CAS No.: 2354-06-5)		mg/kg	1	n.d.	-	
CFC-214 (CAS No.: 29255-31-0)		mg/kg	1	n.d.	-	
CFC-215 (CAS No.: 4259-43-2)		mg/kg	1	n.d.	-	
CFC-216 (CAS No.: 661-97-2)		mg/kg	1	n.d.	-	
CFC-217 (CAS No.: 422-86-6)		mg/kg	1	n.d.	-	
<b>Hydrochlorofluorocarbons (HCFCs)</b>						
HCFC-21 (CAS No.: 75-43-4)		With reference to US EPA 5021A: 2014, analysis was performed by GC/MS.	mg/kg	1	n.d.	-
HCFC-22 (CAS No.: 75-45-6)	mg/kg		1	n.d.	-	
HCFC-31 (CAS No.: 593-70-4)	mg/kg		1	n.d.	-	
HCFC-121 (CAS No.: 354-14-3)	mg/kg		1	n.d.	-	
HCFC-122 (CAS No.: 354-21-2)	mg/kg		1	n.d.	-	
HCFC-123 (CAS No.: 306-83-2)	mg/kg		1	n.d.	-	
HCFC-124 (CAS No.: 2837-89-0)	mg/kg		1	n.d.	-	
HCFC-131 (CAS No.: 359-28-4)	mg/kg		1	n.d.	-	
HCFC-141b (CAS No.: 1717-00-6)	mg/kg		1	n.d.	-	
HCFC-221 (CAS No.: 422-26-4)	mg/kg		1	n.d.	-	
HCFC-222 (CAS No.: 422-49-1)	mg/kg		1	n.d.	-	
HCFC-223 (CAS No.: 422-52-6)	mg/kg		1	n.d.	-	
HCFC-224 (CAS No.: 422-54-8)	mg/kg		1	n.d.	-	
HCFC-225ca (CAS No.: 422-56-0)	mg/kg		1	n.d.	-	
HCFC-225cb (CAS No.: 507-55-1)	mg/kg		1	n.d.	-	
HCFC-226 (CAS No.: 431-87-8)	mg/kg		1	n.d.	-	
HCFC-231 (CAS No.: 421-94-3)	mg/kg		1	n.d.	-	
HCFC-232 (CAS No.: 460-89-9)	mg/kg		1	n.d.	-	
HCFC-233 (CAS No.: 7125-84-0)	mg/kg		1	n.d.	-	

This document is issued by the Company subject to its General Conditions of Service printed overleaf, available on request or accessible at <https://www.sgs.com.tw/terms-of-service> and, for electronic format documents, subject to Terms and Conditions for Electronic Documents at <https://www.sgs.com.tw/terms-of-service>. Attention is drawn to the limitation of liability, indemnification and jurisdiction issues defined therein. Any holder of this document is advised that information contained hereon reflects the Company's findings at the time of its intervention only and within the limits of client's instruction, if any. The Company's sole responsibility is to its Client and this document does not exonerate parties to a transaction from exercising all their rights and obligations under the transaction documents. This document cannot be reproduced, except in full, without prior written approval of the Company. Any unauthorized alteration, forgery or falsification of the content or appearance of this document is unlawful and offenders may be prosecuted to the fullest extent of the law. Unless otherwise stated the results shown in this test report refer only to the sample(s) tested.

# Test Report

No.: EKR20C01802

Date: 11-Jan-2021

Page: 8 of 30

FORMOSA PLASTICS CORPORATION

NO. 1-1, SHIH-WHA 1ST RD., LIN-YUAN DISTRICT, KAOHSIUNG CITY 832, TAIWAN (R. O. C.)

Test Item(s)	Method	Unit	MDL	Result	Limit
				No.1	
HCFC-234 (CAS No.: 425-94-5)	With reference to US EPA 5021A: 2014, analysis was performed by GC/MS.	mg/kg	1	n.d.	-
HCFC-235 (CAS No.: 460-92-4)		mg/kg	1	n.d.	-
HCFC-241 (CAS No.: 666-27-3)		mg/kg	1	n.d.	-
HCFC-242 (CAS No.: 460-63-9)		mg/kg	1	n.d.	-
HCFC-243 (CAS No.: 460-69-5)		mg/kg	1	n.d.	-
HCFC-244		mg/kg	1	n.d.	-
HCFC-251 (CAS No.: 421-41-0)		mg/kg	1	n.d.	-
HCFC-252 (CAS No.: 819-00-1)		mg/kg	1	n.d.	-
HCFC-253 (CAS No.: 460-35-5)		mg/kg	1	n.d.	-
HCFC-261 (CAS No.: 420-97-3)		mg/kg	1	n.d.	-
HCFC-262 (CAS No.: 421-02-03)		mg/kg	1	n.d.	-
HCFC-271 (CAS No.: 430-55-7)		mg/kg	1	n.d.	-
HCFC-133a (CAS No.: 75-88-7)		mg/kg	1	n.d.	-
HCFC-142b (CAS No.: 75-68-3)		mg/kg	1	n.d.	-
HCFC-132b (CAS No.: 1649-08-7)		mg/kg	1	n.d.	-
<b>Halons</b>					
Halon-1211 (CAS No.: 353-59-3)	With reference to US EPA 5021A: 2014, analysis was performed by GC/MS.	mg/kg	1	n.d.	-
Halon-1301 (CAS No.: 75-63-8)		mg/kg	1	n.d.	-
Halon-2402 (CAS No.: 124-73-2)		mg/kg	1	n.d.	-
<b>Hydrobromofluorocarbons (HBFCs)</b>					
HBFC-121B4 (C2HFBr4)	With reference to US EPA 5021A: 2014, analysis was performed by GC/MS.	mg/kg	1	n.d.	-
HBFC-122B3 (C2HF2Br3)		mg/kg	1	n.d.	-
HBFC-123B2 (C2HF3Br2)		mg/kg	1	n.d.	-
HBFC-124B1 (C2HF4Br)		mg/kg	1	n.d.	-
HBFC-131B3 (C2H2FBr3)		mg/kg	1	n.d.	-
HBFC-132B2 (C2H2F2Br2)		mg/kg	1	n.d.	-
HBFC-133B1 (C2H2F3Br)		mg/kg	1	n.d.	-
HBFC-141B2 (C2H3FBr2)		mg/kg	1	n.d.	-
HBFC-142B1 (C2H3F2Br)		mg/kg	1	n.d.	-
HBFC-151B1 (C2H4FBr)		mg/kg	1	n.d.	-
HBFC-21B2 (CHFB2) (CAS No.: 1868-53-7)		mg/kg	1	n.d.	-
HBFC-221B6 (C3HFBr6)		mg/kg	1	n.d.	-
HBFC-222B5 (C3HF2Br5)		mg/kg	1	n.d.	-
HBFC-223B4 (C3HF3Br4)		mg/kg	1	n.d.	-
HBFC-224B3 (C3HF4Br3)		mg/kg	1	n.d.	-

This document is issued by the Company subject to its General Conditions of Service printed overleaf, available on request or accessible at <https://www.sgs.com.tw/terms-of-service> and, for electronic format documents, subject to Terms and Conditions for Electronic Documents at <https://www.sgs.com.tw/terms-of-service>. Attention is drawn to the limitation of liability, indemnification and jurisdiction issues defined therein. Any holder of this document is advised that information contained hereon reflects the Company's findings at the time of its intervention only and within the limits of client's instruction, if any. The Company's sole responsibility is to its Client and this document does not exonerate parties to a transaction from exercising all their rights and obligations under the transaction documents. This document cannot be reproduced, except in full, without prior written approval of the Company. Any unauthorized alteration, forgery or falsification of the content or appearance of this document is unlawful and offenders may be prosecuted to the fullest extent of the law. Unless otherwise stated the results shown in this test report refer only to the sample(s) tested.



# Test Report

No.: EKR20C01802

Date: 11-Jan-2021

Page: 9 of 30

FORMOSA PLASTICS CORPORATION

NO. 1-1, SHIH-WHA 1ST RD., LIN-YUAN DISTRICT, KAOHSIUNG CITY 832, TAIWAN (R. O. C.)

Test Item(s)	Method	Unit	MDL	Result	Limit
				No.1	
HBFC-225B2 (C3HF5Br2)	With reference to US EPA 5021A: 2014, analysis was performed by GC/MS.	mg/kg	1	n.d.	-
HBFC-226B1 (C3HF6Br)		mg/kg	1	n.d.	-
HBFC-22B1 (CHF2Br) (CAS No.: 1511-62-2)		mg/kg	1	n.d.	-
HBFC-231B5 (C3H2FBr5)		mg/kg	1	n.d.	-
HBFC-232B4 (C3H2F2Br4)		mg/kg	1	n.d.	-
HBFC-233B3 (C3H2F3Br3)		mg/kg	1	n.d.	-
HBFC-234B2 (C3H2F4Br2)		mg/kg	1	n.d.	-
HBFC-235B1 (C3H2F5Br)		mg/kg	1	n.d.	-
HBFC-241B4 (C3H3FBr4)		mg/kg	1	n.d.	-
HBFC-242B3 (C3H3F2Br3)		mg/kg	1	n.d.	-
HBFC-243B2 (C3H3F3Br2)		mg/kg	1	n.d.	-
HBFC-244B1 (C3H3F4Br)		mg/kg	1	n.d.	-
HBFC-251B3 (C3H4FBr3)		mg/kg	1	n.d.	-
HBFC-252B2 (C3H4F2Br2)		mg/kg	1	n.d.	-
HBFC-253B1 (C3H4F3Br)		mg/kg	1	n.d.	-
HBFC-261B2 (C3H5FBr2)		mg/kg	1	n.d.	-
HBFC-262B1 (C3H5F2Br)		mg/kg	1	n.d.	-
HBFC-271B1 (C3H6FBr)		mg/kg	1	n.d.	-
HBFC-31B1 (CH2FBr) (CAS No.: 373-52-4)		mg/kg	1	n.d.	-
<b>Chlorinate hydrocarbon (CHCs)</b>					
Carbon tetrachloride (CAS No.: 56-23-5)	With reference to US EPA 5021A: 2014, analysis was performed by GC/MS.	mg/kg	1	n.d.	-
1,1,1-Trichloroethane (CAS No.: 71-55-6)		mg/kg	1	n.d.	-
1,1,1,2-Tetrachloroethane (CAS No.: 630-20-6)		mg/kg	1	n.d.	-
1,1,2,2-Tetrachloroethane (CAS No.: 79-34-5)		mg/kg	1	n.d.	-
1,1,2-Trichloroethane (CAS No.: 79-00-5)		mg/kg	1	n.d.	-
1,1-Dichloroethane (CAS No.: 75-34-3)		mg/kg	1	n.d.	-
1,1-Dichloroethylene (CAS No.: 75-35-4)		mg/kg	1	n.d.	-

This document is issued by the Company subject to its General Conditions of Service printed overleaf, available on request or accessible at <https://www.sgs.com.tw/terms-of-service> and, for electronic format documents, subject to Terms and Conditions for Electronic Documents at <https://www.sgs.com.tw/terms-of-service>. Attention is drawn to the limitation of liability, indemnification and jurisdiction issues defined therein. Any holder of this document is advised that information contained hereon reflects the Company's findings at the time of its intervention only and within the limits of client's instruction, if any. The Company's sole responsibility is to its Client and this document does not exonerate parties to a transaction from exercising all their rights and obligations under the transaction documents. This document cannot be reproduced, except in full, without prior written approval of the Company. Any unauthorized alteration, forgery or falsification of the content or appearance of this document is unlawful and offenders may be prosecuted to the fullest extent of the law. Unless otherwise stated the results shown in this test report refer only to the sample(s) tested.

# Test Report

No.: EKR20C01802

Date: 11-Jan-2021

Page: 10 of 30

FORMOSA PLASTICS CORPORATION

NO. 1-1, SHIH-WHA 1ST RD., LIN-YUAN DISTRICT, KAOHSIUNG CITY 832, TAIWAN (R. O. C.)

Test Item(s)	Method	Unit	MDL	Result	Limit
				No.1	
1,1-Dichloropropene (CAS No.: 563-58-6)	With reference to US EPA 5021A: 2014, analysis was performed by GC/MS.	mg/kg	1	n.d.	-
1,2,3-Trichloropropane (CAS No.: 96-18-4)		mg/kg	1	n.d.	-
1,2-Dichloroethane (CAS No.: 107-06-2)		mg/kg	1	n.d.	-
1,2-Dichloropropane (CAS No.: 78-87-5)		mg/kg	1	n.d.	-
1,3-Dichloropropane (CAS No.: 142-28-9)		mg/kg	1	n.d.	-
2,2-Dichloropropane (CAS No.: 594-20-7)		mg/kg	1	n.d.	-
Chloroform (CAS No.: 67-66-3)		mg/kg	1	n.d.	-
Chloromethane (CAS No.: 74-87-3)		mg/kg	1	n.d.	-
cis-1,2-Dichloroethene (CAS No.: 156-59-2)		mg/kg	1	n.d.	-
cis-1,3-Dichloropropene (CAS No.: 10061-01-5)		mg/kg	1	n.d.	-
Dichloromethane (CAS No.: 75-09-2)		mg/kg	1	n.d.	-
Tetrachloroethene (CAS No.: 127-18-4)		mg/kg	1	n.d.	-
trans-1,2-Dichloroethene (CAS No.: 156-60-5)		mg/kg	1	n.d.	-
trans-1,3-Dichloropropene (CAS No.: 10061-02-6)		mg/kg	1	n.d.	-
Trichloroethylene (CAS No.: 79-01-6)		mg/kg	1	n.d.	-
Chloroethane (CAS No.: 75-00-3)		mg/kg	1	n.d.	-
Hexachlorobutadiene (CAS No.: 87-68-3)	mg/kg	1	n.d.	-	
Bromochloromethane (CAS No.: 74-97-5)	mg/kg	1	n.d.	-	

This document is issued by the Company subject to its General Conditions of Service printed overleaf, available on request or accessible at <https://www.sgs.com.tw/terms-of-service> and, for electronic format documents, subject to Terms and Conditions for Electronic Documents at <https://www.sgs.com.tw/terms-of-service>. Attention is drawn to the limitation of liability, indemnification and jurisdiction issues defined therein. Any holder of this document is advised that information contained hereon reflects the Company's findings at the time of its intervention only and within the limits of client's instruction, if any. The Company's sole responsibility is to its Client and this document does not exonerate parties to a transaction from exercising all their rights and obligations under the transaction documents. This document cannot be reproduced, except in full, without prior written approval of the Company. Any unauthorized alteration, forgery or falsification of the content or appearance of this document is unlawful and offenders may be prosecuted to the fullest extent of the law. Unless otherwise stated the results shown in this test report refer only to the sample(s) tested.

# Test Report

No.: EKR20C01802

Date: 11-Jan-2021

Page: 11 of 30

FORMOSA PLASTICS CORPORATION

NO. 1-1, SHIH-WHA 1ST RD., LIN-YUAN DISTRICT, KAOHSIUNG CITY 832, TAIWAN (R. O. C.)

Test Item(s)	Method	Unit	MDL	Result	Limit
				No.1	
Sulfur hexafluoride (CAS No.: 2551-62-4)	With reference to US EPA 5021A: 2014, analysis was performed by GC/MS.	mg/kg	1	n.d.	-
Bromomethane (CAS No.: 74-83-9)	With reference to US EPA 5021A: 2014, analysis was performed by GC/MS.	mg/kg	1	n.d.	-
Dimethyl fumarate (DMFu) (CAS No.: 624-49-7)	With reference to US EPA 3550C: 2007, analysis was performed by GC/MS.	mg/kg	0.1	n.d.	-
Tris(2-chloroethyl) phosphate (TCEP) (CAS No.: 115-96-8)	With reference to US EPA 3550C: 2007, analysis was performed by GC/MS.	mg/kg	5	n.d.	-
Tris(1-chloro-2-propyl) phosphate (TCPP) (CAS No.: 13674-84-5)		mg/kg	5	n.d.	-
Tris(1,3-dichloro-2-propyl) phosphate (CAS No.: 13674-87-8)		mg/kg	5	n.d.	-
Hexabromocyclododecane (HBCDD) and all major diastereoisomers identified ( $\alpha$ -HBCDD, $\beta$ -HBCDD, $\gamma$ -HBCDD) (CAS No.: 25637-99-4, 3194-55-6 (134237-51-7, 134237-50-6, 134237-52-8))	With reference to IEC 62321: 2008, analysis was performed by GC/MS.	mg/kg	5	n.d.	-
Butyl benzyl phthalate (BBP) (CAS No.: 85-68-7)	With reference to IEC 62321-8: 2017, analysis was performed by GC/MS.	mg/kg	50	n.d.	1000
Dibutyl phthalate (DBP) (CAS No.: 84-74-2)		mg/kg	50	n.d.	1000
Di-(2-ethylhexyl) phthalate (DEHP) (CAS No.: 117-81-7)		mg/kg	50	n.d.	1000
Diisobutyl phthalate (DIBP) (CAS No.: 84-69-5)		mg/kg	50	n.d.	1000
Diisodecyl phthalate (DIDP) (CAS No.: 26761-40-0, 68515-49-1)		mg/kg	50	n.d.	-
Diisononyl phthalate (DINP) (CAS No.: 28553-12-0, 68515-48-0)		mg/kg	50	n.d.	-
Di-n-octyl phthalate (DNOP) (CAS No.: 117-84-0)		mg/kg	50	n.d.	-
Di-n-hexyl phthalate (DNHP) (CAS No.: 84-75-3)		mg/kg	50	n.d.	-
Radioactive substances	Geiger counter	$\mu$ Sv/hour	-	Negative*	-

This document is issued by the Company subject to its General Conditions of Service printed overleaf, available on request or accessible at <https://www.sgs.com.tw/terms-of-service> and, for electronic format documents, subject to Terms and Conditions for Electronic Documents at <https://www.sgs.com.tw/terms-of-service>. Attention is drawn to the limitation of liability, indemnification and jurisdiction issues defined therein. Any holder of this document is advised that information contained hereon reflects the Company's findings at the time of its intervention only and within the limits of client's instruction, if any. The Company's sole responsibility is to its Client and this document does not exonerate parties to a transaction from exercising all their rights and obligations under the transaction documents. This document cannot be reproduced, except in full, without prior written approval of the Company. Any unauthorized alteration, forgery or falsification of the content or appearance of this document is unlawful and offenders may be prosecuted to the fullest extent of the law. Unless otherwise stated the results shown in this test report refer only to the sample(s) tested.

# Test Report

No.: EKR20C01802

Date: 11-Jan-2021

Page: 12 of 30

FORMOSA PLASTICS CORPORATION

NO. 1-1, SHIH-WHA 1ST RD., LIN-YUAN DISTRICT, KAOHSIUNG CITY 832, TAIWAN (R. O. C.)

Test Item(s)	Method	Unit	MDL	Result	Limit
				No.1	
<b>Polycyclic Aromatic Hydrocarbons</b>					
Benzo[a]pyrene (CAS No.: 50-32-8)	With reference to AfPS GS 2019:01 PAK, analysis was performed by GC/MS.	mg/kg	0.2	n.d.	-
Benzo[e]pyrene (CAS No.: 192-97-2)		mg/kg	0.2	n.d.	-
Benzo[a]anthracene (CAS No.: 56-55-3)		mg/kg	0.2	n.d.	-
Benzo[b]fluoranthene (CAS No.: 205-99-2)		mg/kg	0.2	n.d.	-
Benzo[j]fluoranthene (CAS No.: 205-82-3)		mg/kg	0.2	n.d.	-
Benzo[k]fluoranthene (CAS No.: 207-08-9)		mg/kg	0.2	n.d.	-
Chrysene (CAS No.: 218-01-9)		mg/kg	0.2	n.d.	-
Dibenzo[a,h]anthracene (CAS No.: 53-70-3)		mg/kg	0.2	n.d.	-
Benzo[g,h,i]perylene (CAS No.: 191-24-2)		mg/kg	0.2	n.d.	-
Indeno[1,2,3-c,d]pyrene (CAS No.: 193-39-5)		mg/kg	0.2	n.d.	-
Anthracene (CAS No.: 120-12-7)		mg/kg	0.2	n.d.	-
Fluoranthene (CAS No.: 206-44-0)		mg/kg	0.2	n.d.	-
Phenanthrene (CAS No.: 85-01-8)		mg/kg	0.2	n.d.	-
Pyrene (CAS No.: 129-00-0)		mg/kg	0.2	n.d.	-
Naphthalene (CAS No.: 91-20-3)		mg/kg	0.2	n.d.	-
<b>Sum of 15 PAHs</b>	-	mg/kg	-	n.d.	Δ
Acenaphthylene (CAS No.: 208-96-8)	With reference to AfPS GS 2019:01 PAK, analysis was performed by GC/MS.	mg/kg	0.2	n.d.	-
Acenaphthene (CAS No.: 83-32-9)		mg/kg	0.2	n.d.	-
Fluorene (CAS No.: 86-73-7)		mg/kg	0.2	n.d.	-
Perfluorohexane-1-sulphonic acid and its salts (PFHxS) (CAS No.: 355-46-4)	With reference to CEN/TS 15968: 2010, analysis was performed by LC/MS/MS.	mg/kg	0.01	n.d.	-
Bisphenol A (CAS No.: 80-05-7)	With reference to RSTS-CHEM-239-1, analysis was performed by LC/MS/MS.	mg/kg	1	n.d.	-
Perchlorates (CAS No.: 7601-90-3)	Analysis was performed by IC.	µg/g	0.006	n.d.	-
Nickel release	With reference to EN 1811: 2011+ A1: 2015, analysis was performed by ICP-OES.	µg/cm <sup>2</sup> /week	0.1	n.d.	0.88 (*N)
				n.d.	
				n.d.	

This document is issued by the Company subject to its General Conditions of Service printed overleaf, available on request or accessible at <https://www.sgs.com.tw/terms-of-service> and, for electronic format documents, subject to Terms and Conditions for Electronic Documents at <https://www.sgs.com.tw/terms-of-service>. Attention is drawn to the limitation of liability, indemnification and jurisdiction issues defined therein. Any holder of this document is advised that information contained hereon reflects the Company's findings at the time of its intervention only and within the limits of client's instruction, if any. The Company's sole responsibility is to its Client and this document does not exonerate parties to a transaction from exercising all their rights and obligations under the transaction documents. This document cannot be reproduced, except in full, without prior written approval of the Company. Any unauthorized alteration, forgery or falsification of the content or appearance of this document is unlawful and offenders may be prosecuted to the fullest extent of the law. Unless otherwise stated the results shown in this test report refer only to the sample(s) tested.

# Test Report

No.: EKR20C01802

Date: 11-Jan-2021

Page: 13 of 30

FORMOSA PLASTICS CORPORATION

NO. 1-1, SHIH-WHA 1ST RD., LIN-YUAN DISTRICT, KAOHSIUNG CITY 832, TAIWAN (R. O. C.)

**Note :**

1. mg/kg = ppm ; 0.1wt% = 1000ppm
2. MDL = Method Detection Limit
3. n.d. = Not Detected ( Less than MDL)
4. "-" = Not Regulated
5. \*\*= Qualitative analysis (No Unit)
6. Negative = Undetectable ; Positive = Detectable
7. Testing range of asbestos qualitative analysis is from less than 0.1% to 100%. The judgment criterion: asbestos fibers being found is shown as "Positive"; asbestos fibers not being found is shown as "Negative".
8. PFOS and its salts including :  
CAS No.: 29081-56-9, 2795-39-3, 29457-72-5, 70225-14-8, 56773-42-3, 251099-16-8, 307-35-7.
9. PFOA and its salts including :  
CAS No.: 3825-26-1, 335-95-5, 2395-00-8, 335-93-3, 335-66-0.
10. ▲ : The MDL was evaluated for element / tested substance.

Conversion Formula :  $AX = A \times F$

AX	A	F
Diarsenic pentaoxide	Arsenic	1.5339
Diarsenic trioxide	Arsenic	1.3203
Beryllium oxide (BeO)	Beryllium	2.7753

Parameter Conversion Table : [https://eecloud.sgs.com/Region\\_TW/DocDownload.aspx#otherDoc](https://eecloud.sgs.com/Region_TW/DocDownload.aspx#otherDoc)

11. Negative\*/Positive\*: The test result of Geiger counter is from comparison between test outcome and environment background. In general, there is little radiation dose existing in environment. (Radiation dose from environment background usually less than or equal to 0.2μSv/hr)  
The test result less than environment background was shown as Negative\*; the result greater than environment background was shown as Positive\*.

12. μg/cm<sup>2</sup>/week = microgram per square centimeter per week

No.	Sample Area (cm <sup>2</sup> )	Volume of Test Solution (ml)
1	7.60	10

(\*N) : The limit is based on EN 1811:2011+A1:2015.

13. The statement of compliance conformity is based on comparison of testing results and limits.

This document is issued by the Company subject to its General Conditions of Service printed overleaf, available on request or accessible at <https://www.sgs.com.tw/terms-of-service> and, for electronic format documents, subject to Terms and Conditions for Electronic Documents at <https://www.sgs.com.tw/terms-of-service>. Attention is drawn to the limitation of liability, indemnification and jurisdiction issues defined therein. Any holder of this document is advised that information contained hereon reflects the Company's findings at the time of its intervention only and within the limits of client's instruction, if any. The Company's sole responsibility is to its Client and this document does not exonerate parties to a transaction from exercising all their rights and obligations under the transaction documents. This document cannot be reproduced, except in full, without prior written approval of the Company. Any unauthorized alteration, forgery or falsification of the content or appearance of this document is unlawful and offenders may be prosecuted to the fullest extent of the law. Unless otherwise stated the results shown in this test report refer only to the sample(s) tested.

FORMOSA PLASTICS CORPORATION

NO. 1-1, SHIH-WHA 1ST RD., LIN-YUAN DISTRICT, KAOHSIUNG CITY 832, TAIWAN (R. O. C.)

**△ AfPS (German commission for Product Safety): GS PAHs requirements**

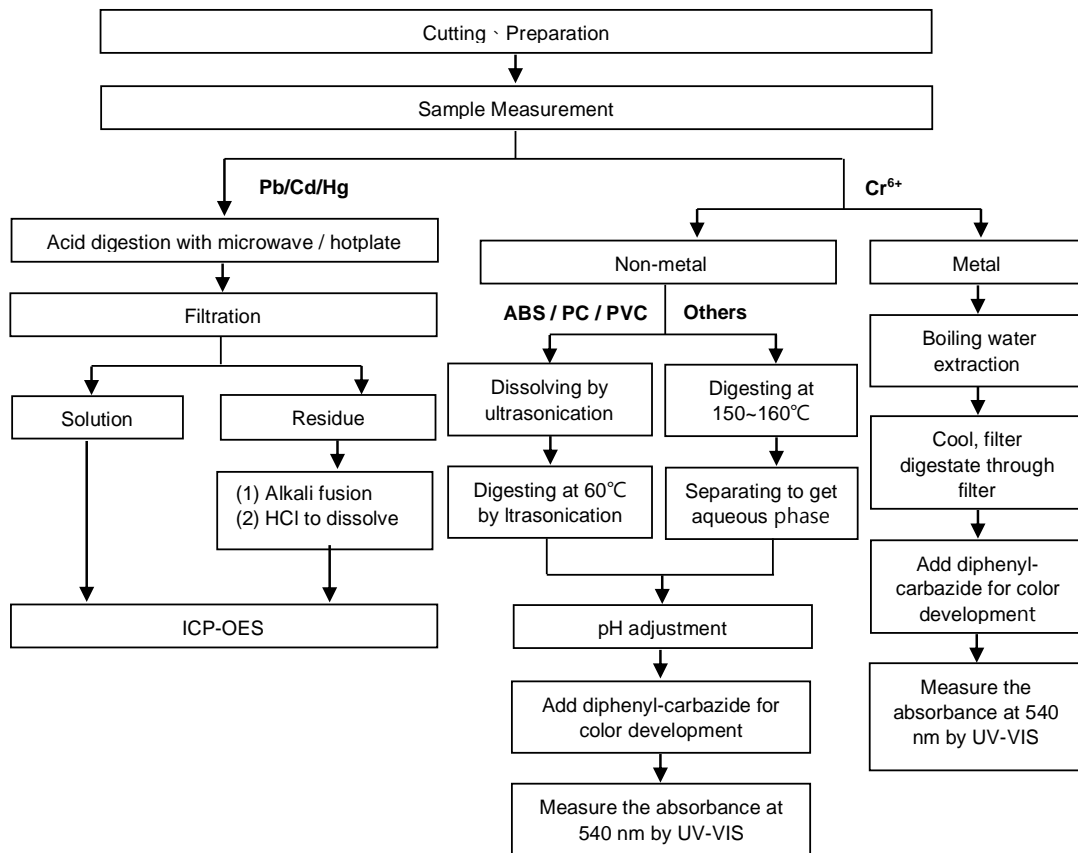
Parameter	Category 1	Category 2		Category 3	
	Materials intended to be placed in the mouth, or materials in toys (Directive 2009/48/EC) or articles for children up to 3 years of age with intended long-term skin contact (> 30 seconds).	Materials that are not in Category 1, with intended or foreseeable long-term skin contact (> 30 seconds) or short-term repetitive contact with the skin.		Materials not covered by Category 1 or 2, with intended or foreseeable short-term skin contact ( $\leq 30$ seconds).	
		a. Use by children under 14	b. Other consumer products	a. Use by children under 14	b. Other consumer products
Naphthalene	< 1	< 2		< 10	
Phenanthrene	< 1 Sum	< 5 Sum	< 10 Sum	< 20 Sum	< 50 Sum
Anthracene					
Fluoranthene					
Pyrene					
Benzo[a]anthracene	< 0.2	< 0.2	< 0.5	< 0.5	< 1
Chrysene	< 0.2	< 0.2	< 0.5	< 0.5	< 1
Benzo[b]fluoranthene	< 0.2	< 0.2	< 0.5	< 0.5	< 1
Benzo[j]fluoranthene	< 0.2	< 0.2	< 0.5	< 0.5	< 1
Benzo[k]fluoranthene	< 0.2	< 0.2	< 0.5	< 0.5	< 1
Benzo[a]pyrene	< 0.2	< 0.2	< 0.5	< 0.5	< 1
Benzo[e]pyrene	< 0.2	< 0.2	< 0.5	< 0.5	< 1
Indeno[1,2,3-c,d]pyrene	< 0.2	< 0.2	< 0.5	< 0.5	< 1
Dibenzo[a,h]anthracene	< 0.2	< 0.2	< 0.5	< 0.5	< 1
Benzo[g,h,i]perylene	< 0.2	< 0.2	< 0.5	< 0.5	< 1
Sum of 15 PAH	< 1	< 5	< 10	< 20	< 50

Unit : mg/kg

This document is issued by the Company subject to its General Conditions of Service printed overleaf, available on request or accessible at <https://www.sgs.com.tw/terms-of-service> and, for electronic format documents, subject to Terms and Conditions for Electronic Documents at <https://www.sgs.com.tw/terms-of-service>. Attention is drawn to the limitation of liability, indemnification and jurisdiction issues defined therein. Any holder of this document is advised that information contained hereon reflects the Company's findings at the time of its intervention only and within the limits of client's instruction, if any. The Company's sole responsibility is to its Client and this document does not exonerate parties to a transaction from exercising all their rights and obligations under the transaction documents. This document cannot be reproduced, except in full, without prior written approval of the Company. Any unauthorized alteration, forgery or falsification of the content or appearance of this document is unlawful and offenders may be prosecuted to the fullest extent of the law. Unless otherwise stated the results shown in this test report refer only to the sample(s) tested.

### Analytical flow chart of Heavy Metal

These samples were dissolved totally by pre-conditioning method according to below flow chart. ( Cr<sup>6+</sup> test method excluded )



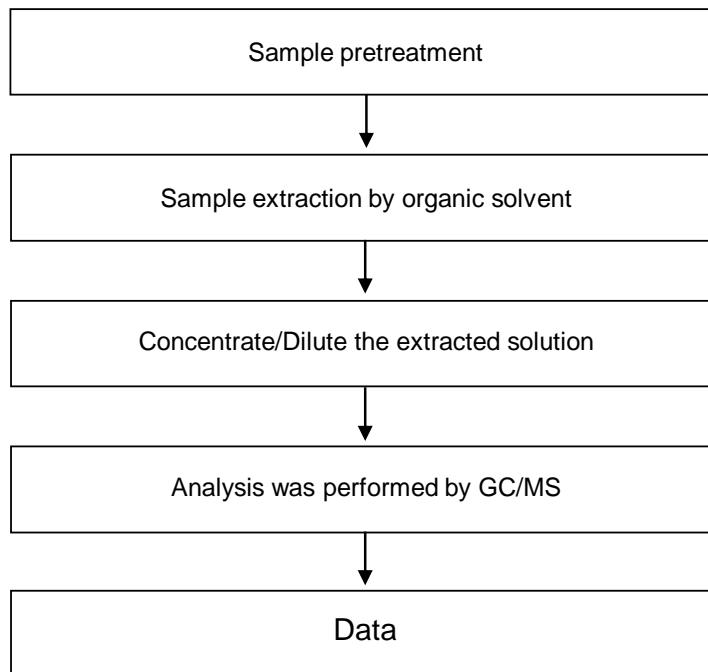
This document is issued by the Company subject to its General Conditions of Service printed overleaf, available on request or accessible at <https://www.sgs.com.tw/terms-of-service> and, for electronic format documents, subject to Terms and Conditions for Electronic Documents at <https://www.sgs.com.tw/terms-of-service>. Attention is drawn to the limitation of liability, indemnification and jurisdiction issues defined therein. Any holder of this document is advised that information contained hereon reflects the Company's findings at the time of its intervention only and within the limits of client's instruction, if any. The Company's sole responsibility is to its Client and this document does not exonerate parties to a transaction from exercising all their rights and obligations under the transaction documents. This document cannot be reproduced, except in full, without prior written approval of the Company. Any unauthorized alteration, forgery or falsification of the content or appearance of this document is unlawful and offenders may be prosecuted to the fullest extent of the law. Unless otherwise stated the results shown in this test report refer only to the sample(s) tested.

FORMOSA PLASTICS CORPORATION

NO. 1-1, SHIH-WHA 1ST RD., LIN-YUAN DISTRICT, KAOHSIUNG CITY 832, TAIWAN (R. O. C.)

### Analytical flow chart

\* Apply to: PCBs, PCNs, PCTs, Dimethyl Fumarate



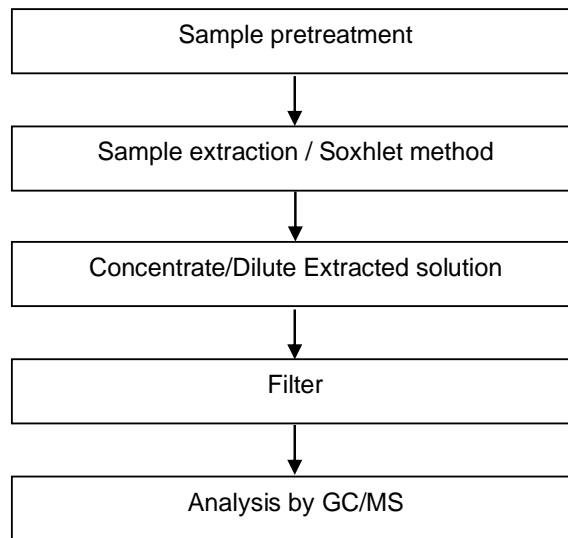
This document is issued by the Company subject to its General Conditions of Service printed overleaf, available on request or accessible at <https://www.sgs.com.tw/terms-of-service> and, for electronic format documents, subject to Terms and Conditions for Electronic Documents at <https://www.sgs.com.tw/terms-of-service>. Attention is drawn to the limitation of liability, indemnification and jurisdiction issues defined therein. Any holder of this document is advised that information contained hereon reflects the Company's findings at the time of its intervention only and within the limits of client's instruction, if any. The Company's sole responsibility is to its Client and this document does not exonerate parties to a transaction from exercising all their rights and obligations under the transaction documents. This document cannot be reproduced, except in full, without prior written approval of the Company. Any unauthorized alteration, forgery or falsification of the content or appearance of this document is unlawful and offenders may be prosecuted to the fullest extent of the law. Unless otherwise stated the results shown in this test report refer only to the sample(s) tested.



FORMOSA PLASTICS CORPORATION

NO. 1-1, SHIH-WHA 1ST RD., LIN-YUAN DISTRICT, KAOHSIUNG CITY 832, TAIWAN (R. O. C.)

### PBB/PBDE analytical FLOW CHART

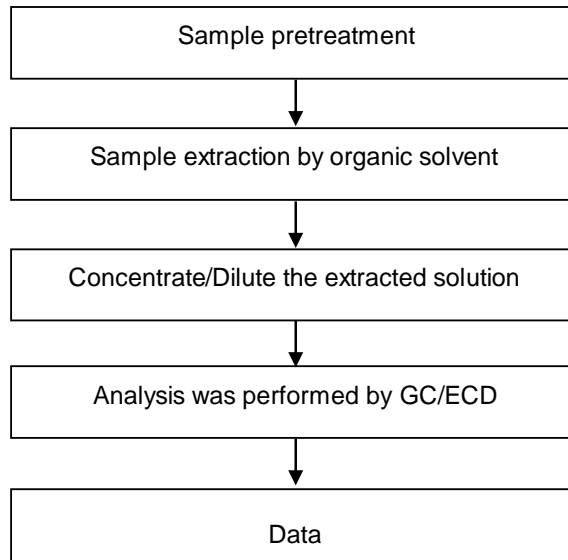


This document is issued by the Company subject to its General Conditions of Service printed overleaf, available on request or accessible at <https://www.sgs.com.tw/terms-of-service> and, for electronic format documents, subject to Terms and Conditions for Electronic Documents at <https://www.sgs.com.tw/terms-of-service>. Attention is drawn to the limitation of liability, indemnification and jurisdiction issues defined therein. Any holder of this document is advised that information contained hereon reflects the Company's findings at the time of its intervention only and within the limits of client's instruction, if any. The Company's sole responsibility is to its Client and this document does not exonerate parties to a transaction from exercising all their rights and obligations under the transaction documents. This document cannot be reproduced, except in full, without prior written approval of the Company. Any unauthorized alteration, forgery or falsification of the content or appearance of this document is unlawful and offenders may be prosecuted to the fullest extent of the law. Unless otherwise stated the results shown in this test report refer only to the sample(s) tested.

FORMOSA PLASTICS CORPORATION

NO. 1-1, SHIH-WHA 1ST RD., LIN-YUAN DISTRICT, KAOHSIUNG CITY 832, TAIWAN (R. O. C.)

### Analytical flow chart - Chlorinated Paraffins

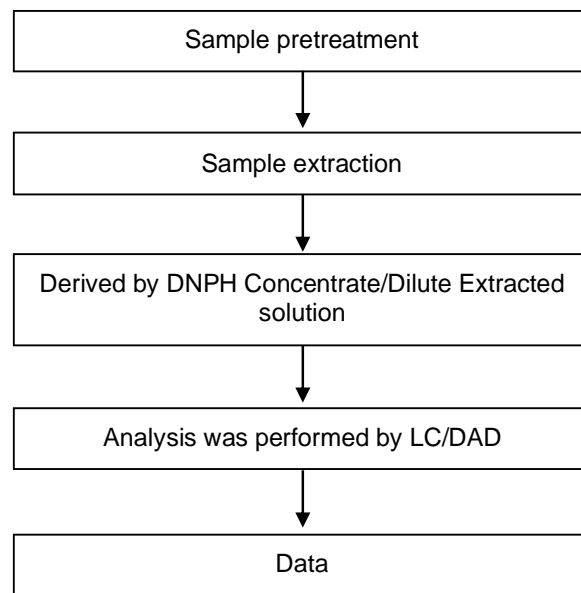


This document is issued by the Company subject to its General Conditions of Service printed overleaf, available on request or accessible at <https://www.sgs.com.tw/terms-of-service> and, for electronic format documents, subject to Terms and Conditions for Electronic Documents at <https://www.sgs.com.tw/terms-of-service>. Attention is drawn to the limitation of liability, indemnification and jurisdiction issues defined therein. Any holder of this document is advised that information contained hereon reflects the Company's findings at the time of its intervention only and within the limits of client's instruction, if any. The Company's sole responsibility is to its Client and this document does not exonerate parties to a transaction from exercising all their rights and obligations under the transaction documents. This document cannot be reproduced, except in full, without prior written approval of the Company. Any unauthorized alteration, forgery or falsification of the content or appearance of this document is unlawful and offenders may be prosecuted to the fullest extent of the law. Unless otherwise stated the results shown in this test report refer only to the sample(s) tested.

FORMOSA PLASTICS CORPORATION

NO. 1-1, SHIH-WHA 1ST RD., LIN-YUAN DISTRICT, KAOHSIUNG CITY 832, TAIWAN (R. O. C.)

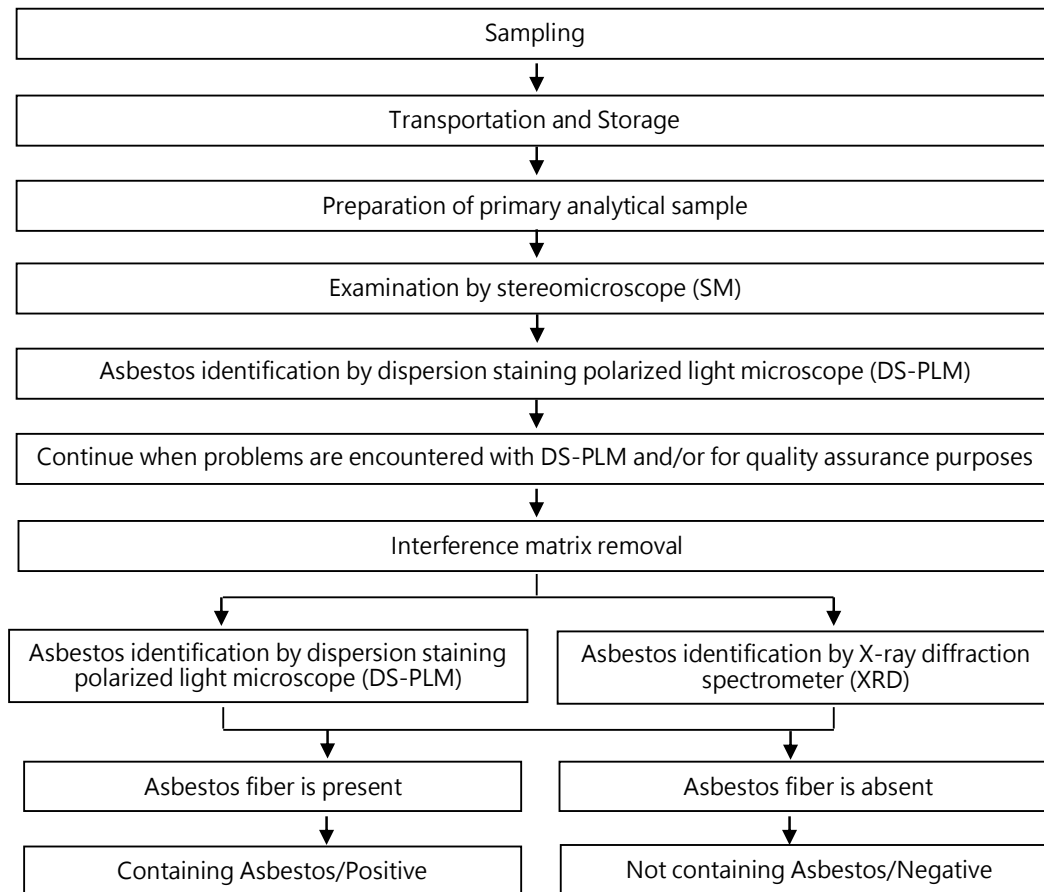
### Analytical flow chart - Formaldehyde



This document is issued by the Company subject to its General Conditions of Service printed overleaf, available on request or accessible at <https://www.sgs.com.tw/terms-of-service> and, for electronic format documents, subject to Terms and Conditions for Electronic Documents at <https://www.sgs.com.tw/terms-of-service>. Attention is drawn to the limitation of liability, indemnification and jurisdiction issues defined therein. Any holder of this document is advised that information contained hereon reflects the Company's findings at the time of its intervention only and within the limits of client's instruction, if any. The Company's sole responsibility is to its Client and this document does not exonerate parties to a transaction from exercising all their rights and obligations under the transaction documents. This document cannot be reproduced, except in full, without prior written approval of the Company. Any unauthorized alteration, forgery or falsification of the content or appearance of this document is unlawful and offenders may be prosecuted to the fullest extent of the law. Unless otherwise stated the results shown in this test report refer only to the sample(s) tested.

### Analysis flow chart for determination of Asbestos

【Reference method: EPA 600/R-93/116】

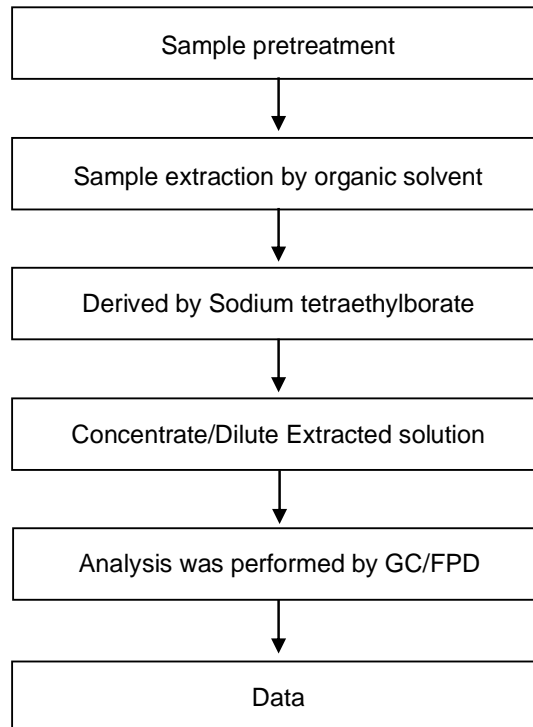


This document is issued by the Company subject to its General Conditions of Service printed overleaf, available on request or accessible at <https://www.sgs.com.tw/terms-of-service> and, for electronic format documents, subject to Terms and Conditions for Electronic Documents at <https://www.sgs.com.tw/terms-of-service>. Attention is drawn to the limitation of liability, indemnification and jurisdiction issues defined therein. Any holder of this document is advised that information contained hereon reflects the Company's findings at the time of its intervention only and within the limits of client's instruction, if any. The Company's sole responsibility is to its Client and this document does not exonerate parties to a transaction from exercising all their rights and obligations under the transaction documents. This document cannot be reproduced, except in full, without prior written approval of the Company. Any unauthorized alteration, forgery or falsification of the content or appearance of this document is unlawful and offenders may be prosecuted to the fullest extent of the law. Unless otherwise stated the results shown in this test report refer only to the sample(s) tested.

FORMOSA PLASTICS CORPORATION

NO. 1-1, SHIH-WHA 1ST RD., LIN-YUAN DISTRICT, KAOHSIUNG CITY 832, TAIWAN (R. O. C.)

### Analytical flow chart - Organic-Tin

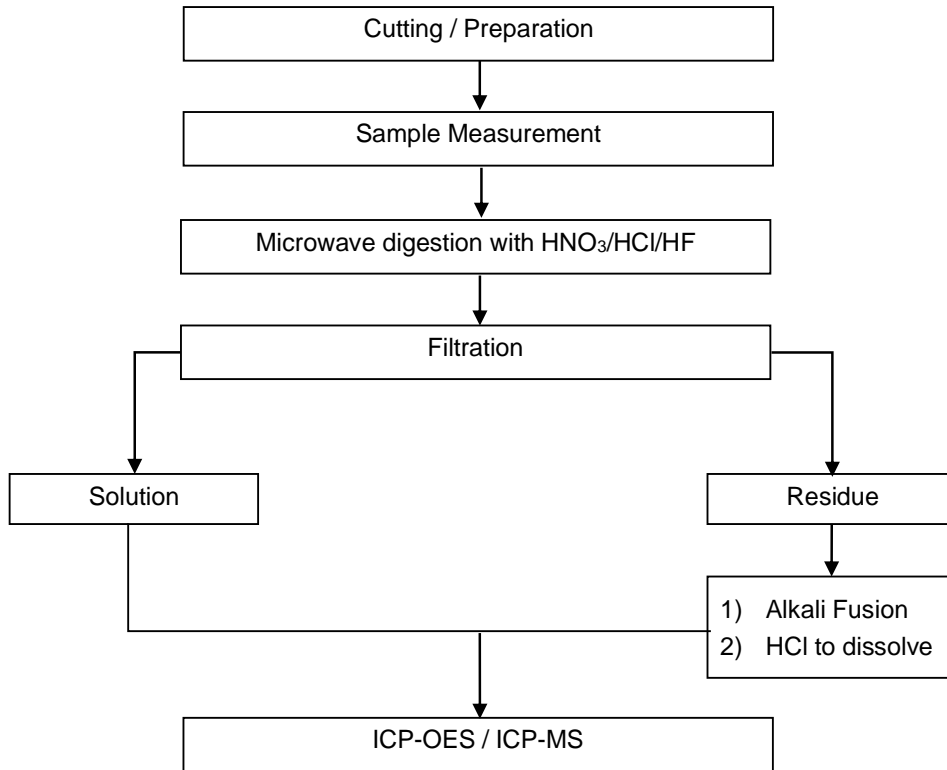


This document is issued by the Company subject to its General Conditions of Service printed overleaf, available on request or accessible at <https://www.sgs.com.tw/terms-of-service> and, for electronic format documents, subject to Terms and Conditions for Electronic Documents at <https://www.sgs.com.tw/terms-of-service>. Attention is drawn to the limitation of liability, indemnification and jurisdiction issues defined therein. Any holder of this document is advised that information contained hereon reflects the Company's findings at the time of its intervention only and within the limits of client's instruction, if any. The Company's sole responsibility is to its Client and this document does not exonerate parties to a transaction from exercising all their rights and obligations under the transaction documents. This document cannot be reproduced, except in full, without prior written approval of the Company. Any unauthorized alteration, forgery or falsification of the content or appearance of this document is unlawful and offenders may be prosecuted to the fullest extent of the law. Unless otherwise stated the results shown in this test report refer only to the sample(s) tested.

### Analytical flow chart of Heavy Metal

These samples were dissolved totally by pre-conditioning method according to below flow chart.

【Reference method : US EPA 3051 \ US EPA 3052】



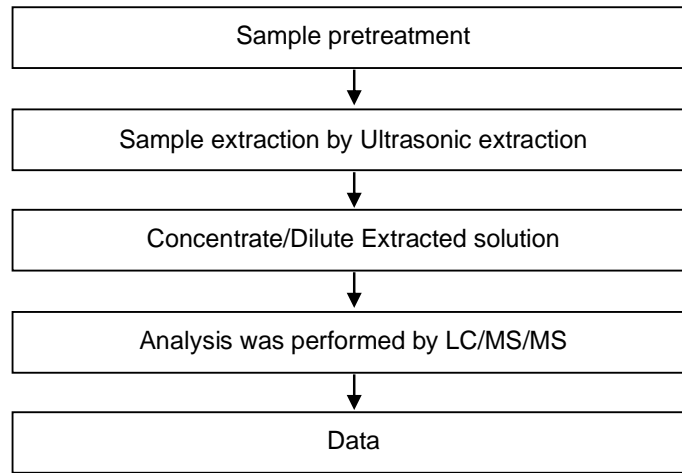
\* US EPA 3051 method does not add HF.

This document is issued by the Company subject to its General Conditions of Service printed overleaf, available on request or accessible at <https://www.sgs.com.tw/terms-of-service> and, for electronic format documents, subject to Terms and Conditions for Electronic Documents at <https://www.sgs.com.tw/terms-of-service>. Attention is drawn to the limitation of liability, indemnification and jurisdiction issues defined therein. Any holder of this document is advised that information contained hereon reflects the Company's findings at the time of its intervention only and within the limits of client's instruction, if any. The Company's sole responsibility is to its Client and this document does not exonerate parties to a transaction from exercising all their rights and obligations under the transaction documents. This document cannot be reproduced, except in full, without prior written approval of the Company. Any unauthorized alteration, forgery or falsification of the content or appearance of this document is unlawful and offenders may be prosecuted to the fullest extent of the law. Unless otherwise stated the results shown in this test report refer only to the sample(s) tested.

FORMOSA PLASTICS CORPORATION

NO. 1-1, SHIH-WHA 1ST RD., LIN-YUAN DISTRICT, KAOHSIUNG CITY 832, TAIWAN (R. O. C.)

### Analytical flow chart - PFOA/PFOS

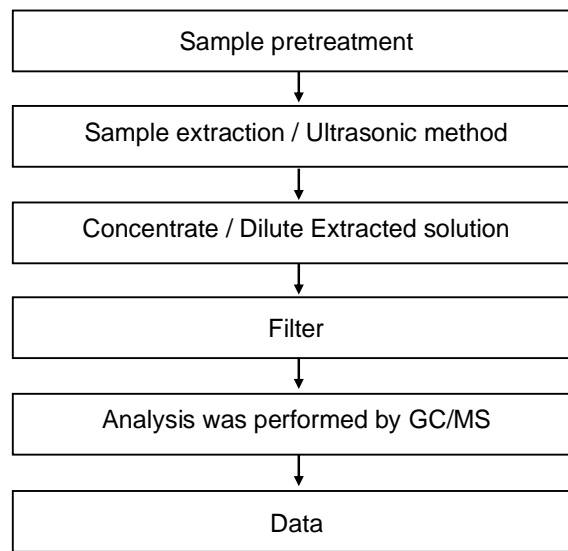


This document is issued by the Company subject to its General Conditions of Service printed overleaf, available on request or accessible at <https://www.sgs.com.tw/terms-of-service> and, for electronic format documents, subject to Terms and Conditions for Electronic Documents at <https://www.sgs.com.tw/terms-of-service>. Attention is drawn to the limitation of liability, indemnification and jurisdiction issues defined therein. Any holder of this document is advised that information contained hereon reflects the Company's findings at the time of its intervention only and within the limits of client's instruction, if any. The Company's sole responsibility is to its Client and this document does not exonerate parties to a transaction from exercising all their rights and obligations under the transaction documents. This document cannot be reproduced, except in full, without prior written approval of the Company. Any unauthorized alteration, forgery or falsification of the content or appearance of this document is unlawful and offenders may be prosecuted to the fullest extent of the law. Unless otherwise stated the results shown in this test report refer only to the sample(s) tested.

FORMOSA PLASTICS CORPORATION

NO. 1-1, SHIH-WHA 1ST RD., LIN-YUAN DISTRICT, KAOHSIUNG CITY 832, TAIWAN (R. O. C.)

### Analytical flow chart - HBCDD / Organic phosphorus compounds



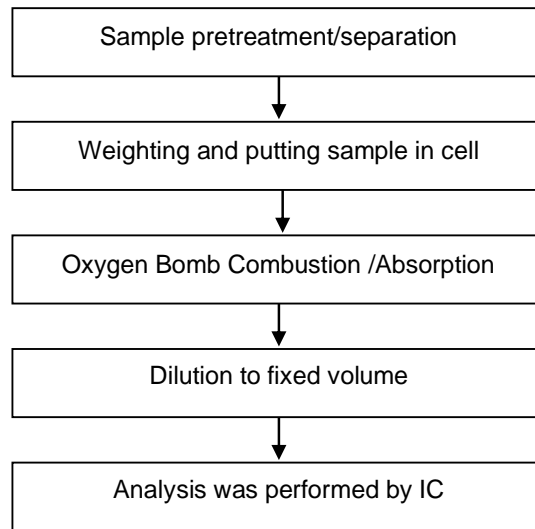
This document is issued by the Company subject to its General Conditions of Service printed overleaf, available on request or accessible at <https://www.sgs.com.tw/terms-of-service> and, for electronic format documents, subject to Terms and Conditions for Electronic Documents at <https://www.sgs.com.tw/terms-of-service>. Attention is drawn to the limitation of liability, indemnification and jurisdiction issues defined therein. Any holder of this document is advised that information contained hereon reflects the Company's findings at the time of its intervention only and within the limits of client's instruction, if any. The Company's sole responsibility is to its Client and this document does not exonerate parties to a transaction from exercising all their rights and obligations under the transaction documents. This document cannot be reproduced, except in full, without prior written approval of the Company. Any unauthorized alteration, forgery or falsification of the content or appearance of this document is unlawful and offenders may be prosecuted to the fullest extent of the law. Unless otherwise stated the results shown in this test report refer only to the sample(s) tested.



FORMOSA PLASTICS CORPORATION

NO. 1-1, SHIH-WHA 1ST RD., LIN-YUAN DISTRICT, KAOHSIUNG CITY 832, TAIWAN (R. O. C.)

### Analytical flow chart of Halogen



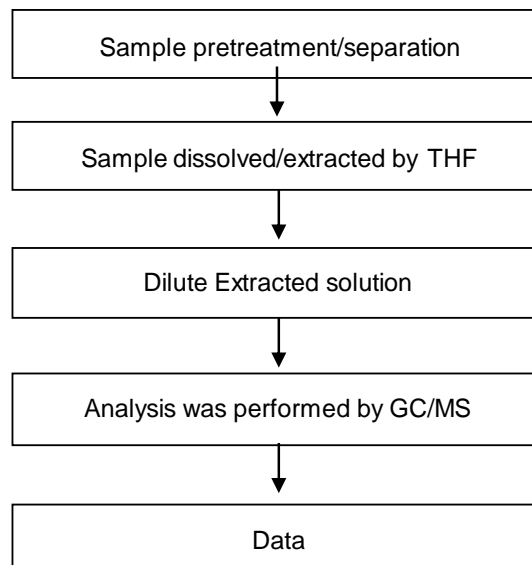
This document is issued by the Company subject to its General Conditions of Service printed overleaf, available on request or accessible at <https://www.sgs.com.tw/terms-of-service> and, for electronic format documents, subject to Terms and Conditions for Electronic Documents at <https://www.sgs.com.tw/terms-of-service>. Attention is drawn to the limitation of liability, indemnification and jurisdiction issues defined therein. Any holder of this document is advised that information contained hereon reflects the Company's findings at the time of its intervention only and within the limits of client's instruction, if any. The Company's sole responsibility is to its Client and this document does not exonerate parties to a transaction from exercising all their rights and obligations under the transaction documents. This document cannot be reproduced, except in full, without prior written approval of the Company. Any unauthorized alteration, forgery or falsification of the content or appearance of this document is unlawful and offenders may be prosecuted to the fullest extent of the law. Unless otherwise stated the results shown in this test report refer only to the sample(s) tested.

FORMOSA PLASTICS CORPORATION

NO. 1-1, SHIH-WHA 1ST RD., LIN-YUAN DISTRICT, KAOHSIUNG CITY 832, TAIWAN (R. O. C.)

### Analytical flow chart of phthalate content

【Test method: IEC 62321-8】

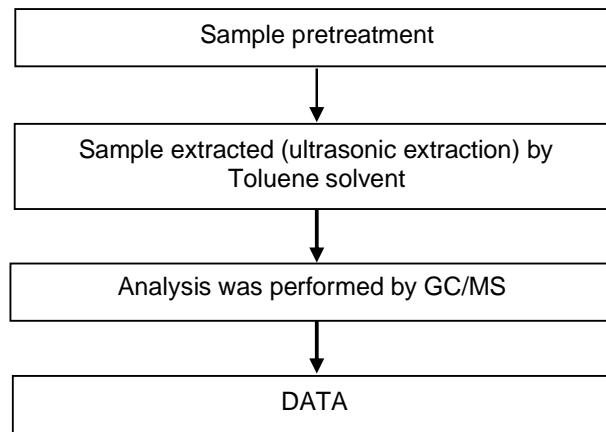


This document is issued by the Company subject to its General Conditions of Service printed overleaf, available on request or accessible at <https://www.sgs.com.tw/terms-of-service> and, for electronic format documents, subject to Terms and Conditions for Electronic Documents at <https://www.sgs.com.tw/terms-of-service>. Attention is drawn to the limitation of liability, indemnification and jurisdiction issues defined therein. Any holder of this document is advised that information contained hereon reflects the Company's findings at the time of its intervention only and within the limits of client's instruction, if any. The Company's sole responsibility is to its Client and this document does not exonerate parties to a transaction from exercising all their rights and obligations under the transaction documents. This document cannot be reproduced, except in full, without prior written approval of the Company. Any unauthorized alteration, forgery or falsification of the content or appearance of this document is unlawful and offenders may be prosecuted to the fullest extent of the law. Unless otherwise stated the results shown in this test report refer only to the sample(s) tested.

FORMOSA PLASTICS CORPORATION

NO. 1-1, SHIH-WHA 1ST RD., LIN-YUAN DISTRICT, KAOHSIUNG CITY 832, TAIWAN (R. O. C.)

### PAHs (PolyAromaticHydrocarbons) analytical flow chart

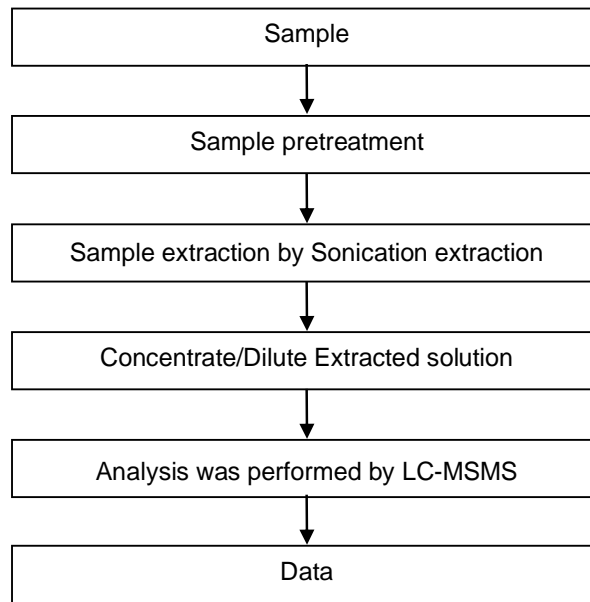


This document is issued by the Company subject to its General Conditions of Service printed overleaf, available on request or accessible at <https://www.sgs.com.tw/terms-of-service> and, for electronic format documents, subject to Terms and Conditions for Electronic Documents at <https://www.sgs.com.tw/terms-of-service>. Attention is drawn to the limitation of liability, indemnification and jurisdiction issues defined therein. Any holder of this document is advised that information contained hereon reflects the Company's findings at the time of its intervention only and within the limits of client's instruction, if any. The Company's sole responsibility is to its Client and this document does not exonerate parties to a transaction from exercising all their rights and obligations under the transaction documents. This document cannot be reproduced, except in full, without prior written approval of the Company. Any unauthorized alteration, forgery or falsification of the content or appearance of this document is unlawful and offenders may be prosecuted to the fullest extent of the law. Unless otherwise stated the results shown in this test report refer only to the sample(s) tested.

FORMOSA PLASTICS CORPORATION

NO. 1-1, SHIH-WHA 1ST RD., LIN-YUAN DISTRICT, KAOHSIUNG CITY 832, TAIWAN (R. O. C.)

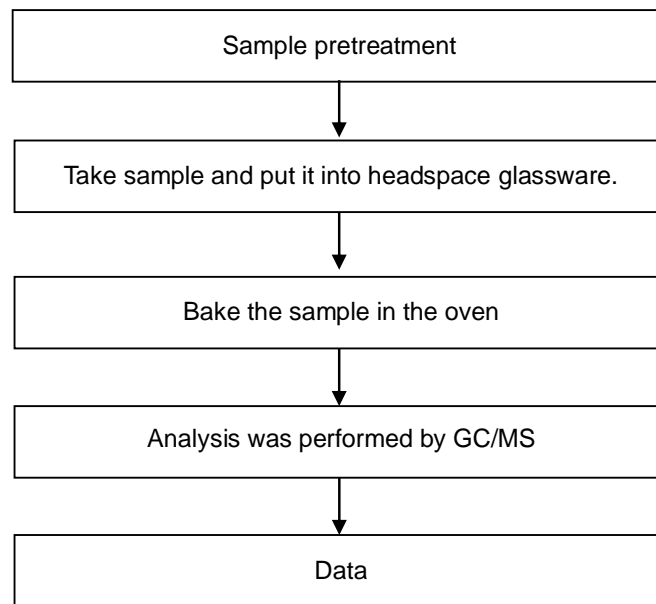
### BPA analytical FLOW CHART



This document is issued by the Company subject to its General Conditions of Service printed overleaf, available on request or accessible at <https://www.sgs.com.tw/terms-of-service> and, for electronic format documents, subject to Terms and Conditions for Electronic Documents at <https://www.sgs.com.tw/terms-of-service>. Attention is drawn to the limitation of liability, indemnification and jurisdiction issues defined therein. Any holder of this document is advised that information contained hereon reflects the Company's findings at the time of its intervention only and within the limits of client's instruction, if any. The Company's sole responsibility is to its Client and this document does not exonerate parties to a transaction from exercising all their rights and obligations under the transaction documents. This document cannot be reproduced, except in full, without prior written approval of the Company. Any unauthorized alteration, forgery or falsification of the content or appearance of this document is unlawful and offenders may be prosecuted to the fullest extent of the law. Unless otherwise stated the results shown in this test report refer only to the sample(s) tested.

## Analytical flow chart of volatile organic compounds (VOCs)

【Reference method : US EPA 5021A】



This document is issued by the Company subject to its General Conditions of Service printed overleaf, available on request or accessible at <https://www.sgs.com.tw/terms-of-service> and, for electronic format documents, subject to Terms and Conditions for Electronic Documents at <https://www.sgs.com.tw/terms-of-service>. Attention is drawn to the limitation of liability, indemnification and jurisdiction issues defined therein. Any holder of this document is advised that information contained hereon reflects the Company's findings at the time of its intervention only and within the limits of client's instruction, if any. The Company's sole responsibility is to its Client and this document does not exonerate parties to a transaction from exercising all their rights and obligations under the transaction documents. This document cannot be reproduced, except in full, without prior written approval of the Company. Any unauthorized alteration, forgery or falsification of the content or appearance of this document is unlawful and offenders may be prosecuted to the fullest extent of the law. Unless otherwise stated the results shown in this test report refer only to the sample(s) tested.

## Test Report

No.: EKR20C01802

Date: 11-Jan-2021

Page: 30 of 30

FORMOSA PLASTICS CORPORATION

NO. 1-1, SHIH-WHA 1ST RD., LIN-YUAN DISTRICT, KAOHSIUNG CITY 832, TAIWAN (R. O. C.)

\* The tested sample / part is marked by an arrow if it's shown on the photo. \*

### EKR20C01802



\*\* End of Report \*\*

This document is issued by the Company subject to its General Conditions of Service printed overleaf, available on request or accessible at <https://www.sgs.com.tw/terms-of-service> and, for electronic format documents, subject to Terms and Conditions for Electronic Documents at <https://www.sgs.com.tw/terms-of-service>. Attention is drawn to the limitation of liability, indemnification and jurisdiction issues defined therein. Any holder of this document is advised that information contained hereon reflects the Company's findings at the time of its intervention only and within the limits of client's instruction, if any. The Company's sole responsibility is to its Client and this document does not exonerate parties to a transaction from exercising all their rights and obligations under the transaction documents. This document cannot be reproduced, except in full, without prior written approval of the Company. Any unauthorized alteration, forgery or falsification of the content or appearance of this document is unlawful and offenders may be prosecuted to the fullest extent of the law. Unless otherwise stated the results shown in this test report refer only to the sample(s) tested.